

the blue experience  
2025 / 2026



Innovative Protective Packaging ...



Welcome to Emba-Protec!

The family-run company was founded in 2003 and after 20 years can look back on an impressive growth. As the market leader in Europe for protective packaging, we work exclusively with packaging solutions for sensitive or logistically demanding shipment products of our customers.

As your partner we produce and deliver bespoke protective packaging specially designed for your delicate products. In our headquarters in east-westphalian Bad Oeynhausen, we combine R&D, production and logistics under one roof. With modern machines, a lean administration and a highly qualified team, we deliver bespoke packaging solutions tailormade for your needs.

Our standard range, comprising more than 500 sizes, is the **market's largest**. You have the choice of film qualities PE and PU and an antistatic version. This standard product range is available from stock – even in small quantities.

Although you can cover a lot with this, we can also design your own bespoke packaging. Whether for small or large quantities. **Over 1,000 new developments per year** are realized by our R&D team using the latest CAD systems. Together with you, not only are all possible storage and transportation conditions of your product taken into consideration, but also the entire work process. And upon request, drop tests in accordance with the UPS standard (DIN ISO 2248) or G-value tests can also be carried out by our R&D team.



Once the design of your packaging has been created and approved by you, there are two options available. An industrial plotter is now available for trial or one-off orders of up to 1,000 units. Without tooling costs and in the shortest possible time we can deliver your packaging. Or you can order your desired quantity as with our new in-house 28-meter high-performance die-cutter, we can also produce very large runs.

With more than 16.000 square meters of storage and production space and a modern high-bay warehouse with more than 10.000 spaces, we guarantee a just-in-time delivery of your packaging. When you place a contract order, no matter whether the item is a standard size or a packaging specially designed for you, we produce higher volumes, pass-on the price advantage to you and arrange for storage. Up to this point, we bear the cost and you only pay when your packaging leaves our premises. You just have to order call-off quantities and we deliver from stock directly to your production site, always conforming with your changing processes and requirements. This is our understanding of customer service.

We live environmental protection and sustainability. We use **FSC certified cardboard**, save on energy by using modern machines and the latest building techniques, and all of our products are 100% recyclable. After usage, our packaging can be disposed of unseparated into the general waste paper system.

We produce your protective packaging using the latest state of the art technology, in the best quality and to the highest environmental standards. This is proven by our certified quality and environmental systems, according to **ISO 9001** and **ISO 14001**. This is what our good name stands for.

Yours sincerely



Bernhard Müller  
(Sales Director)

Zertifiziertes Qualitätsmanagement System /  
Certified quality management system  
ISO 9001: 2015  
Umweltmanagement nach /  
Environmental management  
ISO 14001: 2015

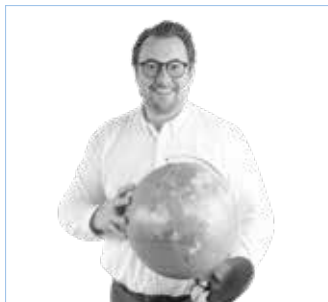


# Our International Sales Team

We have a good reputation in consulting.

## Sales Director

### Jan-Hendrik Hagelmann



#### Sales Director International

Phone: +49 (0) 57 31 - 30 888 - 14  
Mobile: +49 (0) 172 - 2 73 11 11  
E-Mail: jh@emba-protec.de

## Sales Team International

### Agnieszka Szurman



#### Country Manager Eastern Europe

Mobile: +48 (0) 605 538 995  
E-Mail: asz@emba-protec.com

### Jakub Kryński



#### Sales Manager Poland

Mobile: +48 603 564 304  
E-Mail: jk@emba-protec.com

### Mihai Dragos Cismoc

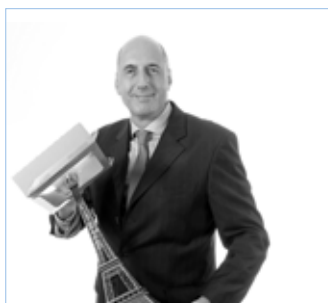


#### Sales Manager Czech Republic

Mobile: +42 777 949 078  
E-Mail: mc@emba-protec.com

## Sales Team International

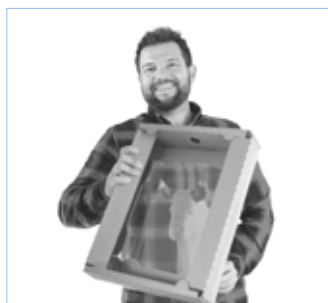
### Bertrand Lavaud



#### Sales Manager France

Mobile: +33 (0) 7 66 55 00 94  
E-Mail: bl@emba-protec.com

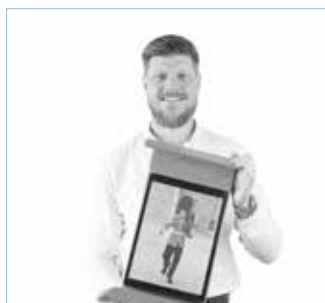
### Raúl Rodríguez



#### Sales Manager Spain

Mobile: +34 641 388 669  
E-Mail: rr@emba-protec.com

### Aaron Swinford



#### Sales Manager UK / Ireland

Mobile: +44 (0) 7359 380107  
E-Mail: aaron@emba-protec.com

## Emba-TrayTec® / Emba-Buzz n'Pack®

### Ulf Helbich



#### Project Management

Phone: +49 (0) 57 31 - 30 888 - 36  
Mobile: +49 (0) 1 74 - 2 62 09 49  
E-Mail: uh@emba-protec.de

### Marc Hackbarth



#### Sales Coordination

Phone: +49 (0) 57 31 - 30 888 - 34  
E-Mail: mha@emba-protec.de



# Our International Sales Team

And people who stand for it.

## Sales Director

### Bernhard Müller



#### Sales Director

Phone: +49 (0) 57 31 - 30 888 - 13  
Mobile: +49 (0) 1 72 - 1 57 20 19  
E-Mail: bm@emba-protec.de

## Sales Team National

### Oliver Marchel



#### Area management

Zip 20-25, 27, 29, 30-31, 37-38  
Mobile: +49 (0) 1 72 - 7 22 82 02  
E-Mail: om@emba-protec.de

### Sven Walter



#### Area management

Zip 26, 28, 32-36, 48-49, 57-59  
Mobile: +49 (0) 1 72 - 7 20 32 91  
E-Mail: sw@emba-protec.de

### Joshua Bauder



#### Area management

Zip 01-19, 39, 98-99  
Mobile: +49 (0) 1 72 - 7 20 31 23  
E-Mail: jba@emba-protec.de

## Sales Team National

### Joachim Blanke



#### Area management

Zip 40-47, 50-54, 56  
Mobile: +49 (0) 1 72 - 2 32 82 02  
E-Mail: jbl@emba-protec.de

### Christian Fretz



#### Area management

Zip 55, 60-69, 70-71, 73-77  
Mobile: +49 (0) 1 72 - 7 20 32 66  
E-Mail: cfr@emba-protec.de

### Ben Frankowski



#### Area management

Zip 66-69, 70-71, 73-77, 79  
Mobile: +49 (0) 1 72 - 6000 911  
E-Mail: bfr@emba-protec.de

## Sales Team National/DACH

### Bernd Salzwedel



#### Area management

Zip 72, 78-79, 87-89, Switzerland,  
Liechtenstein, Austria West  
Mobile: +49 (0) 1 72 - 9 72 03 22  
E-Mail: bs@emba-protec.de

### Jürgen Schaible



#### Area management

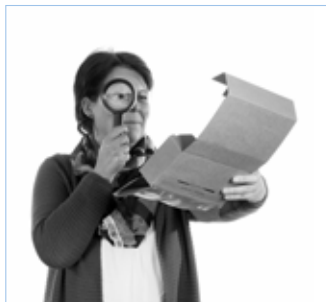
Zip 80 - 86, 90 - 97  
Austria East  
Mobile: +49 (0) 1 72 - 7 22 82 03  
E-Mail: jsc@emba-protec.de

# Our Team

Your expectations are a vital part of our work.

## Quality Assurance

### Angela Scholz



**Operations management,  
Quality assurance**  
Phone: +49 (0) 57 31 - 30 888 - 55  
E-Mail: as@emba-protec.de

## Purchasing

### Silke Kusch



**Purchasing Management**  
Phone: +49 (0) 57 31 - 30 888 - 62  
E-Mail: sk@emba-protec.de

### Michael Trunk



**Purchasing**  
Phone: 0 57 31 - 30 888 - 64  
E-Mail: mt@emba-protec.de

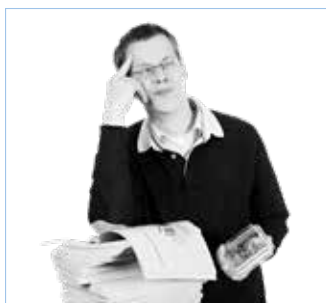
### Nadine Gresförder



**Purchasing**  
Phone: +49 (0) 57 31 - 30 888 - 31  
E-Mail: ng@emba-protec.de

## Media | IT

### Dirk Hundertmark



**Media | IT**  
Phone: +49 (0) 57 31 - 30 888 - 88  
E-Mail: dh@emba-protec.de

## Sales Service

### Lina Schröder



**Customer Support**  
ZIP 26, 28, 32-36, 40-47, 48-49, 50-54, 56, 57-59, 72, 78-79, 87-89  
Phone: +49 (0) 57 31 - 30 888 - 39  
E-Mail: ls@emba-protec.de

### Viktor Frick



**Customer Support**  
ZIP 20-25, 27, 29, 30-31, 37-38, 55, 60-69, 70-71, 73-77  
Phone: +49 (0) 57 31 - 30 888 - 37  
E-Mail: vf@emba-protec.de

### Jennifer Eichmann



**Customer Support**  
ZIP 80-86, 90-97, Austria East, Austria West & Switzerland / Liechtenstein  
Phone: 0 57 31 - 30 888 - 33  
E-Mail: je@emba-protec.de

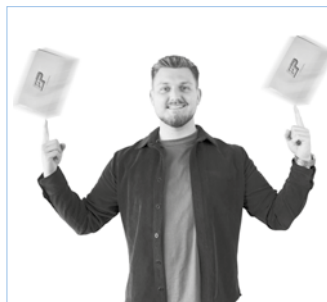
## Sales Service

### Maïke Seyfarth



**Customer Support**  
France, Poland, Czech Republic, Hungary, Romania, Bulgaria, Slovakia, Spain, Portugal  
Phone: 0 57 31 - 30 888 - 33  
E-Mail: ms@emba-protec.de

### Lukas Kobus



**Customer Support**  
ZIP 01-19, 39, 98-99  
Phone: 0 57 31 - 30 888 - 38  
E-Mail: lk@emba-protec.de

### Berit Sager



**Customer Support**  
Benelux, Great Britain, Ireland, Scandinavia, Southern Europe, China, India, USA, Australia, Italy  
Phone: 0 57 31 - 30 888 - 45  
E-Mail: bsa@emba-protec.de

### Development

#### Adam Grimann



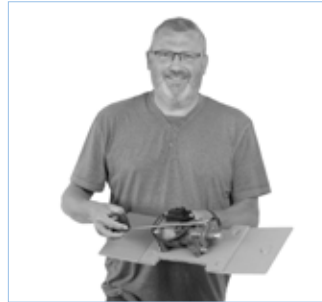
**Research & Development**  
Phone: +49 (0) 57 31 - 30 888 - 53  
E-Mail: ag@emba-protec.de

#### Silke Menzel



**Research & Development**  
Phone: +49 (0) 57 31 - 30 888 - 52  
E-Mail: sme@emba-protec.de

#### Ingo Keil



**Research & Development**  
Phone: +49 (0) 57 31 - 30 888 - 54  
E-Mail: ik@emba-protec.de

#### Dirk Baumann



**Production planning,  
QM UM representative**  
Phone: +49 (0) 57 31 - 30 888 - 61  
E-Mail: db@emba-protec.de

### Logistics

#### Daniel Kusch



**Head of Logistics**  
Phone: +49 (0) 57 31 - 30 888 - 72  
E-Mail: dku@emba-protec.de

#### Marcus Edler



**Storage Management**  
Phone: +49 (0) 57 31 - 30 888 - 74  
E-Mail: me@emba-protec.de

#### Omid Ammo



**Logistics**  
Phone: 0 57 31 - 30 888 - 73  
E-Mail: oa@emba-protec.de

### Reception

#### Christina Frankowski



**Reception**  
Phone: +49 (0) 57 31 - 30 888 - 0  
E-Mail: info@emba-protec.de

### Accounting

#### Melanie Wiek



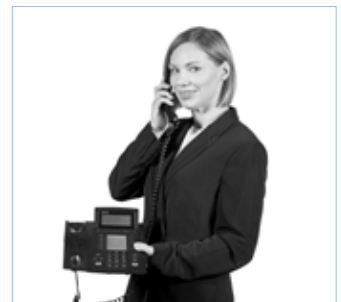
**Accounts Receivable Department**  
Phone: +49 (0) 57 31 - 30 888 - 15  
E-Mail: mw@emba-protec.de

#### Laura Wiek



**Accounts Receivable Department**  
Phone: +49 (0) 57 31 - 30 888 - 16  
E-Mail: lw@emba-protec.de

#### Maria Kliwer



**Accounts Receivable Department**  
Phone: +49 (0) 57 31 - 30 888 - 17  
E-Mail: mkl@emba-protec.de

Buzz n' Pack<sup>®</sup>

The Decentralized Packaging Solution





# WORLD FIRST

We present a revolutionary  
new packaging technology.

You can find more about  
this on pages 132 - 136.

# Table of Contents

## Packaging Systems

### Emba-Flex® - The Retention Packaging

Page 12 - 34



The special stretch mechanism of Emba Flex® ensures that the stretch film fixes the product firmly to the corrugated cardboard format, so avoiding any slipping. The highly flexible but practically tear-free stretch film clings perfectly to the different product contours.

In addition to the insert we also offer the matching shipping box.

### Emba-Flex CLEANLINE® - The Plastic Retention Packaging

Page 36 - 43



To meet the highest requirements, we have developed a new product line based on our proven and successful packaging system Emba-Flex® (retention packaging). The idea was to offer a perfect solution for e.g. dental technology applications, precision engineering applications and chip technology applications, where dust-free packaging systems are necessary. To a large extent, the use of plastic packaging material minimises the amount of fine particles usually present when using corrugated board packaging.

### Emba-Quick® - The One-Piece-Retention Packaging

Page 46 - 59



Based on our proven and successful packaging systems Emba-Flex® we offer an even faster packaging solution. The transport box is already attached. This saves time and storage space.

### Emba-Quick SK® - The Suspension Packaging with self-adhesive closure

Page 60 - 71



Packaging doesn't get any faster than this.  
All in one: fusible packaging, outer carton and sealing material.

### Emba-Swing® - The Suspension Packaging

Page 72 - 86



The highly flexible but practically tear-free stretch film of the Emba-Swing® solution clings perfectly to the different product contours. Clamping between two suspension cushions means that the product will be stored as if it was "floating on air" during transport. Even if the box is dropped on its side walls also the heaviest products will remain in position.

The transport box is part of the set.



# Table of Contents

## Packaging Systems

### Emba-One® - The best from 2 systems combined !

Page 88 - 93

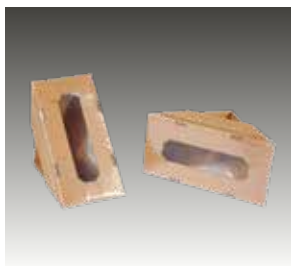


This flexible systems is compact and holds your product firmly in position during transit. With this process, Emba One® combines the good properties of product cushioning and product fixing.

Emba One® can individually adapt to even the most varied product contours. Due to the „suspended delivery“, there is a very high degree of protection against shocks and vibrations.

### Special Packaging - The solution for “special” projects

Page 98 - 117

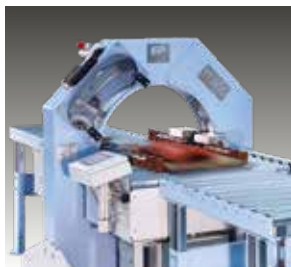


Our special packaging for screens is based on the suspension packaging Emba-Swing®. The corner suspension cushions can accommodate different display formats ranging from 32 to 60 inches. This version is especially useful in cases where a stand is pre-installed.

For laptops and netbooks we offer ideal standard packaging for sizes from 12” to 17” with optional accessory compartments.

### Emba-TrayTec® - The automatic packaging solution

Page 118 - 127



This tray packaging machine ensures perfect product protection, high-speed packaging and low costs. This easy-to-operate machine offers maximum flexibility for constantly changing packing units with different heights and a weight of up to 160 kg.

**New: Emba-TrayTec® Plus! Cushioning and retention in one.**

### Emba-Buzz n' Pack® - Packing on command

Page 132 - 136



The Decentralized Packaging Solution  
Up to 4 packaging cycles per minute !

### Shipping boxes - The wide world of outer cartons

Page 138 - 139



The use of extra strong corrugated board ensure highest safety also for shipping via postal service. Transport boxes with crash-lock base mean time savings of up to 80 % compared to traditional boxes. Due to high production volumes the best price is guaranteed.



Retention Packaging  
Protection  
fast handling  
reduction process costs  
environment-friendly  
reusable  
highly flexible

Emba-flex®

light and flat products up to 4 kg  
for most unusual product contours  
reducing amount of packaging



# Emba-flex<sup>®</sup>

## The Retention Packaging



**Application:**

Light and flat products of up to 4.0 kg (normally), requiring medium level protection

**Features:**

The packaging will adapt to even the most unusual product contours

**Advantages:**

The amount of packaging types is substantially reduced

## The Retention Packaging

### Emba-Flex® - The retention packaging

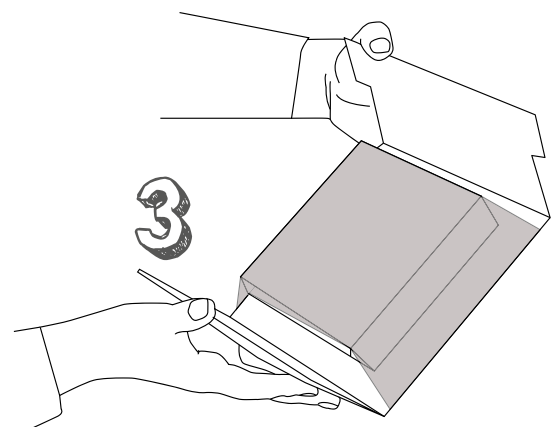
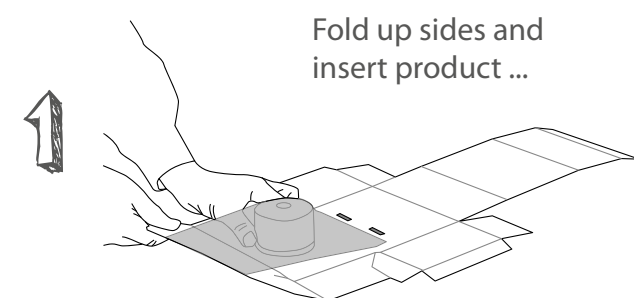
- high-level protection for the most varied products and contours
- reduction of packaging diversity by up to 90%
- transport boxes with crash-lock base guarantee fast handling
- quick fastening avoids box gluing
- reduction of process costs (procurement, storing, shipment)
- environment-friendly, can be disposed of with waste paper
- reusable (e.g. for repair services)
- professional appearance
- economical due to standard program (no tool costs)



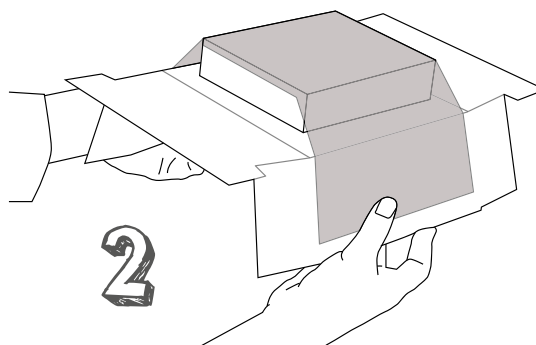
### The method

The special stretch mechanism ensures that the film fixes the product firmly to the corrugated cardboard format, so avoiding any slipping. The highly flexible but practically tear-free stretch film clings perfectly to the different product contours. This reduces your packaging diversity by up to 90%.

The special film is highly flexible and has unprecedented shrink behaviour after stretching. Even when stretched to an enormous extent the film almost returns back into it's original shape without a decrease in retention force.



fold down both sides completely  
--> foil stretched ...





## The Retention Packaging

### Application examples

Emba-Flex® adapts optimally to the most varied product contours like a second skin. New products from your range can often be packed immediately with existing packaging sizes. Also products of different sizes fit into the same-sized packaging solution.

Also product accessories are packed professionally and securely in accessory compartments or hollow bottom. Whether it's a manual, cables or remote controls, everything is securely fixed in position.

In addition to our immediate delivery program listed in the table below we also offer existing special packaging as well as new developments according to your individual needs.



### The immediate delivery program

Maximum product size	Article code	Max. product weight	Page	Maximum product size	Article code	Max. product weight	Page
100 x 100 x 40 mm	FL 101004	ca. 0,5 kg	18	290 x 260 x 60 mm	FL 292606	ca. 2,5 kg	26
120 x 80 x 40 mm	FL 120804	ca. 0,5 kg	18	300 x 90 x 50 mm	FL 300905	ca. 0,8 kg	27
120 x 90 x 50 mm	FL 120905	ca. 0,8 kg	18	300 x 200 x 70 mm	FL 302007	ca. 2,5 kg	27
140 x 80 x 40 mm	FL 140804	ca. 0,5 kg	19	300 x 200 x 100 mm	FL 302010	ca. 2,5 kg	27
140 x 100 x 40 mm	FL 141004	ca. 1,0 kg	19	300 x 220 x 140 mm	FL 302214	ca. 2,5 kg	28
150 x 150 x 40 mm	FL 151504	ca. 1,5 kg	19	300 x 300 x 80 mm	FL 303008	ca. 3,0 kg	28
150 x 150 x 60 mm	FL 151506	ca. 1,5 kg	20	310 x 210 x 40 mm	FL 312104	ca. 2,5 kg	28
160 x 100 x 20 mm	FL 161002	ca. 0,5 kg	20	310 x 220 x 40 mm	FL 312204	ca. 3,0 kg	29
160 x 120 x 40 mm	FL 161204	ca. 0,5 kg	20	340 x 200 x 120 mm	FL 342012	ca. 2,0 kg	29
160 x 120 x 50 mm	FL 161205	ca. 0,5 kg	21	340 x 250 x 50 mm	FL 342505	ca. 3,5 kg	29
160 x 120 x 100 mm	FL 161210	ca. 1,5 kg	21	350 x 200 x 80 mm	FL 352008	ca. 2,0 kg	30
180 x 90 x 60 mm	FL 180906	ca. 0,8 kg	21	350 x 250 x 40 mm	FL 352504	ca. 2,0 kg	30
180 x 100 x 40 mm	FL 181004	ca. 1,0 kg	22	360 x 240 x 100 mm	FL 362410	ca. 2,5 kg	30
180 x 100 x 60 mm	FL 181006	ca. 1,0 kg	22	360 x 260 x 40 mm	FL 362604	ca. 3,0 kg	31
190 x 160 x 60 mm	FL 191606	ca. 1,0 kg	22	380 x 250 x 80 mm	FL 382508	ca. 3,0 kg	31
200 x 200 x 60 mm	FL 202006	ca. 1,5 kg	23	400 x 200 x 100 mm	FL 402010	ca. 3,0 kg	31
200 x 200 x 80 mm	FL 202008	ca. 1,5 kg	23	400 x 250 x 100 mm	FL 402510	ca. 3,5 kg	32
220 x 150 x 60 mm	FL 221506	ca. 1,5 kg	23	400 x 300 x 50 mm	FL 403005	ca. 4,5 kg	32
220 x 150 x 80 mm	FL 221508	ca. 1,5 kg	24	400 x 300 x 60 mm	FL 403006	ca. 2,5 kg	32
230 x 150 x 20 mm	FL 231502	ca. 1,0 kg	24	400 x 320 x 110 mm	FL 403211	ca. 5,0 kg	33
230 x 180 x 60 mm	FL 231806	ca. 1,5 kg	24	470 x 300 x 50 mm	FL 473005	ca. 4,5 kg	33
240 x 100 x 40 mm	FL 241004	ca. 1,5 kg	25	500 x 320 x 150 mm	FL 503215	ca. 5,0 kg	33
250 x 250 x 60 mm	FL 252506	ca. 2,0 kg	25	500 x 400 x 100 mm	FL 504010	ca. 5,0 kg	34
250 x 250 x 80 mm	FL 252508	ca. 2,0 kg	25	510 x 230 x 50 mm	FL 512305	ca. 2,5 kg	34
280 x 160 x 70 mm	FL 281607	ca. 2,0 kg	26	510 x 300 x 50 mm	FL 513005	ca. 2,5 kg	34
280 x 180 x 120 mm	FL 281812	ca. 2,5 kg	26				

Available in sets of 50 and more (1 insert, 1 box). Special sizes on request.

## The Retention Packaging



Maximum product size: **100 x 100 x 40 mm**

### Product data

Overall transport box dimensions 145 x 120 x 67 mm  
Fefco 0713 with crash-lock base and closing lid  
Quality E 1.20  
Scope of delivery = Fixing insert 1 unit,  
Transport box 1 unit

Article code	Version
<b>FL 101004 S</b>	NORMLine 50, PU film 50 microns
<b>FL 101004 ESDS</b>	ESDLine 50, PU film ESD 50 microns
<b>FL 101004 EC6S</b>	ECOLine 50, PE film 50 microns

Applications: sensors, switches, miniature devices, rotary encoder  
Max. product weight: up to 500 gr.



Maximum product size: **120 x 80 x 40 mm**

### Product data

Overall transport box dimensions  
210 x 170 x 97 mm  
Fefco 0713 with crash-lock base and  
closing lid, Quality E 1.40  
Scope of delivery = Fixing insert 1 unit,  
Transport box 1 unit

**with accessory  
compartment**

Article-code	Version
<b>FL 120804 S</b>	NORMLine 50, PU film 50 microns
<b>FL 120804 ESDS</b>	ESDLine 50, PU film ESD 50 microns
<b>FL 120804 EC4S</b>	ECOLine 40, PE film 40 microns

Einsatzbereich: Handys, miniature devices  
Max. product weight: up to 500 gr.



Maximum product size: **120 x 90 x 50 mm**

### Product data

Overall transport box dimensions 158 x 132 x 82 mm  
Fefco 0713 with crash-lock base and closing lid  
Quality B 1.30  
Scope of delivery = Fixing insert 1 unit,  
Transport box 1 unit

Article code	Version
<b>FL 120905 S</b>	NORMLine 50, PU film 50 microns
<b>FL 120905 ESDS</b>	ESDLine 50, PU film ESD 50 microns
<b>FL 120905 EC6S</b>	ECOLine 50, PE film 50 microns

Applications: sensors, displays, miniature devices, rotary encoder  
Max. product weight: up to 800 gr.

The indicated max. weights are approximate values and can vary depending on the product to be shipped.

## The Retention Packaging



FL 140804

Maximum product size: **140 x 80 x 40 mm**

### Product data

Overall transport box dimensions 170 x 116 x 67 mm  
Fefco 0713 with crash-lock base and closing lid  
Quality E 1.20  
Scope of delivery = Fixing insert 1 unit,  
Transport box 1 unit

Article code	Version
<b>FL 140804 S</b>	NORMLine 50, PU film 50 microns
<b>FL 140804 ESDS</b>	ESDLine 50, PU film ESD 50 microns
<b>FL 140804 EC6S</b>	ECOLine 50, PE film 50 microns
<b>Transport box alternatively</b> available with quality B.130!	

Applications: mobile phones, displays, switches  
Max. product weight: up to 500 gr.



FL 141004

Maximum product size: **140 x 100 x 40 mm**

### Product data

Overall transport box dimensions 176 x 176 x 84 mm  
Fefco 0713 with crash-lock base and closing lid  
Quality B 1.30  
Scope of delivery = Fixing insert 1 unit,  
Transport box 1 unit

Article code	Version
<b>FL 141004 S</b>	NORMLine 50, PU film 50 microns
<b>FL 141004 ESDS</b>	ESDLine 50, PU film ESD 50 microns
<b>FL 141004 EC6S</b>	ECOLine 50, PE film 50 microns

Applications: sensors, switches, miniature devices, displays  
Max. product weight: up to 1000 gr.



FL 151504

Maximum product size: **150 x 150 x 40 mm**

### Product data

Overall transport box dimensions 199 x 183 x 86 mm  
Fefco 0713 with crash-lock base and closing lid  
Quality B 1.30  
Scope of delivery = Fixing insert 1 unit,  
Transport box 1 unit

Article code	Version
<b>FL 151504 S</b>	NORMLine 50, PU film 50 microns
<b>FL 151504 ESDS</b>	ESDLine 50, PU film ESD 50 microns
<b>FL 151504 EC6S</b>	ECOLine 50, PE film 50 microns
<b>FL 151504 MS</b>	MAXILine 100, PU film 100 microns

Applications: displays, miniature devices, instruments  
Max. product weight: up to 1500 gr.

The indicated max. weights are approximate values and can vary depending on the product to be shipped.

## The Retention Packaging



Maximum product size: **150 x 150 x 60 mm**

### Product data

Overall transport box dimensions 199 x 183 x 109 mm  
Fefco 0713 with crash-lock base and closing lid  
Quality B 1.30  
Scope of delivery = Fixing insert 1 unit,  
Transport box 1 unit

Article code	Version
<b>FL 151506 S</b>	NORMLine 50, PU film 50 microns
<b>FL 151506 ESDS</b>	ESDLine 50, PU film ESD 50 microns
<b>FL 151506 EC6S</b>	ECOLine 50, PE film 50 microns
<b>FL 151506 MS</b>	MAXILine 100, PU film 100 microns

Applications: displays, miniature devices, porcelain, instruments  
Max. product weight: up to 1500 gr.



Maximum product size: **160 x 100 x 20 mm**

### Product data

Overall transport box dimensions  
246 x 146 x 46 mm  
Fefco 0427 hinged lid box  
Quality E 1.20  
Scope of delivery = Fixing insert 1 unit,  
Transport box 1 unit

Article code	Version
<b>FL 161002 S</b>	NORMLine 50, PU film 50 microns
<b>FL 161002 ESDS</b>	ESDLine 50, PU film ESD 50 microns
<b>FL 161002 EC6S</b>	ECOLine 50, PE film 50 microns

Applications: Printed circuit boards  
Max. product weight: up to 500 gr.



Maximum product size: **160 x 120 x 40 mm**

### Product data

Overall transport box dimensions 182 x 165 x 52 mm  
Fefco 0427 hinged lid box  
Quality E 1.20  
Scope of delivery = Fixing insert 1 unit,  
Transport box 1 unit

Article code	Version
<b>FL 161204 S</b>	NORMLine 50, PU film 50 microns
<b>FL 161204 ESDS</b>	ESDLine 50, PU film ESD 50 microns
<b>FL 161204 EC6S</b>	ECOLine 50, PE film 50 microns

Applications: Printed circuit boards  
Max. product weight: up to 500 gr.

The indicated max. weights are approximate values and can vary depending on the product to be shipped.

## The Retention Packaging



FL 161205

Maximum product size: **160 x 120 x 50 mm**

### Product data

Overall transport box dimensions 182 x 165 x 75 mm  
Fefco 0427 hinged lid box  
Quality E 1.20  
Scope of delivery = Fixing insert 1 unit,  
Transport box 1 unit

Article code	Version
<b>FL 161205 S</b>	NORMLine 50, PU film 50 microns
<b>FL 161205 ESDS</b>	ESDLine 50, PU film ESD 50 microns
<b>FL 161205 EC6S</b>	ECOLine 50, PE film 50 microns

Applications: printed circuit boards, hard disk drives  
Max. product weight: up to 500 gr.



FL 161210

Maximum product size: **160 x 120 x 100 mm**

### Product data

Overall transport box dimensions 200 x 167 x 139 mm  
Fefco 0713 with crash-lock base and closing lid  
Quality B 1.30  
Scope of delivery = Fixing insert 1 unit,  
Transport box 1 unit

Article code	Version
<b>FL 161210 S</b>	NORMLine 50, PU film 50 microns
<b>FL 161210 ESDS</b>	ESDLine 50, PU film ESD 50 microns
<b>FL 161210 EC6S</b>	ECOLine 50, PE film 50 microns

Applications: displays, mechatronics, controller, glass products  
Max. product weight: up to 1500 gr.



FL 180906

Maximum product size: **180 x 90 x 60 mm**

### Product data

Overall transport box dimensions 196 x 115 x 96 mm  
Fefco 0713 with crash-lock base and closing lid  
Quality B 1.30  
Scope of delivery = Fixing insert 1 unit,  
Transport box 1 unit

Article code	Version
<b>FL 180906 S</b>	NORMLine 50, PU film 50 microns
<b>FL 180906 ESDS</b>	ESDLine 50, PU film ESD 50 microns
<b>FL 180906 EC6S</b>	ECOLine 50, PE film 50 microns

Applications: mobile phones, mechatronics, miniature devices  
Max. product weight: up to 800 gr.

The indicated max. weights are approximate values and can vary depending on the product to be shipped.



## The Retention Packaging



Maximum product size: **180 x 100 x 40 mm**

### Product data

Overall transport box dimensions 218 x 148 x 76 mm  
Fefco 0713 with crash-lock base  
Quality E 1.20  
Scope of delivery = Fixing insert 1 unit,  
Transport box 1 unit

### Article code

### Version

<b>FL 181004 S</b>	NORMLine 50, PU film 50 microns
<b>FL 181004 ESDS</b>	ESDLine 50, PU film ESD 50 microns
<b>FL 181004 EC6S</b>	ECOLine 50, PE film 50 microns

Applications: hard disk drives, displays, mechatronics, miniature devices. Max. product weight: up to 1000 gr.



Maximum product size: **180 x 100 x 60 mm**

### Product data

Overall transport box dimensions 214 x 156 x 109 mm  
Fefco 0713 with crash-lock base and closing lid  
Quality B 1.30  
Scope of delivery = Fixing insert 1 unit,  
Transport box 1 unit

### Article code

### Version

<b>FL 181006 S</b>	NORMLine 50, PU film 50 microns
<b>FL 181006 ESDS</b>	ESDLine 50, PU film ESD 50 microns
<b>FL 181006 EC6S</b>	ECOLine 50, PE film 50 microns

Applications: displays, small devices, controllers, mechatronics  
Max. product weight: up to 1000 gr.



Maximum product size: **190 x 160 x 60 mm**

### Product data

Overall transport box dimensions 224 x 224 x 104 mm  
Fefco 0713 with crash-lock base and closing lid  
Quality B 1.30  
Scope of delivery = Fixing insert 1 unit,  
Transport box 1 unit

### Article code

### Version

<b>FL 191606 S</b>	NORMLine 50, PU film 50 microns
<b>FL 191606 ESDS</b>	ESDLine 50, PU film ESD 50 microns
<b>FL 191606 EC6S</b>	ECOLine 50, PE film 50 microns

Applications: displays, small devices, controllers, mechatronics  
Max. product weight: up to 1000 gr.

The indicated max. weights are approximate values and can vary depending on the product to be shipped.



## The Retention Packaging



FL 202006

Maximum product size: **200 x 200 x 60 mm**

### Product data

Overall transport box dimensions 249 x 235 x 99 mm  
Fefco 0713 with crash-lock base and closing lid  
Quality B 1.30  
Scope of delivery = Fixing insert 1 unit,  
Transport box 1 unit

Article code	Version
<b>FL 202006 S</b>	NORMLine 50, PU film 50 microns
<b>FL 202006 ESDS</b>	ESDLine 50, PU film ESD 50 microns
<b>FL 202006 EC6S</b>	ECOLine 50, PE film 50 microns
<b>FL 202006 MS</b>	MAXILine 100, PU film 100 microns

Applications: displays, controllers, small devices, instruments  
Max. product weight: up to 1500 gr.



FL 202008

Maximum product size: **200 x 200 x 80 mm**

### Product data

Overall transport box dimensions 249 x 235 x 119 mm  
Fefco 0713 with crash-lock base and closing lid  
Quality B 1.30  
Scope of delivery = Fixing insert 1 unit,  
Transport box 1 unit

Article code	Version
<b>FL 202008 S</b>	NORMLine 50, PU film 50 microns
<b>FL 202008 ESDS</b>	ESDLine 50, PU film ESD 50 microns
<b>FL 202008 EC6S</b>	ECOLine 50, PE film 50 microns
<b>FL 202008 MS</b>	MAXILine 100, PU film 100 microns

Applications: displays, controller, small devices, instruments  
Max. product weight: up to 1500 gr.



FL 221506

Maximum product size: **220 x 150 x 60 mm**

### Product data

Overall transport box dimensions 255 x 199 x 99 mm  
Fefco 0713 with crash-lock base and closing lid  
Quality B 1.30  
Scope of delivery = Fixing insert 1 unit,  
Transport box 1 unit

Article code	Version
<b>FL 221506 S</b>	NORMLine 50, PU film 50 microns
<b>FL 221506 ESDS</b>	ESDLine 50, PU film ESD 50 microns
<b>FL 221506 EC6S</b>	ECOLine 50, PE film 50 microns
<b>FL 221506 MS</b>	MAXILine 100, PU film 100 microns

Applications: CD/DVD drives, controllers, small devices  
Max. product weight: up to 1500 gr.

The indicated max. weights are approximate values and can vary depending on the product to be shipped.

## The Retention Packaging



FL 221508

Maximum product size: **220 x 150 x 80 mm**

### Product data

Overall transport box dimensions 255 x 199 x 119 mm  
Fefco 0713 with crash-lock base and closing lid  
Quality B 1.30  
Scope of delivery = Fixing insert 1 unit,  
Transport box 1 unit

Article code	Version
<b>FL 221508 S</b>	NORMLine 50, PU film 50 microns
<b>FL 221508 ESDS</b>	ESDLine 50, PU film ESD 50 microns
<b>FL 221508 EC6S</b>	ECOLine 50, PE film 50 microns
<b>FL 221508 MS</b>	MAXILine 100, PU film 100 microns

Applications: CD/DVD drives, controllers, small devices  
Max. product weight: up to 1500 gr.



FL 231502

Maximum product size: **230 x 150 x 20 mm**

### Product data

Overall transport box dimensions 338 x 211 x 47 mm  
Fefco 0427 whinged lid box and accessory compartment, Quality E1.40  
Scope of delivery = Fixing insert 1 unit, Transport box 1 unit

with accessory compartment

Article-code	Version
<b>FL 231502 S</b>	NORMLine 50, PU film 50 microns
<b>FL 231502 ESDS</b>	ESDLine 50, PU film ESD 50 microns
<b>FL 231502 EC6S</b>	ECOLine 50, PE film 50 microns
<b>FL 231502 MS</b>	MAXILine 100, PU film 100 microns

Applications: tablets, plates  
Max. product weight: up to 1000 gr.



FL 231806

Maximum product size: **230 x 180 x 60 mm**

### Product data

Overall transport box dimensions 300 x 210 x 89 mm  
Fefco 0713 with crash-lock base and closing lid  
Quality B 1.30  
Scope of delivery = Fixing insert 1 unit,  
Transport box 1 unit

Article code	Version
<b>FL 231806 S</b>	NORMLine 50, PU film 50 microns
<b>FL 231806 ESDS</b>	ESDLine 50, PU film ESD 50 microns
<b>FL 231806 EC6S</b>	ECOLine 50, PE film 50 microns
<b>FL 231806 MS</b>	MAXILine 100, PU film 100 microns

Applications: CD/DVD drives, controllers, small devices  
Max. product weight: up to 1500 gr.

The indicated max. weights are approximate values and can vary depending on the product to be shipped.

## The Retention Packaging



Maximum product size: **240 x 100 x 40 mm**

### Product data

Overall transport box dimensions  
306 x 153 x 92 mm  
Fefco 0713 with crash-lock base and closing lid  
Quality B 1.30  
Scope of delivery = Fixing insert 1 unit,  
Transport box 1 unit

Article-code	Version
<b>FL 241004 S</b>	NORMLine 50, PU film 50 microns
<b>FL 241004 ESDS</b>	ESDLine 50, PU film ESD 50 microns
<b>FL 241004 EC6S</b>	ECOLine 50, PE film 50 microns

Applications: controllers, control panels, instruments, plates  
Max. product weight: up to 1500 gr.



Maximum product size: **250 x 250 x 60 mm**

### Product data

Overall transport box dimensions 300 x 295 x 108 mm  
Fefco 0713 with crash-lock base and closing lid  
Quality C 1.40  
Scope of delivery = Fixing insert 1 unit,  
Transport box 1 unit

Article code	Version
<b>FL 252506 S</b>	NORMLine 50, PU film 50 microns
<b>FL 252506 ESDS</b>	ESDLine 50, PU film ESD 50 microns
<b>FL 252506 EC6S</b>	ECOLine 50, PE film 50 microns
<b>FL 252506 MS</b>	MAXILine 100, PU film 100 microns

Applications: controllers, control panels, instruments  
Max. product weight: up to 2000 gr.



Maximum product size: **250 x 250 x 80 mm**

### Product data

Overall transport box dimensions 300 x 295 x 138 mm  
Fefco 0713 with crash-lock base and closing lid  
Quality C 1.40  
Scope of delivery = Fixing insert 1 unit,  
Transport box 1 unit

Article code	Version
<b>FL 252508 S</b>	NORMLine 50, PU film 50 microns
<b>FL 252508 ESDS</b>	ESDLine 50, PU film ESD 50 microns
<b>FL 252508 EC6S</b>	ECOLine 50, PE film 50 microns
<b>FL 252508 MS</b>	MAXILine 100, PU film 100 microns

Applications: controllers, control panels, instruments  
Max. product weight: up to 2000 gr.

The indicated max. weights are approximate values and can vary depending on the product to be shipped.

## The Retention Packaging



FL 281607

Maximum product size: **280 x 160 x 70 mm**

### Product data

Overall transport box dimensions 335 x 232 x 121 mm  
Fefco 0713 with crash-lock base and closing lid  
Quality B 1.30  
Scope of delivery = Fixing insert 1 unit,  
Transport box 1 unit

Article code	Version
<b>FL 281607 S</b>	NORMLine 50, PU film 50 microns
<b>FL 281607 ESDS</b>	ESDLine 50, PU film ESD 50 microns
<b>FL 281607 EC6S</b>	ECOLine 50, PE film 50 microns

Applications: 1 DIN car audio units, controllers, small devices  
Max. product weight: up to 2000 gr.



FL 281812

Maximum product size: **280 x 180 x 120 mm**

### Product data

Overall transport box dimensions 325 x 297 x 178 mm  
Fefco 0201 slotted-type box with top and bottom flaps  
Quality C 1.30  
Scope of delivery = Fixing insert 1 unit,  
Transport box 1 unit

Article code	Version
<b>FL 281812 S</b>	NORMLine 50, PU film 50 microns
<b>FL 281812 ESDS</b>	ESDLine 50, PU film ESD 50 microns
<b>FL 281812 EC6S</b>	ECOLine 50, PE film 50 microns
<b>FL 281812 MS</b>	MAXILine 100, PU film 100 microns

Applications: double DIN GPS units, control panels, instruments  
Max. product weight: up to 2500 gr.



FL 292606

Maximum product size: **290 x 260 x 60 mm**

### Product data

Overall transport box dimensions  
452 x 339 x 98 mm  
Fefco 0427 hinged lid box, Quality B 1.30  
Scope of delivery = Fixing insert 1 unit,  
Transport box 1 unit

Article code	Version
<b>FL 292606 S</b>	NORMLine 50, PU film 50 microns
<b>FL 292606 ESDS</b>	ESDLine 50, PU film ESD 50 microns
<b>FL 292606 EC6S</b>	ECOLine 50, PE film 50 microns
<b>FL 292606 MS</b>	MAXILine 100, PU film 100 microns

Applications: printed circuit boards, control panels, instruments  
Max. product weight: up to 2500 gr.

The indicated max. weights are approximate values and can vary depending on the product to be shipped.

## The Retention Packaging



FL 300905

Maximum product size: **300 x 90 x 50 mm**

### Product data

Overall transport box dimensions 352 x 143 x 72 mm  
Fefco 0421 hinged lid box  
Quality B 1.30  
Scope of delivery = Fixing insert 1 unit,  
Transport box 1 unit

Article code	Version
<b>FL 300905 S</b>	NORMLine 50, PU film 50 microns
<b>FL 300905 ESDS</b>	ESDLine 50, PU film ESD 50 microns
<b>FL 300905 EC6S</b>	ECOLine 50, PE film 50 microns

Applications: batteries, probes, endoscopes  
Max. product weight: up to 800 gr.



FL 302007

Maximum product size: **300 x 200 x 70 mm**

### Product data

Overall transport box dimensions 344 x 251 x 118 mm  
Fefco 0713 with crash-lock base and closing lid  
Quality C 1.40  
Scope of delivery = Fixing insert 1 unit,  
Transport box 1 unit

Article code	Version
<b>FL 302007 S</b>	NORMLine 50, PU film 50 microns
<b>FL 302007 ESDS</b>	ESDLine 50, PU film ESD 50 microns
<b>FL 302007 EC6S</b>	ECOLine 50, PE film 50 microns
<b>FL 302007 MS</b>	MAXILine 100, PU film 100 microns

Applications: controllers, control panels, instruments, armatures  
Max. product weight: up to 2500 gr.



FL 302010

Maximum product size: **300 x 200 x 100 mm**

### Product data

Overall transport box dimensions 344 x 251 x 148 mm  
Fefco 0713 with crash-lock base and closing lid  
Quality C 1.40  
Scope of delivery = Fixing insert 1 unit,  
Transport box 1 unit

Article code	Version
<b>FL 302010 S</b>	NORMLine 50, PU film 50 microns
<b>FL 302010 ESDS</b>	ESDLine 50, PU film ESD 50 microns
<b>FL 302010 EC6S</b>	ECOLine 50, PE film 50 microns
<b>FL 302010 MS</b>	MAXILine 100, PU film 100 microns

Applications: controllers, control panels, instruments, armatures  
Max. product weight: up to 2500 gr.

The indicated max. weights are approximate values and can vary depending on the product to be shipped.



## The Retention Packaging



Maximum product size: **300 x 220 x 140 mm**

### Product data

Overall transport box dimensions 349 x 339 x 200 mm  
Fefco 0201 slotted-type box with top and bottom flaps  
Quality C 1.30  
Scope of delivery = Fixing insert 1 unit,  
Transport box 1 unit

Article code	Version
<b>FL 302214 S</b>	NORMLine 50, PU film 50 microns
<b>FL 302214 ESDS</b>	ESDLine 50, PU film ESD 50 microns
<b>FL 302214 EC6S</b>	ECOLine 50, PE film 50 microns
<b>FL 302214 MS</b>	MAXILine 100, PU film 100 microns

Applications: panels, controllers, control panels, instruments  
Max. product weight: up to 2500 gr.



Maximum product size: **300 x 300 x 80 mm**

### Product data

Overall transport box dimensions 400 x 343 x 126 mm  
Fefco 0713 with crash-lock base and closing lid  
Quality C 1.40  
Scope of delivery = Fixing insert 1 unit,  
Transport box 1 unit

Article code	Version
<b>FL 303008 S</b>	NORMLine 50, PU film 50 microns
<b>FL 303008 ESDS</b>	ESDLine 50, PU film ESD 50 microns
<b>FL 303008 EC6S</b>	ECOLine 50, PE film 50 microns
<b>FL 303008 MS</b>	MAXILine 100, PU film 100 microns

Applications: laptops, controllers, control panels, instruments  
Max. product weight: up to 3000 gr.



Maximum product size: **310 x 210 x 40 mm**

### Product data

Overall transport box dimensions 376 x 268 x 96 mm  
Fefco 0201 slotted-type box with top and bottom flaps  
Quality B 1.20  
Scope of delivery = Fixing insert 1 unit,  
Transport box 1 unit

Article code	Version
<b>FL 312104 S</b>	NORMLine 50, PU film 50 microns
<b>FL 312104 ESDS</b>	ESDLine 50, PU film ESD 50 microns
<b>FL 312104 EC5S</b>	ECOLine 50, PE film 50 microns
<b>FL 312104 MS</b>	MAXILine 100, PU film 100 microns

Applications: 10" to 13" netbooks, panels, control panels, instruments. Max. product weight: up to 2500 gr.

**New!**

The indicated max. weights are approximate values and can vary depending on the product to be shipped.



## The Retention Packaging



Maximum product size: **310 x 220 x 40 mm**

### Product data

Overall transport box dimensions 368 x 288 x 116 mm  
Fefco 0201 slotted-type box with top and bottom flaps  
Quality C 1.30  
Scope of delivery = Fixing insert 1 unit,  
Transport box 1 unit

Article code	Version
<b>FL 312204 S</b>	NORMLine 50, PU film 50 microns
<b>FL 312204 ESDS</b>	ESDLine 50, PU film ESD 50 microns
<b>FL 312204 EC6S</b>	ECOLine 50, PE film 50 microns
<b>FL 312204 MS</b>	MAXILine 100, PU film 100 microns

Applications: 10" to 12" netbooks, panels, control panels, instruments. Max. product weight: up to 3000 gr.



Maximum product size: **340 x 200 x 120 mm**

### Product data

Overall transport box dimensions 389 x 272 x 162 mm  
Fefco 0201 slotted-type box with top and bottom flaps  
Quality C 1.30  
Scope of delivery = Fixing insert 1 unit,  
Transport box 1 unit

Article code	Version
<b>FL 342012 S</b>	NORMLine 50, PU film 50 microns
<b>FL 342012 ESDS</b>	ESDLine 50, PU film ESD 50 microns
<b>FL 342012 EC6S</b>	ECOLine 50, PE film 50 microns
<b>FL 342012 MS</b>	MAXILine 100, PU film 100 microns

Applications: airbags, controllers, control panels, instruments  
Max. product weight: up to 2000 gr.



Maximum product size: **340 x 250 x 50 mm**

### Product data

Overall transport box dimensions 414 x 346 x 138 mm  
Fefco 0201 slotted-type box with top and bottom flaps  
Quality BC 2.30  
Scope of delivery = Fixing insert 1 unit,  
Transport box 1 unit

Article code	Version
<b>FL 342505 S</b>	NORMLine 50, PU film 50 microns
<b>FL 342505 ESDS</b>	ESDLine 50, PU film ESD 50 microns
<b>FL 342505 EC6S</b>	ECOLine 50, PE film 50 microns
<b>FL 342505 MS</b>	MAXILine 100, PU film 100 microns

Applications: 15" laptops, controllers, control panels, instruments, panels. Max. product weight: up to 3500 gr.

The indicated max. weights are approximate values and can vary depending on the product to be shipped.

## The Retention Packaging



FL 352008

Maximum product size: **350 x 200 x 80 mm**

### Product data

Overall transport box dimensions 394 x 292 x 123 mm  
Fefco 0713 with crash-lock base and closing lid  
Quality C 1.40  
Scope of delivery = Fixing insert 1 unit,  
Transport box 1 unit

Article code	Version
<b>FL 352008 S</b>	NORMLine 50, PU film 50 microns
<b>FL 352008 ESDS</b>	ESDLine 50, PU film ESD 50 microns
<b>FL 352008 EC6S</b>	ECOLine 50, PE film 50 microns
<b>FL 352008 MS</b>	MAXILine 100, PU film 100 microns

Applications: controllers, control panels, instruments, panels  
Max. product weight: up to 2000 gr.



FL 352504

Maximum product size: **350 x 250 x 40 mm**

### Product data

Overall transport box dimensions 435 x 315 x 115 mm  
Fefco 0427 hinged lid box  
Quality C 1.40  
Scope of delivery = Fixing insert 1 unit,  
Transport box 1 unit

Article code	Version
<b>FL 352504 S</b>	NORMLine 50, PU film 50 microns
<b>FL 352504 ESDS</b>	ESDLine 50, PU film ESD 50 microns
<b>FL 352504 EC6S</b>	ECOLine 50, PE film 50 microns
<b>FL 352504 MS</b>	MAXILine 100, PU film 100 microns

Applications: flat panels, TFT displays, technical glass products  
Max. product weight: up to 2000 gr.



FL 362410

Maximum product size: **360 x 240 x 100 mm**

### Product data

Overall transport box dimensions 434 x 306 x 171 mm  
Fefco 0201 slotted-type box with top and bottom flaps  
Quality C 1.30  
Scope of delivery = Fixing insert 1 unit,  
Transport box 1 unit

Article code	Version
<b>FL 362410 S</b>	NORMLine 50, PU film 50 microns
<b>FL 362410 ESDS</b>	ESDLine 50, PU film ESD 50 microns
<b>FL 362410 EC6S</b>	ECOLine 50, PE film 50 microns
<b>FL 362410 MS</b>	MAXILine 100, PU film 100 microns

Applications: controllers, control panels, instruments  
Max. product weight: up to 2500 gr.

The indicated max. weights are approximate values and can vary depending on the product to be shipped.

## The Retention Packaging

**New!**



FL 362604

Maximum product size: **360 x 260 x 40 mm**

### Product data

Overall transport box dimensions  
436 x 318 x 100 mm  
Fefco 0201 slotted-type box with top and bottom flaps  
Quality B 1.40  
Scope of delivery = Fixing insert 1 unit, Transport box 1 unit

Article-code	Version
<b>FL 362604 S</b>	NORMLine 50, PU film 50 microns
<b>FL 362604 ESDS</b>	ESDLine 50, PU film ESD 50 microns
<b>FL 362604 EC5S</b>	ECOLine 50, PE film 50 microns
<b>FL 362604 MS</b>	MAXILine 100, PU film 100 microns

Applications: 15" laptops, controllers, instruments, plates  
Max. product weight: up to 3500 gr.



FL 382508

Maximum product size: **380 x 250 x 80 mm**

### Product data

Overall transport box dimensions  
448 x 334 x 140 mm  
Fefco 0201 slotted-type box with top and bottom flaps  
Quality C 1.30  
Scope of delivery = Fixing insert 1 unit, Transport box 1 unit

Article-code	Version
<b>FL 382508 S</b>	NORMLine 50, PU film 50 microns
<b>FL 382508 ESDS</b>	ESDLine 50, PU film ESD 50 microns
<b>FL 382508 EC6S</b>	ECOLine 50, PE film 50 microns
<b>FL 382508 MS</b>	MAXILine 100, PU film 100 microns

Applications: controllers, instruments, plates  
Max. product weight: up to 3000 gr.



FL 402010

Maximum product size: **400 x 200 x 100 mm**

### Product data

Overall transport box dimensions 477 x 272 x 154 mm  
Fefco 0713 with crash-lock base and closing lid  
Quality B 1.40  
Scope of delivery = Fixing insert 1 unit,  
Transport box 1 unit

Article code	Version
<b>FL 402010 S</b>	NORMLine 50, PU film 50 microns
<b>FL 402010 ESDS</b>	ESDLine 50, PU film ESD 50 microns
<b>FL 402010 EC6S</b>	ECOLine 50, PE film 50 microns
<b>FL 402010 MS</b>	MAXILine 100, PU film 100 microns

Applications: controllers, control panels, instruments, assemblies  
Max. product weight: up to 3000 gr.

The indicated max. weights are approximate values and can vary depending on the product to be shipped.

## The Retention Packaging



Maximum product size: **400 x 250 x 100 mm**

### Product data

Overall transport box dimensions 547 x 335 x 170 mm  
Fefco 0201 slotted-type box with top and bottom flaps  
Quality BC 2.30  
Scope of delivery = Fixing insert 1 unit,  
Transport box 1 unit

Article code	Version
<b>FL 402510 S</b>	NORMLine 50, PU film 50 microns
<b>FL 402510 ESDS</b>	ESDLine 50, PU film ESD 50 microns
<b>FL 402510 EC6S</b>	ECOLine 50, PE film 50 microns
<b>FL 402510 MS</b>	MAXILine 100, PU film 100 microns

Applications: DVD recorders, panels, instruments  
Max. product weight: up to 3500 gr.



Maximum product size: **400 x 300 x 50 mm**

### Product data

Overall transport box dimensions 556 x 421 x 168 mm  
Fefco 0201 slotted-type box with top and bottom flaps  
Quality BC 2.30  
Scope of delivery = Fixing insert 1 unit,  
Transport box 1 unit

Article code	Version
<b>FL 403005 S</b>	NORMLine 50, PU film 50 microns
<b>FL 403005 ESDS</b>	ESDLine 50, PU film ESD 50 microns
<b>FL 403005 EC6S</b>	ECOLine 50, PE film 50 microns
<b>FL 403005 MS</b>	MAXILine 100, PU film 100 microns

Applications: 17" laptops, controllers, instruments, flat panels  
Max. product weight: up to 4500 gr.



Maximum product size: **400 x 300 x 60 mm**

### Product data

Overall transport box dimensions 552 x 339 x 88 mm  
Fefco 0427 hinged lid box  
Quality B 1.40  
Scope of delivery = Fixing insert 1 unit,  
Transport box 1 unit

Article code	Version
<b>FL 403006 S</b>	NORMLine 50, PU film 50 microns
<b>FL 403006 ESDS</b>	ESDLine 50, PU film ESD 50 microns
<b>FL 403006 EC6S</b>	ECOLine 50, PE film 50 microns
<b>FL 403006 MS</b>	MAXILine 100, PU film 100 microns

Applications: controllers, instruments, flat panels  
Max. product weight: up to 2500 gr.

The indicated max. weights are approximate values and can vary depending on the product to be shipped.



## The Retention Packaging



Maximum product size: **400 x 320 x 110 mm**

### Product data

Overall transport box dimensions 538 x 380 x 190 mm  
Fefco 0201 slotted-type box with top and bottom flaps  
Quality BC 2.30  
Scope of delivery = Fixing insert 1 unit,  
Transport box 1 unit

Article code	Version
<b>FL 403211 S</b>	NORMLine 50, PU film 50 microns
<b>FL 403211 ES DS</b>	ESDLine 50, PU film ESD 50 microns
<b>FL 403211 EC6S</b>	ECOLine 50, PE film 50 microns
<b>FL 403211 MS</b>	MAXILine 100, PU film 100 microns

Applications: DCD recorders, 17" laptops, panels, instruments  
Max. product weight: up to 5000 gr.



Maximum product size: **470 x 300 x 50 mm**

### Product data

Overall transport box dimensions 566 x 366 x 112 mm  
Fefco 0201 slotted-type box with top and bottom flaps  
Quality B 1.40  
Scope of delivery = Fixing insert 1 unit,  
Transport box 1 unit

**New!**

Article code	Version
<b>FL 473005 S</b>	NORMLine 50, PU film 50 microns
<b>FL 473005 ES DS</b>	ESDLine 50, PU film ESD 50 microns
<b>FL 473005 EC5S</b>	ECOLine 50, PE film 50 microns
<b>FL 473005 MS</b>	MAXILine 100, PU film 100 microns

Applications: 17" laptops, DCD recorders, panels, instruments  
Max. product weight: up to 4500 gr.



Maximum product size: **500 x 320 x 150 mm**

### Product data

Overall transport box dimensions 615 x 395 x 228 mm  
Fefco 0201 slotted-type box with top and bottom flaps  
Quality BC 2.30  
Scope of delivery = Fixing insert 1 unit,  
Transport box 1 unit

Article code	Version
<b>FL 503215 S</b>	NORMLine 50, PU film 50 microns
<b>FL 503215 ES DS</b>	ESDLine 50, PU film ESD 50 microns
<b>FL 503215 EC6S</b>	ECOLine 50, PE film 50 microns
<b>FL 503215 MS</b>	MAXILine 100, PU film 100 microns

Applications: printed circuit boards, panels, control panels, instruments. Max. product weight: up to 5000 gr.

The indicated max. weights are approximate values and can vary depending on the product to be shipped.

## The Retention Packaging



Maximum product size: **500 x 400 x 100 mm**

### Product data

Overall transport box dimensions 635 x 480 x 188 mm  
Fefco 0201 slotted-type box with top and bottom flaps  
Quality BC 2.30  
Scope of delivery = Fixing insert 1 unit,  
Transport box 1 unit

Article code	Version
<b>FL 504010 S</b>	NORMLine 50, PU film 50 microns
<b>FL 504010 ESDS</b>	ESDLine 50, PU film ESD 50 microns
<b>FL 504010 EC6S</b>	ECOLine 50, PE film 50 microns
<b>FL 504010 MS</b>	MAXILine 100, PU film 100 microns

Applications: printed circuit boards, panels, control panels, instruments. Max. product weight: up to 5000 gr.



Maximum product size: **510 x 230 x 50 mm**

### Product data

Overall transport box dimensions  
592 x 309 x 88 mm  
Fefco 0427 hinged lid box, Quality B 1.40  
Scope of delivery = Fixing insert 1 unit,  
Transport box 1 unit

Article code	Version
<b>FL 512305 S</b>	NORMLine 50, PU film 50 microns
<b>FL 512305 ESDS</b>	ESDLine 50, PU film ESD 50 microns
<b>FL 512305 EC6S</b>	ECOLine 50, PE film 50 microns
<b>FL 512305 MS</b>	MAXILine 100, PU film 100 microns

Applications: printed circuit boards, panels, control panels, instruments. Max. product weight: up to 2500 gr.



Maximum product size: **510 x 300 x 50 mm**

### Product data

Overall transport box dimensions  
592 x 384 x 88 mm  
Fefco 0427 hinged lid box, Quality B 1.40  
Scope of delivery = Fixing insert 1 unit,  
Transport box 1 unit

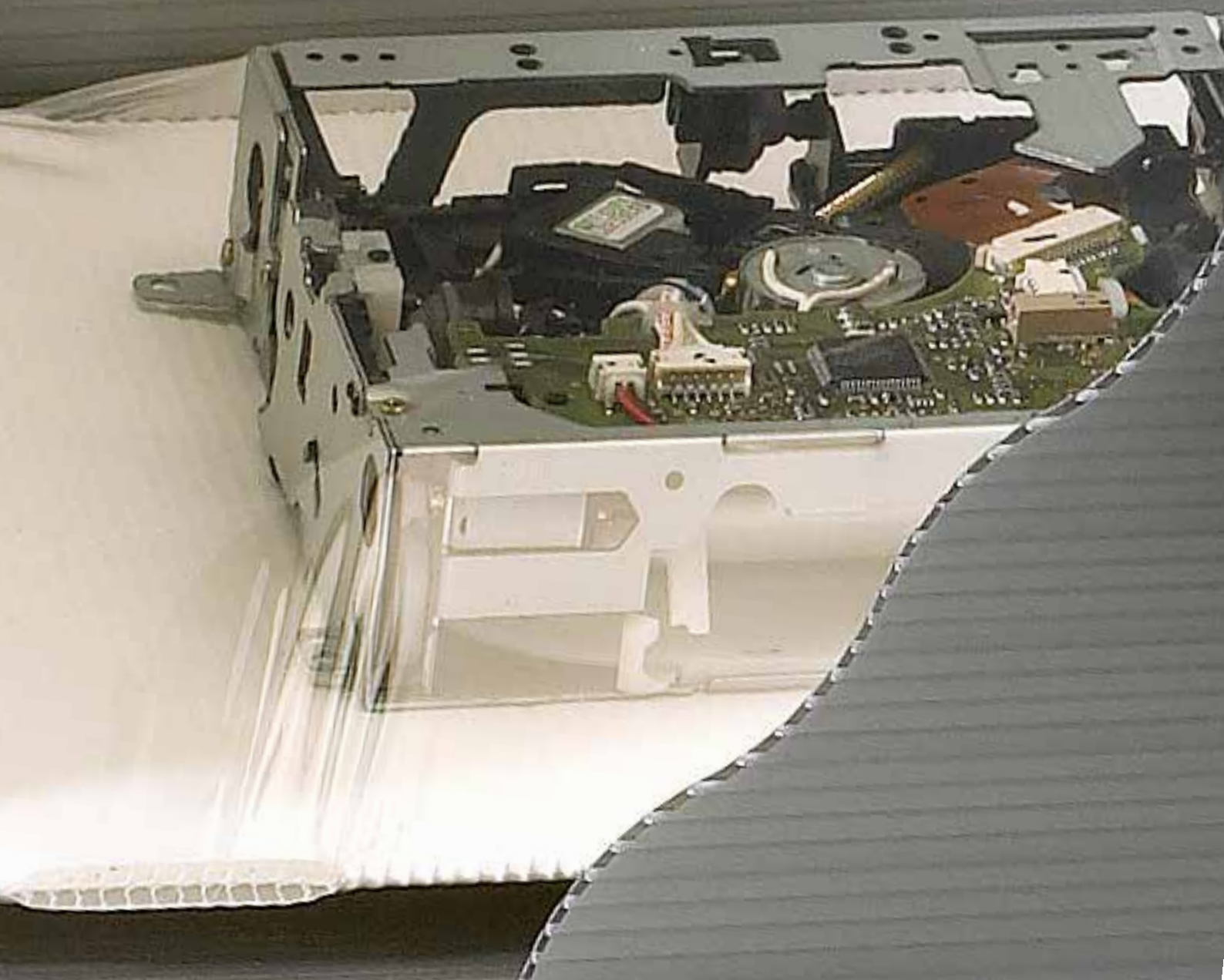
Article code	Version
<b>FL 513005 S</b>	NORMLine 50, PU film 50 microns
<b>FL 513005 ESDS</b>	ESDLine 50, PU film ESD 50 microns
<b>FL 513005 EC6S</b>	ECOLine 50, PE film 50 microns
<b>FL 513005 MS</b>	MAXILine 100, PU film 100 microns

Applications: printed circuit boards, panels, control panels, instruments. Max. product weight: up to 2500 gr.

The indicated max. weights are approximate values and can vary depending on the product to be shipped.



Things will be spick and span  
now ...





plastic retention  
packaging  
dust-sensitive goods  
of up to 4.0 kg (normally) in  
robust plastic packaging material  
reusable  
**Emba-flex**  
CLEANline®  
minimises the amount of fine particles  
reducing the amount of packaging  
for different product contours

# Emba-Flex Clean Line<sup>®</sup>

## The Plastic Retention Packaging



**Application:**

For dust-sensitive goods.  
Light products of up to 4.0 kg (normally),  
requiring medium level protection

**Features:**

Packaging made of pure twinwall polypropylene  
Very sturdy

**Advantages:**

Minimises the amount of fine particles usually present when  
using corrugated board packaging  
The amount of packaging types is substantially reduced  
Reusable

## The plastic retention packaging

### Emba-Flex CLEAN Line®

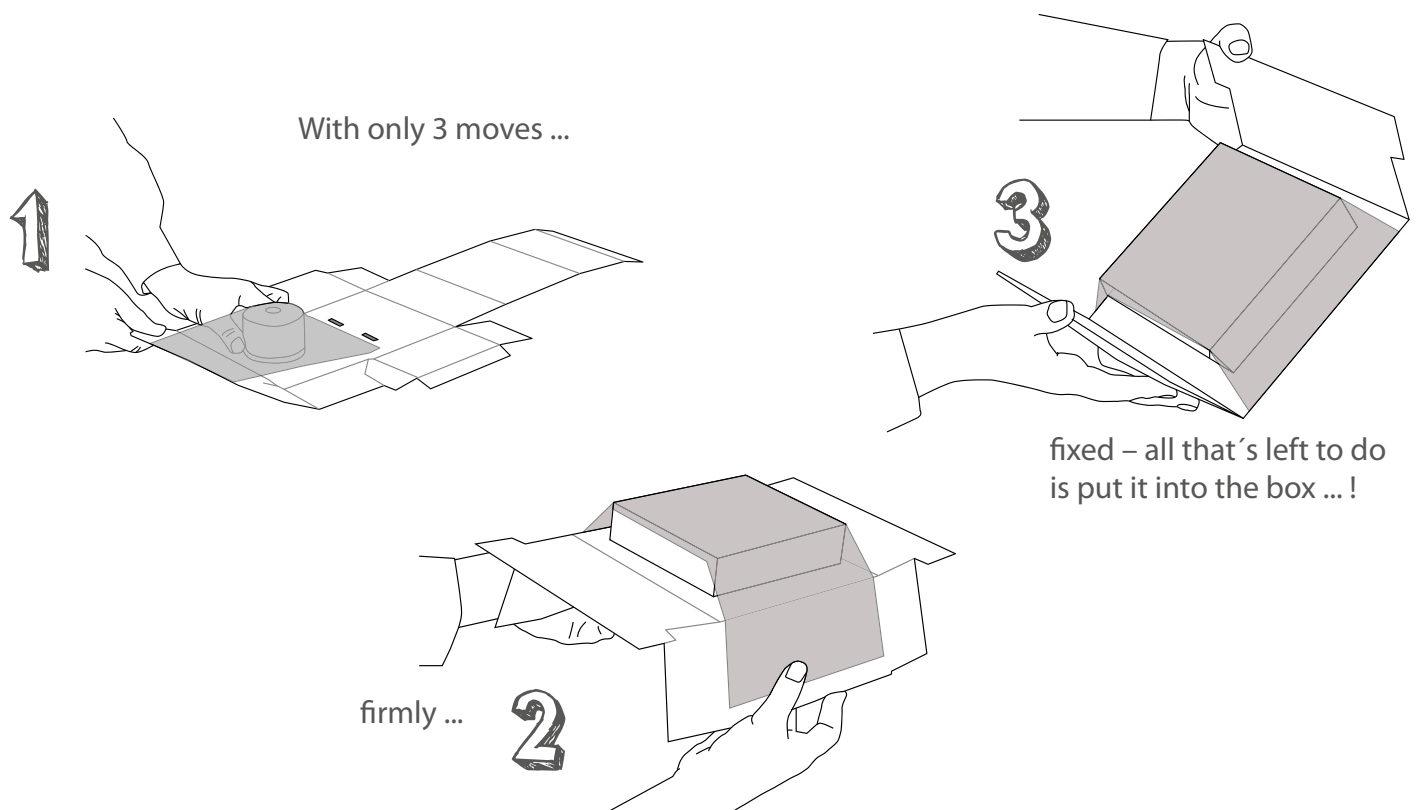
- made of twinwall polypropylene sheet
- high degree of protection for various product contours
- reduction of packaging diversity by up to 90%
- minimises the amount of fine particles usually present when using corrugated board packaging
- upon request also available as cleanroom version cleaned according to class 7
- packaging of high visual quality
- robust and reusable packaging



### The method

The special fold mechanism ensures that the stretch film fixes the product firmly to the corrugated cardboard format, so avoiding any slipping. The highly flexible but practically tear-free stretch film clings perfectly to the different product contours. This reduces your packaging diversity by up to 90 %.

The special PU-film is highly flexible and has unprecedented shrink behaviour after stretching. Even when stretched to an enormous extent the film almost returns back into it's original shape without a decrease in retention force.





## The plastic retention packaging

### Application examples

To meet the highest requirements, we have developed a new product line based on our proven and successful packaging systems Emba-Flex® (retention packaging) and Emba-Swing® (suspension packaging).

The idea was to offer a perfect solution for e.g. dental technology applications, precision engineering applications and chip technology applications, where dust-free packaging systems are necessary.

To a large extent, the use of plastic packaging material minimises the amount of fine particles usually present when using corrugated board packaging.



### The immediate delivery program

Maximum product size (mm)	Article code	Product data on page
120 x 70 x 40 mm	FL 120704 CLES	42
200 x 140 x 70 mm	FL 201407 CLES	42
280 x 190 x 90 mm	FL 281909 CLES	42
390 x 320 x 110 mm	FL 393211 CLES	43

Available in sets of 50 and more (1 insert, 1 box). Special sizes on request.



## The plastic retention packaging



### Product data

Overall transport box dimensions 171 x 112 x 72 mm  
 Fefco 0427 hinged lid box  
 Quality: Twinwall polypropylene, white, anti-static  
 Scope of delivery = Fixing insert 1 unit,  
 Transport box 1 unit

### Article code

**FL 120704 CLES**

### Version

ESDLine 50, PU film ESD 50 microns

Maximum product size: **120 x 70 x 40 mm**



### Product data

Overall transport box dimensions 254 x 194 x 120 mm  
 Fefco 0427 hinged lid box  
 Quality: Twinwall polypropylene, white, anti-static  
 Scope of delivery = Fixing insert 1 unit,  
 Transport box 1 unit

### Article code

**FL 201407 CLES**

### Version

ESDLine 75, PU film ESD 75 microns

Maximum product size: **200 x 140 x 70 mm**



### Product data

Overall transport box dimensions 343 x 245 x 145 mm  
 Fefco 0427 hinged lid box  
 Quality: Twinwall polypropylene, white, anti-static  
 Scope of delivery = Fixing insert 1 unit,  
 Transport box 1 unit

### Article code

**FL 281909 CLES**

### Version

ESDLine 75, PU film ESD 75 microns

Maximum product size: **280 x 190 x 90 mm**

The plastic retention packaging



FL 393211 CL

## Product data

Overall transport box dimensions 516 x 370 x 200 mm

Fefco 0201 folding box with base and cover flaps

Quality: Twinwall polypropylene, white, anti-static

Scope of delivery = Fixing insert 1 unit,  
Transport box 1 unit

## Article code

## Version

**FL 393211 CLES**

ESDLine 100, PU film ESD 100 microns

Maximum product size: **390 x 320 x 110 mm**

# Emba-flex® ECO

## Now we're totally eco !

### Application:

For flat, lightweight items that weigh up to 3 kg (generally) and have the same design.

### Features:

The packaging is completely free from film and foam. The product is firmly fixed in the box.

### Advantages:

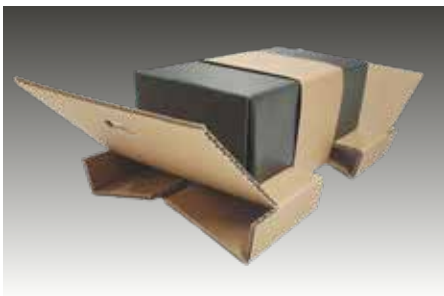
Your product is perfectly protected during shipment. This pure, paper-based single-material solution goes a long way in protecting the environment. Your customers will be impressed by your "totally eco" approach.

**European Patent EP 3 892 556**  
The only patented fixation packaging  
on a pure paper basis!



## The pure single-substance solution

Shipping sensitive products used to involve a lot of effort. It took time and expensive packaging material (usually made of foam or film) to prepare sensitive and high-quality products for despatch. Emba-Protec has solved both problems with a new innovative packaging! You have already achieved a great deal with the retention packaging from our company. Perfect protection at a reasonable cost. Now we have been able to replace the film with pure, high-quality kraft liner paper. We use a new type of folding process to secure your products. You save time, money and therefore considerable processing costs. And you are doing the environment a big favour.



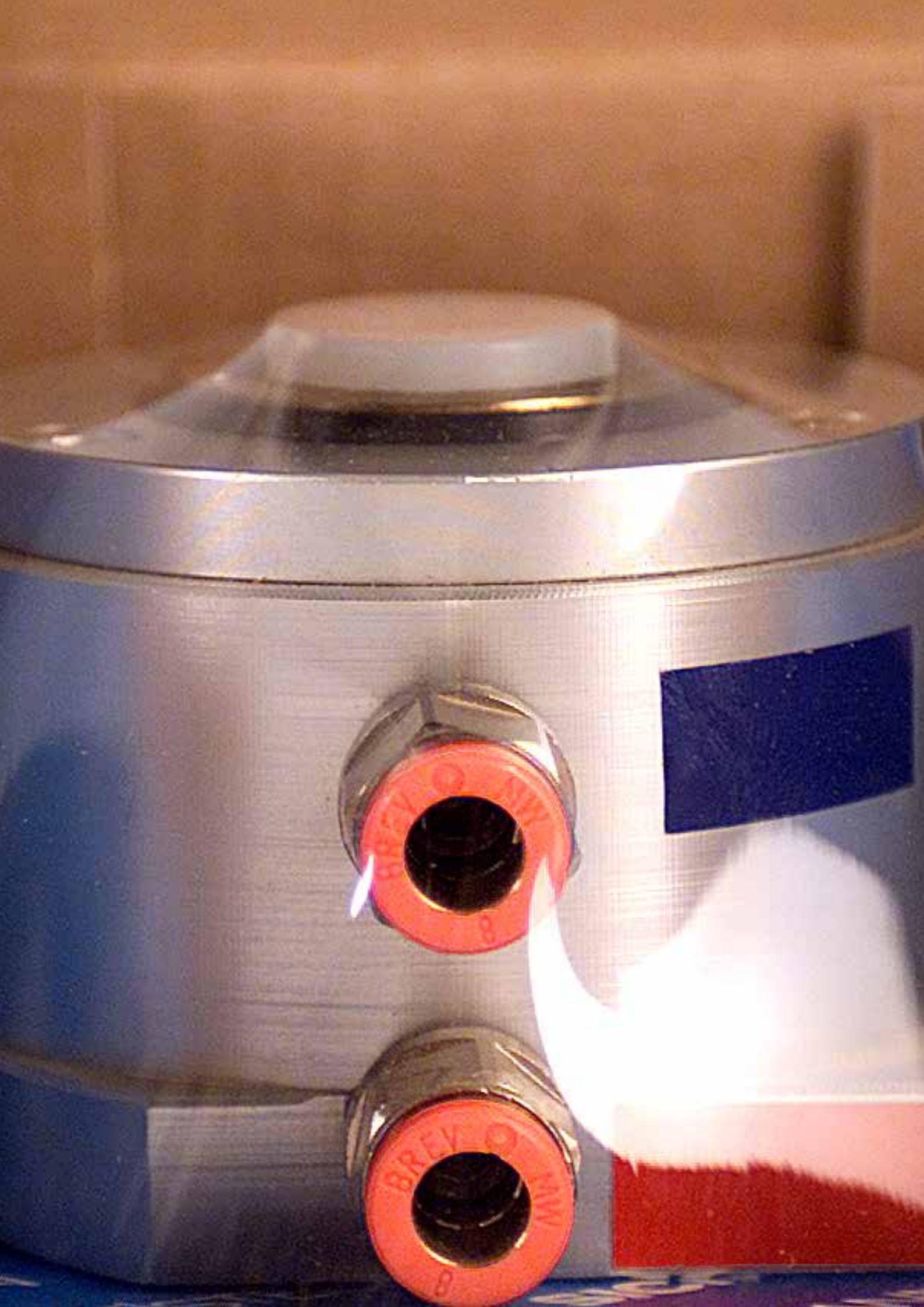
Effort  
Protection  
Eco

small  
large  
FULL

Emba-Flex<sup>®</sup> ECO  
European patent  
EP 3 892 556

**Doc Emba** recommends:  
The one-piece retention packaging





# retention packaging one-piece Emba-Quick®

intelligent handling  
high-speed packaging  
one-piece

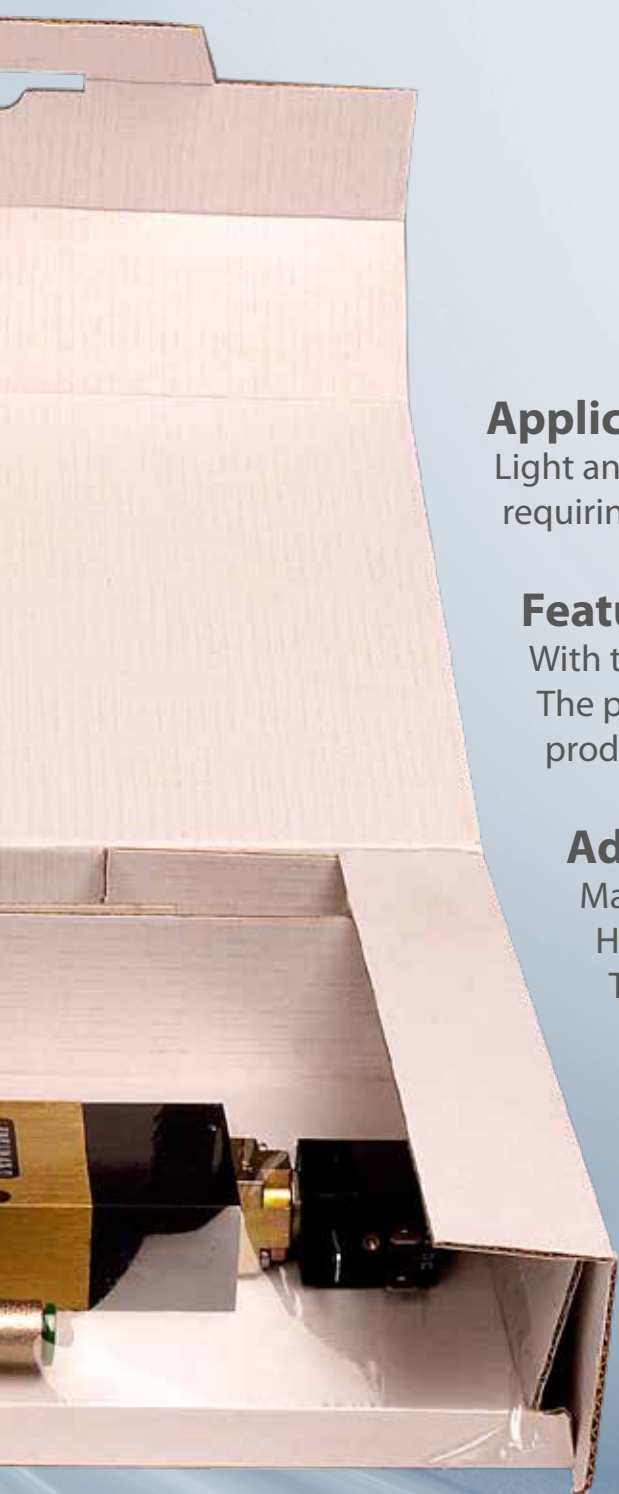
light and flat products of up to 2 kg (i.d.R.)  
for medium level protection  
major storage space savings  
transport box attached



# Emba-Quick<sup>®</sup>

The one-piece retention packaging





### **Application:**

Light and flat products of up to 2.0 kg (normally),  
requiring medium level protection

### **Features:**

With transport box attached

The packaging will adapt to even the most unusual  
product contours

### **Advantages:**

Major storage space savings

High-speed packaging

The amount of packaging types  
is substantially reduced



## The one-piece retention packaging

### Emba-Quick®

#### The one-piece retention packaging

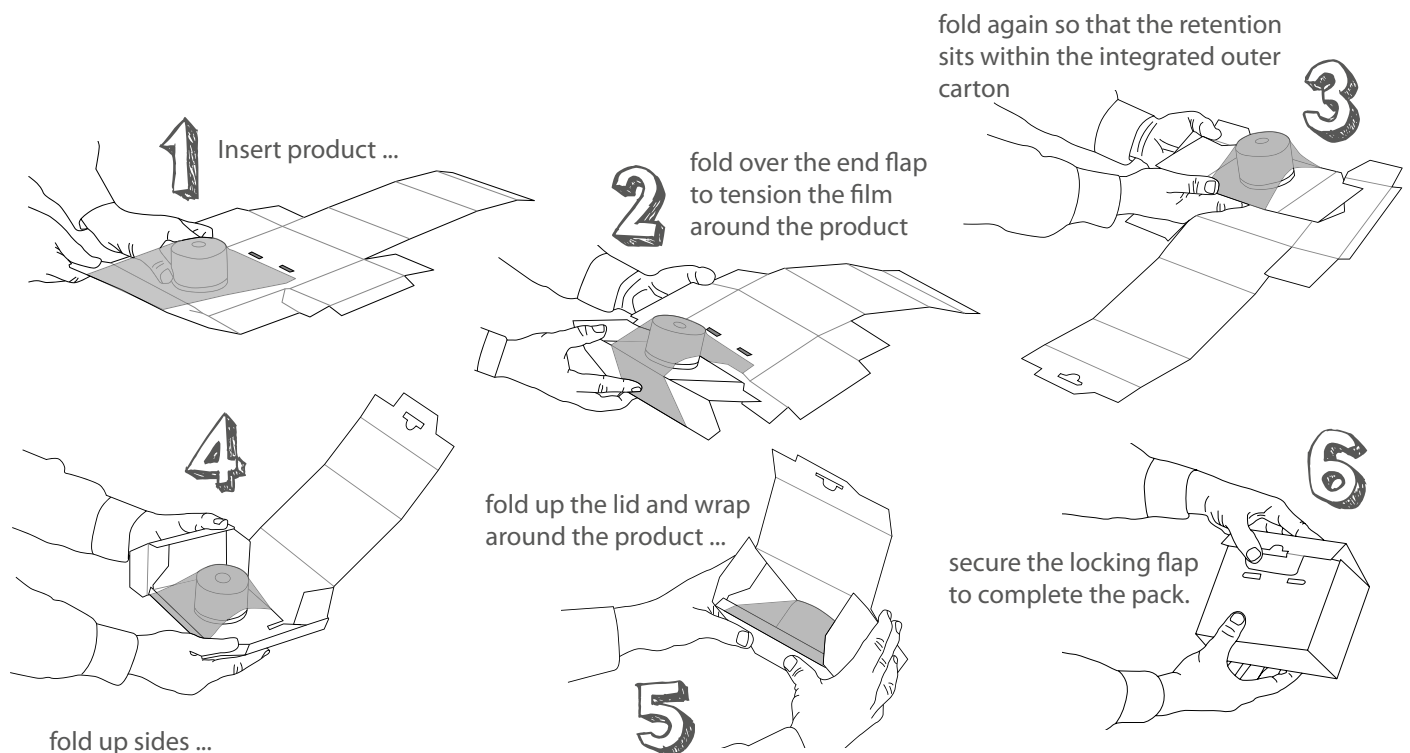
- packing in 10 seconds
- no extra transport box needed
- quick fastening avoids box gluing
- optionally with self-adhesive closure
- high-quality printing possible
- can be equipped with a hollow bottom or extra side pocket for accessories
- reduction of process costs (procurement, storing, shipment)
- reusable
- environment-friendly, can be disposed of with waste paper
- professional appearance
- economical due to standard program (no tool costs)



### The method

The same special stretch mechanism as for Emba-Flex®. The stretch film fixes the product firmly to the corrugated cardboard format.

Emba-Quick® comprises an attached transport box. This solution saves space, time and costs.



## The one-piece retention packaging

### Application examples

Emba-Quick® adapts optimally to the most varied product contours like a second skin. New products from your company can often be packed immediately with existing packaging sizes.

Also product accessories can be packed securely in accessory compartments or hollow bottom. Whether it's a manual, cables or remote controls, everything is securely fixed in position.

In addition to our immediate delivery program listed in the table below we also offer existing special packaging as well as new developments according to your individual needs.



### The immediate delivery program

Maximum product size (mm)	Article Codes NORM- / ESD- / ECOLine	Max. Product Weight	Page
70 x 50 x 20 mm	FL 070502 Q / ESQ / ECQ	ca. 0,4 kg	52
70 x 50 x 50 mm	FL 070505 Q / ESQ / ECQ	ca. 0,8 kg	52
80 x 50 x 30 mm	FL 080503 Q / ESQ / ECQ	ca. 0,8 kg	52
100 x 90 x 60 mm	FL 100906 Q / ESQ / ECQ	ca. 1,0 kg	53
120 x 90 x 40 mm	FL 120904 Q / ESQ / ECQ	ca. 1,0 kg	53
120 x 100 x 20 mm	FL 121002 Q / ESQ / ECQ	ca. 1,0 kg	53
120 x 110 x 60 mm	FL 121106 Q / ESQ / ECQ	ca. 1,0 kg	54
140 x 90 x 30 mm	FL 140903 Q / ESQ / ECQ	ca. 1,0 kg	54
140 x 90 x 50 mm	FL 140905 Q / ESQ / ECQ	ca. 1,0 kg	54
150 x 70 x 20 mm	FL 150702 Q / ESQ / ECQ	ca. 0,8 kg	55
150 x 130 x 50 mm	FL 151305 Q / ESQ / ECQ	ca. 1,0 kg	55
160 x 80 x 10 mm	FL 160801 Q / ESQ / ECQ	ca. 0,7 kg	55
180 x 110 x 50 mm	FL 181105 Q / ESQ / ECQ	ca. 2,0 kg	56
180 x 120 x 60 mm	FL 181206 Q / ESQ / ECQ	ca. 2,0 kg	56
180 x 180 x 40 mm	FL 181804 Q / ESQ / ECQ	ca. 2,0 kg	56
190 x 120 x 30 mm	FL 191203 Q / ESQ / ECQ	ca. 1,0 kg	57
200 x 120 x 20 mm	FL 201202 Q / ESQ / ECQ	ca. 1,5 kg	57
200 x 160 x 30 mm	FL 201603 Q / ESQ / ECQ	ca. 1,5 kg	57
240 x 160 x 70 mm	FL 241607 Q / ESQ / ECQ	ca. 2,0 kg	58
240 x 180 x 10 mm	FL 241801 Q / ESQ / ECQ	ca. 1,5 kg	58
250 x 180 x 50 mm	FL 251805 Q / ESQ / ECQ	ca. 2,0 kg	58
280 x 180 x 50 mm	FL 281805 Q / ESQ / ECQ	ca. 1,5 kg	59
400 x 250 x 30 mm	FL 402503 Q / ESQ / ECQ	ca. 2,0 kg	59



## The one-piece retention packaging



Maximum product size: **70 x 50 x 20 mm**

### Product data

Overall dimensions 89 x 72 x 44 mm

Quality E 1.40

Scope of delivery = Retention packaging with  
attached transport box  
1 unit

### Article code

### Version

**FL 070502 Q**

NORMLine 50, PU film 50 microns

**FL 070502 ESQ**

ESDLine 50, PU film ESD 50 microns

**FL 070502 ECQ**

ECOLine 50, PE film 50 microns

Applications: printed circuit boards, probes, sensors  
Max. product weight: up to 400 gr.



Maximum product size: **70 x 50 x 50 mm**

### Product data

Overall dimensions 106 x 92 x 78 mm

Quality E 1.40

Scope of delivery = Retention packaging with  
attached transport box  
1 unit

### Article code

### Version

**FL 070505 Q**

NORMLine 50, PU film 50 microns

**FL 070505 ESQ**

ESDLine 50, PU film ESD 50 microns

**FL 070505 ECQ**

ECOLine 50, PE film 50 microns

Applications: printed circuit boards, probes, sensors  
Max. product weight: up to 800 gr.



Maximum product size: **80 x 50 x 30 mm**

### Product data

Overall dimensions 107 x 84 x 66 mm

Quality B 1.40

Scope of delivery = Retention packaging with  
attached transport box  
1 unit

### Article code

### Version

**FL 080503 Q**

NORMLine 50, PU film 50 microns

**FL 080503 ESQ**

ESDLine 50, PU film ESD 50 microns

**FL 080503 ECQ**

ECOLine 50, PE film 50 microns

Applications: printed circuit boards, probes, sensors  
Max. product weight: up to 800 gr.

The indicated max. weights are approximate values and can vary depending on the product to be shipped.

## The one-piece retention packaging



Maximum product size: **100 x 90 x 60 mm**

### Product data

Overall dimensions 132 x 136 x 102 mm  
 Quality B 1.30  
 Scope of delivery = Retention packaging with attached transport box  
 1 unit

Article code	Version
<b>FL 100906 Q</b>	NORMLine 50, PU film 50 microns
<b>FL 100906 ESQ</b>	ESDLine 50, PU film ESD 50 microns
<b>FL 100906 ECQ</b>	ECOLine 50, PE film 50 microns

Applications: controllers, displays, sensors  
 Max. product weight: up to 1000 gr.



Maximum product size: **120 x 90 x 40 mm**

### Product data

Overall dimensions 159 x 121 x 85 mm  
 Quality E 1.40  
 Scope of delivery = Retention packaging with attached transport box  
 1 unit

Article code	Version
<b>FL 120904 Q</b>	NORMLine 50, PU film 50 microns
<b>FL 120904 ESQ</b>	ESDLine 50, PU film ESD 50 microns
<b>FL 120904 ECQ</b>	ECOLine 50, PE film 50 microns

Applications: controllers, displays, sensors  
 Max. product weight: up to 1000 gr.



Maximum product size: **120 x 100 x 20 mm**

### Product data

Overall dimensions 170 x 145 x 47 mm  
 Quality E 1.40  
 Scope of delivery = Retention packaging with attached transport box  
 1 unit

Article-code	Version
<b>FL 121002 Q</b>	NORMLine 50, PU Folie 50 microns
<b>FL 121002 ESQ</b>	ESDLine 50, PU Folie ESD 50 microns
<b>FL 121002 ECQ</b>	ECOLine 50, PE film 50 microns

Applications: Relay, plates  
 Max. product weight: up to 1000 gr.

The indicated max. weights are approximate values and can vary depending on the product to be shipped.

## The one-piece retention packaging



Maximum product size: **120 x 110 x 60 mm**

### Product data

Overall dimensions 160 x 136 x 109 mm

Quality E 1.40

Scope of delivery = Retention packaging with  
attached transport box  
1 unit

### Article code

### Version

**FL 121106 Q**

NORMLine 50, PU film 50 microns

**FL 121106 ESQ**

ESDLine 50, PU film ESD 50 microns

**FL 121106 ECQ**

ECOLine 50, PE film 50 microns

Applications: controllers, displays, sensors  
Max. product weight: up to 1000 gr.



Maximum product size: **140 x 90 x 30 mm**

### Product data

Overall dimensions 180 x 130 x 71 mm

Quality B 1.30

Scope of delivery = Retention packaging with  
attached transport box  
1 unit

### Article code

### Version

**FL 140903 Q**

NORMLine 50, PU film 50 microns

**FL 140903 ESQ**

ESDLine 50, PU film ESD 50 microns

**FL 140903 ECQ**

ECOLine 50, PE film 50 microns

Applications: controllers, displays, sensors  
Max. product weight: up to 1000 gr.



Maximum product size: **140 x 90 x 50 mm**

### Product data

Overall dimensions 178 x 135 x 90 mm

Quality B 1.30

Scope of delivery = Retention packaging with  
attached transport box  
1 unit

### Article code

### Version

**FL 140905 Q**

NORMLine 50, PU film 50 microns

**FL 140905 ESQ**

ESDLine 50, PU film ESD 50 microns

**FL 140905 ECQ**

ECOLine 50, PE film 50 microns

Applications: controllers, displays, sensors  
Max. product weight: up to 1000 gr.

The indicated max. weights are approximate values and can vary depending on the product to be shipped.



## The one-piece retention packaging



Maximum product size: **150 x 70 x 20 mm**

### Product data

Overall dimensions 200 x 107 x 49 mm  
 Quality E 1.50  
 Scope of delivery = Retention packaging with attached transport box  
 1 unit

Article code	Version
<b>FL 150702 Q</b>	NORMLine 50, PU film 50 microns
<b>FL 150702 ESQ</b>	ESDLine 50, PU film ESD 50 microns
<b>FL 150702 ECQ</b>	ECOLine 50, PE film 50 microns

Applications: plates, small devices, smartphones  
 Max. product weight: up to 750 gr.



Maximum product size: **150 x 130 x 50 mm**

### Product data

Overall dimensions 183 x 168 x 83 mm  
 Quality B 1.30  
 Scope of delivery = Retention packaging with attached transport box  
 1 unit

Article code	Version
<b>FL 151305 Q</b>	NORMLine 50, PU film 50 microns
<b>FL 151305 ESQ</b>	ESDLine 50, PU film ESD 50 microns
<b>FL 151305 ECQ</b>	ECOLine 50, PE film 50 microns

Applications: controllers, instruments, sensors, displays  
 Max. product weight: up to 1000 gr.



Maximum product size: **160 x 80 x 10 mm**

### Product data

Overall dimensions 195 x 110 x 50 mm  
 Quality E 1.40  
 Scope of delivery = Retention packaging with attached transport box  
 1 unit

**New!**

Article code	Version
<b>FL 160801 Q</b>	NORMLine 50, PU film 50 microns
<b>FL 160801 ESQ</b>	ESDLine 50, PU film ESD 50 microns
<b>FL 160801 ECQ</b>	ECOLine 50, PE film 50 microns

Applications: smartphones, hard drives, small devices, circuit boards  
 Max. product weight: up to 750 gr.

The indicated max. weights are approximate values and can vary depending on the product to be shipped.

## The one-piece retention packaging



Maximum product size: **180 x 110 x 50 mm**

### Product data

Overall dimensions 220 x 177 x 90 mm  
 Quality B 1.50  
 Scope of delivery = Retention packaging with attached transport box  
 1 unit

### Article code

### Version

<b>FL 181105 Q</b>	NORMLine 50, PU film 50 microns
<b>FL 181105 ESQ</b>	ESDLine 50, PU film ESD 50 microns
<b>FL 181105 ECQ</b>	ECOLine 50, PE film 50 microns

Applications: hard disk drives, disk drives, small devices, displays  
 Max. product weight: up to 2000 gr.



Maximum product size: **180 x 120 x 60 mm**

### Product data

Overall dimensions 210 x 170 x 120 mm  
 Quality E 1.40  
 Scope of delivery = Retention packaging with attached transport box  
 1 unit

### Article code

### Version

<b>FL 181206 Q</b>	NORMLine 50, PU film 50 microns
<b>FL 181206 ESQ</b>	ESDLine 50, PU film ESD 50 microns
<b>FL 181206 ECQ</b>	ECOLine 50, PE film 50 microns

Applications: small devices, instruments, displays  
 Max. product weight: up to 2000 gr.



Maximum product size: **180 x 180 x 40 mm**

### Product data

Overall dimensions 212 x 211 x 86 mm  
 Quality B 1.50  
 Scope of delivery = Retention packaging with attached transport box  
 1 unit

### Article code

### Version

<b>FL 181804 Q</b>	NORMLine 50, PU film 50 microns
<b>FL 181804 ESQ</b>	ESDLine 50, PU film ESD 50 microns
<b>FL 181804 ECQ</b>	ECOLine 50, PE film 50 microns

Applications: controllers, instruments, sensors, displays  
 Max. product weight: up to 2000 gr.

The indicated max. weights are approximate values and can vary depending on the product to be shipped.

## The one-piece retention packaging



Maximum product size: **190 x 120 x 30 mm**

### Product data

Overall dimensions 250 x 151 x 57 mm  
 Quality E 1.40  
 Scope of delivery = Retention packaging with attached transport box  
 1 unit

Article code	Version
<b>FL 191203 Q</b>	NORMLine 50, PU film 50 microns
<b>FL 191203 ESQ</b>	ESDLine 50, PU film ESD 50 microns
<b>FL 191203 ECQ</b>	ECOLine 50, PE film 50 microns

Applications: hard disk drives, small devices, printed circuit boards  
 Max. product weight: up to 1000 gr.



Maximum product size: **200 x 120 x 20 mm**

### Product data

Overall dimensions 240 x 156 x 46 mm  
 Quality E 1.40  
 Scope of delivery = Retention packaging with attached transport box  
 1 unit

Article code	Version
<b>FL 201202 Q</b>	NORMLine 50, PU film 50 microns
<b>FL 201202 ESQ</b>	ESDLine 50, PU film ESD 50 microns
<b>FL 201202 ECQ</b>	ECOLine 50, PE film 50 microns

Applications: small devices, printed circuit boards, hard disk drives  
 Max. product weight: up to 1500 gr.



Maximum product size: **200 x 160 x 30 mm**

### Product data

Overall dimensions 260 x 200 x 72 mm  
 Quality B 1.50  
 Scope of delivery = Retention packaging with attached transport box  
 1 unit

Article code	Version
<b>FL 201603 Q</b>	NORMLine 50, PU film 50 microns
<b>FL 201603 ESQ</b>	ESDLine 50, PU film ESD 50 microns
<b>FL 201603 ECQ</b>	ECOLine 50, PE film 50 microns

Applications: small devices, printed circuit boards, hard disk drives  
 Max. product weight: up to 1500 gr.

The indicated max. weights are approximate values and can vary depending on the product to be shipped.

## The one-piece retention packaging



FL 241607 Q

Maximum product size: **240 x 160 x 70 mm**

### Product data

Overall dimensions 286 x 225 x 120 mm

Quality B 1.50

Scope of delivery = Retention packaging with attached transport box  
1 unit

### Article code

### Version

**FL 241607 Q**

NORMLine 50, PU film 50 microns

**FL 241607 ESQ**

ESDLine 50, PU film ESD 50 microns

**FL 241607 ECQ**

ECOLine 50, PE film 50 microns

Applications: small devices, displays, panels  
Max. product weight: up to 2000 gr.



FL 241801 Q

Maximum product size: **240 x 180 x 10 mm**

### Product data

Overall dimensions 342 x 230 x 49 mm

Quality E 1.50

Scope of delivery = Retention packaging with attached transport box  
1 unit

### Article-code

### Version

**FL 241801 Q**

NORMLine 50, PU film 50 microns

**FL 241801 ESQ**

ESDLine 50, PU film ESD 50 microns

**FL 241801 ECQ**

ECOLine 80, PE film 80 microns

Applications: Tablet-PCs, plates  
Max. product weight: up to 1500 Gramm



FL 251805 Q

Maximum product size: **250 x 180 x 50 mm**

### Product data

Overall dimensions 303 x 253 x 85 mm

Quality B 1.50

Scope of delivery = Retention packaging with attached transport box  
1 unit

### Article code

### Version

**FL 251805 Q**

NORMLine 50, PU film 50 microns

**FL 251805 ESQ**

ESDLine 50, PU film ESD 50 microns

**FL 251805 ECQ**

ECOLine 50, PE film 50 microns

Applications: small devices, instruments, plates, displays  
Max. product weight: up to 2000 Gramm

The indicated max. weights are approximate values and can vary depending on the product to be shipped.

## The one-piece retention packaging



FL 281805 Q

Maximum product size: **280 x 180 x 50 mm**

### Product data

Overall dimensions 341 x 268 x 91 mm  
Quality B 1.50  
Scope of delivery = Retention packaging with attached transport box  
1 unit

### Article code

### Version

<b>FL 281805 Q</b>	NORMLine 50, PU film 50 microns
<b>FL 281805 ESQ</b>	ESDLine 50, PU film ESD 50 microns
<b>FL 281805 ECQ</b>	ECOLine 50, PE film 50 microns

Applications: controllers, instruments, analyzer, displays  
Max. product weight: up to 1500 gr.



FL 402503 Q

Maximum product size: **400 x 250 x 30 mm**

### Product data

Overall dimensions 466 x 305 x 76 mm  
Quality B 1.50  
Scope of delivery = Retention packaging with attached transport box  
1 unit

### Article code

### Version

<b>FL 402503 Q</b>	NORMLine 50, PU film 50 microns
<b>FL 402503 ESQ</b>	ESDLine 50, PU film ESD 50 microns
<b>FL 402503 ECQ</b>	ECOLine 50, PE film 50 microns

Applications: instruments, displays, printed circuit boards  
Max. product weight: up to 2000 gr.



# Emba-Quick® SK

The one-piece retention packaging  
with self-adhesive closure

## **Application:**

Light and flat products of up to 2.0 kg (normally),  
requiring medium level protection

## **Features:**

With transport box attached

The packaging will adapt to even the most unusual  
product contours

With self-adhesive closure

## **Advantages:**

Major storage space savings

High-speed packaging

The amount of packaging types is substantially reduced

No more closing material necessary





Now available with self-adhesive closure !

All-in-one: shipping box, protective device and sealing material

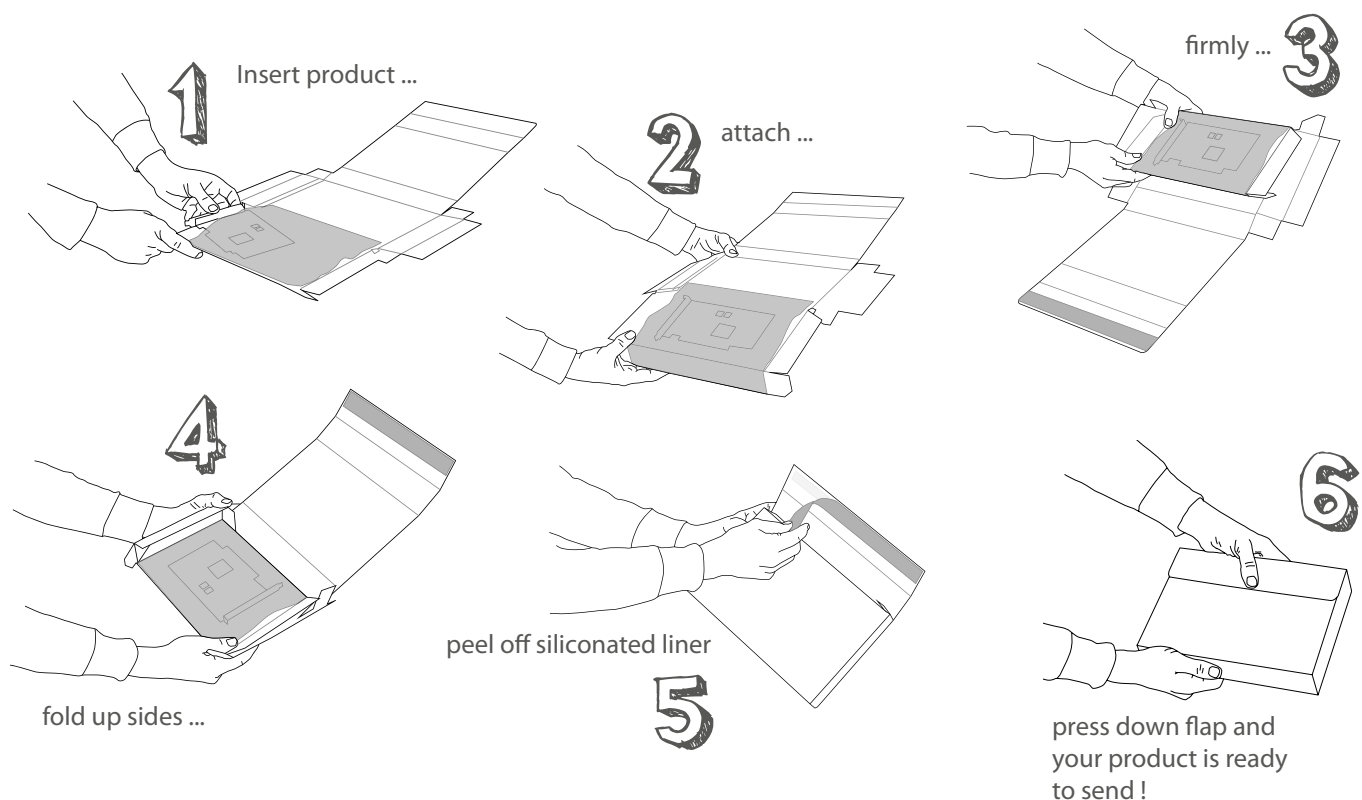
- Packed and ready to ship in 10 seconds
- No extra shipping carton necessary
- No additional sealing material necessary
- One-part system packaging
- Excellent shipping protection for your products
- Reduces process costs (procurement, storage, shipping)
- High-quality printing possible
- Environmentally friendly, as it can be disposed of along with waste paper
- Professional look



Emba-Quick® SK adapts optimally to the most varied product contours like a second skin.  
New products from your company can often be packed immediately with existing packaging sizes.

Also product accessories can be packed securely in accessory compartments or hollow bottom.  
Whether it's a manual, cables or remote controls, everything is securely fixed in position.

## The technology



Now available with self-adhesive closure !



## The immediate delivery programm

Maximum product size (mm)	Article Codes NORM- / ESD- / ECOLine	Max. product weight	Page
70 x 50 x 20 mm	FL 070502 Q- / EQ- / CQ-SK	ca. 0,4 kg	64
70 x 50 x 50 mm	FL 070505 Q- / EQ- / CQ-SK	ca. 0,8 kg	64
80 x 50 x 30 mm	FL 080503 Q- / EQ- / CQ-SK	ca. 0,8 kg	64
100 x 90 x 60 mm	FL 100906 Q- / EQ- / CQ-SK	ca. 1,0 kg	65
120 x 90 x 40 mm	FL 120904 Q- / EQ- / CQ-SK	ca. 1,0 kg	65
120 x 100 x 20 mm	FL 121002 Q- / EQ- / CQ-SK	ca. 1,0 kg	65
120 x 110 x 60 mm	FL 121106 Q- / EQ- / CQ-SK	ca. 1,0 kg	66
140 x 90 x 30 mm	FL 140903 Q- / EQ- / CQ-SK	ca. 1,0 kg	66
140 x 90 x 50 mm	FL 140905 Q- / EQ- / CQ-SK	ca. 1,0 kg	66
150 x 70 x 20 mm	FL 150702 Q- / EQ- / CQ-SK	ca. 0,8 kg	67
150 x 130 x 50 mm	FL 151305 Q- / EQ- / CQ-SK	ca. 1,0 kg	67
160 x 80 x 10 mm	FL 160801 Q- / EQ- / CQ-SK	ca. 0,7 kg	67
180 x 110 x 50 mm	FL 181105 Q- / EQ- / CQ-SK	ca. 2,0 kg	68
180 x 120 x 60 mm	FL 181206 Q- / EQ- / CQ-SK	ca. 2,0 kg	68
180 x 180 x 40 mm	FL 181804 Q- / EQ- / CQ-SK	ca. 2,0 kg	68
190 x 120 x 30 mm	FL 191203 Q- / EQ- / CQ-SK	ca. 1,0 kg	69
200 x 120 x 20 mm	FL 201202 Q- / EQ- / CQ-SK	ca. 1,5 kg	69
200 x 160 x 30 mm	FL 201603 Q- / EQ- / CQ-SK	ca. 1,5 kg	69
240 x 160 x 70 mm	FL 241607 Q- / EQ- / CQ-SK	ca. 2,0 kg	70
240 x 180 x 10 mm	FL 241801 Q- / EQ- / CQ-SK	ca. 1,5 kg	70
250 x 180 x 50 mm	FL 251805 Q- / EQ- / CQ-SK	ca. 2,0 kg	70
280 x 180 x 50 mm	FL 281805 Q- / EQ- / CQ-SK	ca. 1,5 kg	71
400 x 250 x 30 mm	FL 402503 Q- / EQ- / CQ-SK	ca. 2,0 kg	71



## The one-piece retention packaging with self-adhesive closure



FL 070502 Q SK

Maximum product size: **70 x 50 x 20 mm**

### Product data

Overall dimensions 89 x 72 x 44 mm

Quality E 1.40

Scope of delivery = Retention packaging with  
attached transport box  
self-adhesive closure  
1 unit

### Article code

### Version

**FL 070502 Q SK**

NORMLine 50, PU film 50 microns

**FL 070502 EQ SK**

ESDLine 50, PU film ESD 50 microns

**FL 070502 CQ SK**

ECOLine 50, PE film 50 microns

Applications: printed circuit boards, probes, sensors  
Max. product weight: up to 400 gr.



FL 070505 Q SK

Maximum product size: **70 x 50 x 50 mm**

### Product data

Overall dimensions 106 x 92 x 78 mm

Quality E 1.40

Scope of delivery = Retention packaging with  
attached transport box  
self-adhesive closure  
1 unit

### Article-code

### Version

**FL 070505 Q SK**

NORMLine 50, PU film 50 microns

**FL 070505 EQ SK**

ESDLine 50, PU film ESD 50 microns

**FL 070505 CQ SK**

ECOLine 50, PE film 50 microns

Applications: printed circuit boards, probes, sensors  
Max. product weight: up to 800 gr.



FL 080503 Q SK

Maximum product size: **80 x 50 x 30 mm**

### Product data

Overall dimensions 107 x 84 x 66 mm

Quality E 1.40

Scope of delivery = Retention packaging with  
attached transport box  
self-adhesive closure  
1 unit

### Article code

### Version

**FL 080503 Q SK**

NORMLine 50, PU film 50 microns

**FL 080503 EQ SK**

ESDLine 50, PU film ESD 50 microns

**FL 080503 CQ SK**

ECOLine 50, PE film 50 microns

Applications: printed circuit boards, probes, sensors  
Max. product weight: up to 800 gr.

The indicated max. weights are approximate values and can vary depending on the product to be shipped.



## The one-piece retention packaging with self-adhesive closure



Maximum product size: **100 x 90 x 60 mm**

### Product data

Overall dimensions 132 x 136 x 102 mm  
 Quality B 1.30  
 Scope of delivery = Retention packaging with  
 attached transport box  
 self-adhesive closure  
 1 unit

Article code	Version
<b>FL 100906 Q SK</b>	NORMLine 50, PU film 50 microns
<b>FL 100906 EQ SK</b>	ESDLine 50, PU film ESD 50 microns
<b>FL 100906 CQ SK</b>	ECOLine 50, PE film 50 microns

Applications: controllers, displays, sensors  
 Max. product weight: up to 1000 gr.



Maximum product size: **120 x 90 x 40 mm**

### Product data

Overall dimensions 159 x 121 x 85 mm  
 Quality E 1.40  
 Scope of delivery = Retention packaging with  
 attached transport box  
 self-adhesive closure  
 1 unit

Article-code	Version
<b>FL 120904 Q SK</b>	NORMLine 50, PU film 50 microns
<b>FL 120904 EQ SK</b>	ESDLine 50, PU film ESD 50 microns
<b>FL 120904 CQ SK</b>	ECOLine 50, PE film 50 microns

Applications: controllers, displays, sensors  
 Max. product weight: up to 1000 gr.



Maximum product size: **120 x 100 x 20 mm**

### Product data

Overall dimensions 170 x 145 x 47 mm  
 Quality E 1.40  
 Scope of delivery = Retention packaging with  
 attached transport box  
 self-adhesive closure  
 1 unit

Article code	Version
<b>FL 121002 Q SK</b>	NORMLine 50, PU film 50 microns
<b>FL 121002 EQ SK</b>	ESDLine 50, PU film ESD 50 microns
<b>FL 121002 CQ SK</b>	ECOLine 50, PE film 50 microns

Applications: Relay, plates  
 Max. product weight: up to 1000 gr.

The indicated max. weights are approximate values and can vary depending on the product to be shipped.

The one-piece retention packaging with self-adhesive closure



Maximum product size: **120 x 110 x 60 mm**

## Product data

Overall dimensions 160 x 136 x 109 mm  
 Quality E 1.40  
 Scope of delivery = Retention packaging with  
 attached transport box  
 self-adhesive closure  
 1 unit

## Article code

## Version

<b>FL 121106 Q SK</b>	NORMLine 50, PU film 50 microns
<b>FL 121106 EQ SK</b>	ESDLine 50, PU film ESD 50 microns
<b>FL 121106 CQ SK</b>	ECOLine 50, PE film 50 microns

Applications: controllers, displays, sensors  
 Max. product weight: up to 1000 gr.



Maximum product size: **140 x 90 x 30 mm**

## Product data

Overall dimensions 180 x 130 x 71 mm  
 Quality B 1.30  
 Scope of delivery = Retention packaging with  
 attached transport box  
 self-adhesive closure  
 1 unit

## Article-code

## Version

<b>FL 140903 Q SK</b>	NORMLine 50, PU film 50 microns
<b>FL 140903 EQ SK</b>	ESDLine 50, PU film ESD 50 microns
<b>FL 140903 CQ SK</b>	ECOLine 80, PE film 80 microns

Applications: controllers, displays, sensors  
 Max. product weight: up to 1000 gr.



Maximum product size: **140 x 90 x 50 mm**

## Product data

Overall dimensions 178 x 135 x 90 mm  
 Quality B 1.30  
 Scope of delivery = Retention packaging with  
 attached transport box  
 self-adhesive closure  
 1 unit

## Article code

## Version

<b>FL 140905 Q SK</b>	NORMLine 50, PU film 50 microns
<b>FL 140905 EQ SK</b>	ESDLine 50, PU film ESD 50 microns
<b>FL 140905 CQ SK</b>	ECOLine 50, PE film 50 microns

Applications: controllers, displays, sensors  
 Max. product weight: up to 1000 gr.

The indicated max. weights are approximate values and can vary depending on the product to be shipped.

The one-piece retention packaging with self-adhesive closure



Maximum product size: **150 x 70 x 20 mm**

## Product data

Overall dimensions 200 x 107 x 49 mm  
 Quality E 1.50  
 Scope of delivery = Retention packaging with  
 attached transport box  
 self-adhesive closure  
 1 unit

Article code	Version
<b>FL 150702 Q SK</b>	NORMLine 50, PU film 50 microns
<b>FL 150702 EQ SK</b>	ESDLine 50, PU film ESD 50 microns
<b>FL 150702 CQ SK</b>	ECOLine 50, PE film 50 microns

Applications: plates, small devices  
 Max. product weight: up to 750 gr.



Maximum product size: **150 x 130 x 50 mm**

## Product data

Overall dimensions 183 x 168 x 83 mm  
 Quality B 1.30  
 Scope of delivery = Retention packaging with  
 attached transport box  
 self-adhesive closure  
 1 unit

Article-code	Version
<b>FL 151305 Q SK</b>	NORMLine 50, PU film 50 microns
<b>FL 151305 EQ SK</b>	ESDLine 50, PU film ESD 50 microns
<b>FL 151305 CQ SK</b>	ECOLine 50, PE film 50 microns

Applications: controllers, instruments, sensors, displays  
 Max. product weight: up to 1000 gr.



Maximum product size: **160 x 80 x 10 mm**

## Product data

Overall dimensions 195 x 110 x 50 mm  
 Quality E 1.40  
 Scope of delivery = Retention packaging with  
 attached transport box  
 self-adhesive closure  
 1 unit

Article code	Version
<b>FL 160801 Q SK</b>	NORMLine 50, PU film 50 microns
<b>FL 160801 EQ SK</b>	ESDLine 50, PU film ESD 50 microns
<b>FL 160801 CQ SK</b>	ECOLine 50, PE film 50 microns

Applications: smartphones, hard drives, small devices, circuit boards  
 Max. product weight: up to 750 gr.

The indicated max. weights are approximate values and can vary depending on the product to be shipped.

## The one-piece retention packaging with self-adhesive closure



Maximum product size: **180 x 110 x 50 mm**

### Product data

Overall dimensions 220 x 177 x 90 mm  
 Quality B 1.50  
 Scope of delivery = Retention packaging with  
 attached transport box  
 self-adhesive closure  
 1 unit

Article code	Version
<b>FL 181105 Q SK</b>	NORMLine 50, PU film 50 microns
<b>FL 181105 EQ SK</b>	ESDLine 50, PU film ESD 50 microns
<b>FL 181105 CQ SK</b>	ECOLine 50, PE film 50 microns

Applications: hard disk drives, disk drives, small devices, displays  
 Max. product weight: up to 2000 gr.



Maximum product size: **180 x 120 x 60 mm**

### Product data

Overall dimensions 210 x 170 x 120 mm  
 Quality E 1.40  
 Scope of delivery = Retention packaging with  
 attached transport box  
 self-adhesive closure  
 1 unit

Article-code	Version
<b>FL 181206 Q SK</b>	NORMLine 50, PU film 50 microns
<b>FL 181206 EQ SK</b>	ESDLine 50, PU film ESD 50 microns
<b>FL 181206 CQ SK</b>	ECOLine 50, PE film 50 microns

Applications: small devices, instruments, displays  
 Max. product weight: up to 2000 gr.



Maximum product size: **180 x 180 x 40 mm**

### Product data

Overall dimensions 212 x 211 x 86 mm  
 Quality B 1.50  
 Scope of delivery = Retention packaging with  
 attached transport box  
 self-adhesive closure  
 1 unit

Article code	Version
<b>FL 181804 Q SK</b>	NORMLine 50, PU film 50 microns
<b>FL 181804 EQ SK</b>	ESDLine 50, PU film ESD 50 microns
<b>FL 181804 CQ SK</b>	ECOLine 50, PE film 50 microns

Applications: controllers, instruments, sensors, displays  
 Max. product weight: up to 2000 gr.

The indicated max. weights are approximate values and can vary depending on the product to be shipped.

## The one-piece retention packaging with self-adhesive closure



Maximum product size: **190 x 120 x 30 mm**

### Product data

Overall dimensions 250 x 151 x 57 mm  
 Quality E 1.40  
 Scope of delivery = Retention packaging with attached transport box self-adhesive closure  
 1 unit

Article code	Version
<b>FL 191203 Q SK</b>	NORMLine 50, PU film 50 microns
<b>FL 191203 EQ SK</b>	ESDLine 50, PU film ESD 50 microns
<b>FL 191203 CQ SK</b>	ECOLine 50, PE film 50 microns

Applications: hard disk drives, small devices, printed circuit boards  
 Max. product weight: up to 1000 gr.



Maximum product size: **200 x 120 x 20 mm**

### Product data

Overall dimensions 240 x 156 x 46 mm  
 Quality E 1.40  
 Scope of delivery = Retention packaging with attached transport box self-adhesive closure  
 1 unit

Article-code	Version
<b>FL 201202 Q SK</b>	NORMLine 50, PU film 50 microns
<b>FL 201202 EQ SK</b>	ESDLine 50, PU film ESD 50 microns
<b>FL 201202 CQ SK</b>	ECOLine 50, PE film 50 microns

Applications: small devices, printed circuit boards, hard disk drives  
 Max. product weight: up to 1500 gr.



Maximum product size: **200 x 160 x 30 mm**

### Product data

Overall dimensions 260 x 200 x 72 mm  
 Quality B 1.50  
 Scope of delivery = Retention packaging with attached transport box self-adhesive closure  
 1 unit

Article code	Version
<b>FL 201603 Q SK</b>	NORMLine 50, PU film 50 microns
<b>FL 201603 EQ SK</b>	ESDLine 50, PU film ESD 50 microns
<b>FL 201603 CQ SK</b>	ECOLine 50, PE film 50 microns

Applications: small devices, printed circuit boards, hard disk drives  
 Max. product weight: up to 1500 gr.

The indicated max. weights are approximate values and can vary depending on the product to be shipped.



## The one-piece retention packaging with self-adhesive closure



FL 241607 Q SK

Maximum product size: **240 x 160 x 70 mm**

### Product data

Overall dimensions 286 x 225 x 120 mm

Quality B 1.50

Scope of delivery = Retention packaging with  
attached transport box  
self-adhesive closure  
1 unit

### Article code

### Version

**FL 241607 Q SK**

NORMLine 50, PU film 50 microns

**FL 241607 EQ SK**

ESDLine 50, PU film ESD 50 microns

**FL 241607 CQ SK**

ECOLine 50, PE film 50 microns

Applications: small devices, displays, panels  
Max. product weight: up to 2000 gr.



FL 241801 Q SK

Maximum product size: **240 x 180 x 10 mm**

### Product data

Overall dimensions 342 x 230 x 49 mm

Quality E 1.50

Scope of delivery = Retention packaging with  
attached transport box  
self-adhesive closure  
1 unit

### Article-code

### Version

**FL 241801 Q SK**

NORMLine 50, PU film 50 microns

**FL 241801 EQ SK**

ESDLine 50, PU film ESD 50 microns

**FL 241801 CQ SK**

ECOLine 80, PE film 80 microns

Applications: Tablet-PCs, plates  
Max. product weight: up to 1500 Gramm



FL 251805 Q SK

Maximum product size: **250 x 180 x 50 mm**

### Product data

Overall dimensions 303 x 253 x 85 mm

Quality B 1.50

Scope of delivery = Retention packaging with  
attached transport box  
self-adhesive closure  
1 unit

### Article code

### Version

**FL 251805 Q SK**

NORMLine 50, PU film 50 microns

**FL 251805 EQ SK**

ESDLine 50, PU film ESD 50 microns

**FL 251805 CQ SK**

ECOLine 50, PE film 50 microns

Applications: small devices, instruments, plates, displays  
Max. product weight: up to 2000 Gramm

The indicated max. weights are approximate values and can vary depending on the product to be shipped.

The one-piece retention packaging with self-adhesive closure



Maximum product size: **280 x 180 x 50 mm**

## Product data

Overall dimensions 341 x 268 x 91 mm  
 Quality B 1.50  
 Scope of delivery = Retention packaging with  
 attached transport box  
 self-adhesive closure  
 1 unit

Article code	Version
<b>FL 281805 Q SK</b>	NORMLine 50, PU film 50 microns
<b>FL 281805 EQ SK</b>	ESDLine 50, PU film ESD 50 microns
<b>FL 281805 CQ SK</b>	ECOLine 50, PE film 50 microns

Applications: controllers, instruments, analyzer, displays  
 Max. product weight: up to 1500 gr.



Maximum product size: **400 x 250 x 30 mm**

## Product data

Overall dimensions 466 x 305 x 76 mm  
 Quality B 1.50  
 Scope of delivery = Retention packaging with  
 attached transport box  
 self-adhesive closure  
 1 unit

Article-code	Version
<b>FL 402503 Q SK</b>	NORMLine 50, PU film 50 microns
<b>FL 402503 EQ SK</b>	ESDLine 50, PU film ESD 50 microns
<b>FL 402503 CQ SK</b>	ECOLine 50, PE film 50 microns

Applications: instruments, displays, printed circuit boards  
 Max. product weight: up to 2000 gr.



# Suspension Packaging

best protection of fragile goods  
of up to 35.0 Kg  
**Emba-Swing®**

transported „floating on air“  
reusable  
protection against shock and vibration  
storage space reduction  
quick handling



# Emba-Swing<sup>®</sup>

The Suspension Packaging





**Application:**

Fragile goods of up to 35.0 kg.

**Features:**

The product is suspended between two cushions during the transport.

Reusable packaging system.

**Advantages:**

Highest protection level against shock and vibration.

Storage space reduction as the packaging can quickly be set upright.

## The suspension packaging

### Emba-Swing® The suspension packaging

- high-level protection for fragile products against shock and vibration
- products are transported as if they were "floating on air"
- quick handling
- storage space reduction compared with foam solutions
- reduction of process costs (procurement, storing, shipment)
- reusable
- environment-friendly, can be disposed of with waste paper
- professional appearance
- economical due to standard program (no tool costs)



### The method

The highly flexible but practically tear-free stretch film clings perfectly to the different product contours. Clamping between two suspension

cushions means that the product will be stored as if it was "floating on air" during the transport. Even if the box is dropped on its side walls the product will remain in position.



### Application examples

Emba-Swing® adapts optimally to the most varied product contours like a second skin. New products from your company can often be packed immediately with existing packaging sizes. Also products of different sizes fit into the same-sized packaging solution.

Also product accessories can be packed securely in accessory compartments. Whether it's a manual, cables or remote controls, everything is securely fixed in position.

In addition to our immediate delivery program listed in the table below we also offer existing special packaging as well as new developments according to your individual needs.



### The immediate delivery program

Maximum product surface (mm)	Article code	Height of cushion	Max. product weight	Page
120 x 70 mm	SW 120750	50 mm	ca. 3,0 kg	78
130 x 130 mm	SW 131340	40 mm	ca. 1,0 kg	78
160 x 100 mm	SN 161003	30 mm	ca. 1,0 kg	78
170 x 170 mm	SW 171770	70 mm	ca. 3,0 kg	79
190 x 150 mm	SW 191560	60 mm	ca. 3,0 kg	79
200 x 100 mm	SW 201050	50 mm	ca. 1,5 kg	79
200 x 110 mm	SW 201140	40 mm	ca. 1,5 kg	80
240 x 150 mm	SW 241560	60 mm	ca. 2,0 kg	80
250 x 180 mm	SW 251880	80 mm	ca. 4,0 kg	80
250 x 250 mm	SW 252560	60 mm	ca. 5,0 kg	81
280 x 180 mm	SW 281880	80 mm	ca. 6,0 kg	81
280 x 230 mm	SW 282380	80 mm	ca. 8,0 kg	81
290 x 270 mm	SW 292790	90 mm	ca. 10 kg	82
300 x 70 mm	SN 300760	60 mm	ca. 2,0 kg	82
300 x 200 mm	SW 302060	60 mm	ca. 6,0 kg	82
300 x 200 mm	SW 302080	80 mm	ca. 10 kg	83
300 x 300 mm	SW 303070	70 mm	ca. 7,0 kg	83
340 x 330 mm	SW 3433100	100 mm	ca. 15 kg	83
400 x 300 mm	SW 4030100	100 mm	ca. 15 kg	84
450 x 440 mm	SW 454490	90 mm	ca. 12 kg	84
450 x 440 mm	SW 4544180	180 mm	ca. 30 kg	84
460 x 460 mm	SW 4646150	150 mm	ca. 20 kg	85
500 x 300 mm	SW 5030120	120 mm	ca. 20 kg	85
500 x 400 mm	SW 5040160	160 mm	ca. 25 kg	85
500 x 500 mm	SW 5050160	160 mm	ca. 30 kg	86

Available in sets of 50 and more (2 cushions, 1 box). Special sizes on request.  
All boxes have additional adjustable heights. For modification requests call us.

## The suspension packaging



Max. product surface : **120 x 70 mm**

### Product data

Overall transport box dimensions

208 x 158 x 117 mm

Fefco 0201 slotted-type box with top and bottom flaps  
Quality B 1.30

Scope of delivery = Suspension cushion 2 units, Transport box 1 unit

### Article-code

### Version

**SW 120750 S**

NORMLine 50, PU Folie 50 microns

**SW 120750 ESDS**

ESDLine 50, PU Folie ESD 50 microns

**SW 120750 EC6S**

ECOLine, PE Folie 60 microns

Applications: Sensors, displays, small devices

Max. product weight: up to 3 kg



Max. product surface : **130 x 130 mm**

### Product data

Overall transport box dimensions

200 x 200 x 104 mm

Fefco 0201 slotted-type box with top and bottom flaps  
Quality C 1.30

Scope of delivery = Suspension cushion 2 units,  
Transport box 1 unit

### Article-code

### Version

**SW 131340 S**

NORMLine 50, PU film 50 microns

**SW 131340 ESDS**

ESDLine 50, PU film ESD 50 microns

**SW 131340 EC8S**

ECOLine, PE film 80 microns

Applications: small devices, instruments, displays

Max. product weight: up to 1.0 kg



Max. product surface : **160 x 100 x 30 mm**

### Product data

Overall transport box dimensions

242 x 172 x 78 mm

Fefco 0211 tuck-lid folding box  
Quality E 1.20

Scope of delivery = Clam shell 1 unit,  
Transport box 1 unit

### Article-code

### Version

**SN 161003 S**

NORMLine 75, PU film 75 microns

**SN 161003 ESDS**

ESDLine 75, PU film ESD 75 microns

Applications: small devices, printed circuit boards

Max. product weight: up to 1.0 kg

The indicated max. weights are approximate values and can vary depending on the product to be shipped.



## The suspension packaging



SW 171770

Max. product surface : **170 x 170 mm**

### Product data

Overall transport box dimension

236 x 226 x 230 / 190 / 150 mm

Fefco 0201 slotted-type box with top and bottom flaps and additional crease for height of 40 mm, Quality B 1.30

Scope of delivery = Suspension cushion 2 units, Transport box 1 unit

Article-code	Version
<b>SW 171770 S</b>	NORMLine 75, PU film 75 microns
<b>SW 171770 ESDS</b>	ESDLine 75, PU film ESD 75 microns
<b>SW 171770 EC8S</b>	ECOLine, PE film 80 microns
<b>SW 171770 MS</b>	MAXILine 100, PU 100 microns

Applications: small devices, displays, panels, mechatronics  
Max. product weight: up to 3 kg



SW 191560

Max. product surface : **190 x 150 mm**

### Product data

Overall transport box dimension

311 x 256 x 187 / 137 mm

Fefco 0201 slotted-type box with top and bottom flaps and additional crease for height of 50 mm, Quality B 1.30

Scope of delivery = Suspension cushion 2 units, Transport box 1 unit

Article-code	Version
<b>SW 191560 S</b>	NORMLine 75, PU film 75 microns
<b>SW 191560 ESDS</b>	ESDLine 75, PU film ESD 75 microns
<b>SW 191560 EC8S</b>	ECOLine, PE film 80 microns
<b>SW 191560 MS</b>	MAXILine 125, PU 125 microns

Applications: small devices, displays, panels, mechatronics  
Max. product weight: up to 3 kg



SW 201050

Max. product surface : **200 x 100 mm**

### Product data

Overall transport box dimension 287x185x194/120mm

Fefco 0201 slotted-type box with top and bottom flaps and additional crease for height of 70 mm,

Quality C 1.30, Scope of delivery = Suspension cushion 2 units, Transport box 1 unit

Article-code	Version
<b>SW 201050 S</b>	NORMLine 75, PU film 75 microns
<b>SW 201050 ESDS</b>	ESDLine 75, PU film ESD 75 microns
<b>SW 201050 EC8S</b>	ECOLine, PE film 80 microns

Applications: small devices, displays, panels, mechatronics  
Max. product weight: up to 1.5 kg

The indicated max. weights are approximate values and can vary depending on the product to be shipped.



## The suspension packaging



Max. product surface : **200 x 110 mm**

### Product data

Overall transport box dimension 300x200x150/100mm  
Fefco 0201 slotted-type box with top and bottom flaps and additional crease of 50 mm,  
Quality C 1.30  
Scope of delivery = Suspension cushion 2 units,  
Transport box 1 unit

### Article-code

### Version

<b>SW 201140 S</b>	NORMLine 75, PU film 75 microns
<b>SW 201140 ESDS</b>	ESDLine 75, PU film ESD 75 microns
<b>SW 201140 EC8S</b>	ECOLine, PE film 80 microns

Applications: small devices, displays, mechatronics  
Max. product weight: up to 1.5 kg



Max. product surface : **240 x 150 mm**

### Product data

Overall transport box dimension 324x234x194/144mm  
Fefco 0201 slotted-type box with top and bottom flaps and additional crease of 50 mm,  
Quality C 1.30  
Scope of delivery = Suspension cushion 2 units,  
Transport box 1 unit

### Article-code

### Version

<b>SW 241560 S</b>	NORMLine 75, PU film 75 microns
<b>SW 241560 ESDS</b>	ESDLine 75, PU film ESD 75 microns
<b>SW 241560 EC8S</b>	ECOLine, PE film 80 microns

Applications: disk drives, small devices, displays, mechatronics  
Max. product weight: up to 2.0 kg



Max. product surface : **250 x 180 mm**

### Product data

Overall transport box dimension 340x300x246/196mm  
Fefco 0201 slotted-type box with top and bottom flaps and additional crease of 50 mm,  
Quality C 1.30  
Scope of delivery = Suspension cushion 2 units,  
Transport box 1 unit

### Article-code

### Version

<b>SW 251880 S</b>	NORMLine 100, PU film 100 microns
<b>SW 251880 ESDS</b>	ESDLine 100, PU film ESD 100 microns
<b>SW 251880 ESDS</b>	MAXILine 150, PU film 150 microns

Applications: GPS units, 1 and 2 DIN car audio units, instruments.  
Max. product weight: up to 4.0 kg

The indicated max. weights are approximate values and can vary depending on the product to be shipped.

## The suspension packaging



SW 252560

Max. product surface : **250 x 250 mm**

### Product data

Overall transport box dimension 334x334x218/148mm  
Fefco 0201 slotted-type box with top and bottom flaps and additional crease of 70 mm,  
Quality C 1.30  
Scope of delivery = Suspension cushion 2 units,  
Transport box 1 unit

Article-code	Version
<b>SW 252560 S</b>	NORMLine 100, PU film 100 microns
<b>SW 252560 ESDS</b>	ESDLine 100, PU film ESD 100 microns
<b>SW 252560 EC8S</b>	ECOLine, PE film 80 microns
<b>SW 252560 MS</b>	MAXILine 150, PU film 150 microns

Applications: small devices, displays, panels, mechatronics  
Max. product weight: up to 5.0 kg



SW 281880

Max. product surface : **280 x 180 mm**

### Product data

Overall transport box dimension  
364 x 247 x 256 / 216 / 176 mm  
Fefco 0201 slotted-type box with top and bottom flaps and additional crease of 40 mm, Quality C 1.30  
Scope of delivery = Suspension cushion 2 units, transport box 1 unit

Article-code	Version
<b>SW 281880 S</b>	NORMLine 100, PU film 100 microns
<b>SW 281880 ESDS</b>	ESDLine 100, PU film ESD 100 microns
<b>SW 281880 EC8S</b>	ECOLine, PE film 80 microns
<b>SW 281880 MS</b>	MAXILine 150, PU film 150 microns

Applications: small devices, panels, mechatronics  
Max. product weight: up to 6 kg



SW 282380

Max. product surface : **280 x 230 mm**

### Product data

Overall transport box dimension 422x334x288/208mm  
Fefco 0201 folding box with base, cover flaps and additional crease of 80 mm,  
Quality BC 2.30  
Scope of delivery = Suspension cushion 2 units,  
Transport box 1 unit

Article-code	Version
<b>SW 282380 S</b>	NORMLine 100, PU film 100 microns
<b>SW 282380 ESDS</b>	ESDLine 100, PU film ESD 100 microns
<b>SW 282380 MS</b>	MAXILine, PU film 150 microns

Applications: small devices, displays, panels, mechatronics  
Max. product weight: up to 8.0 kg

The indicated max. weights are approximate values and can vary depending on the product to be shipped.

## The suspension packaging



SW 292790

Max. product surface : **290 x 270 mm**

### Product data

Overall transport box dimension

472 x 439 x 398 / 308 / 218 mm

Fefco 0201 slotted-type box with top and bottom flaps and additional crease of 2 x 90 mm, Quality BC 2.30

Scope of delivery = Suspension cushion 2 units, Transport box 1 unit

### Article-code

### Version

**SW 292790 S**

NORMLine 100, PU film 100 microns

**SW 292790 ESDS**

ESDLine 100, PU film ESD 100 microns

**SW 292790 MS**

MAXILine 150, PU film 150 microns

Applications: devices, panels

Max. product weight: up to 10.0 kg



SN 300760

Max. product surface : **300 x 70 x 60 mm**

### Product data

Overall transport box dimension

152 x 142 x 380 mm

efco 0201 slotted-type box with top and bottom flaps Quality B 1.40

Scope of delivery = Clam Shell 1 unit, Transport box 1 unit

### Article-code

### Version

**SN 300760 S**

NORMLine 75, PU film 75 microns

**SN 300760 ESDS**

ESDLine 75, PU film ESD 75 microns

**SN 300760 EC8S**

ECOLine 80, PE film 80 microns

Applications: Wine bottle, analyzer

Max. product weight: up to 2 kg

**Module dimensions  
for pallets!**



SW 302060

Max. product surface : **300 x 200 mm**

### Product data

Overall transport box dimension

400 x 300 x 270-158 mm

Fefco 0201 slotted-type box with top and bottom flaps and 3 additional creases, Quality BC 2.20

Scope of delivery = Suspension cushion 2 units, Transport box 1 unit

### Article-code

### Version

**SW 302060 S**

NORMLine 100, PU film 100 microns

**SW 302060 ESDS**

ESDLine 100, PU film ESD 100 microns

**SW 302060 EC8S**

ECOLine, PE film 80 microns

**SW 302060 MS**

MAXILine 150, PU film 150 microns

Applications: small devices, mechatronics

Max. product weight: up to 6.0 kg

The indicated max. weights are approximate values and can vary depending on the product to be shipped.

## The suspension packaging

**Module dimensions  
for pallets!**



SW 302080

Max. product surface : **300 x 200 mm**

### Product data

Overall transport box dimension  
400 x 300 x 270 - 158 mm  
Fefco 0201 slotted-type box with top and bottom flaps  
and 3 additional creases,  
Quality BC 2.20  
Scope of delivery = Suspension cushion 2 units,  
Transport box 1 unit

Article-code	Version
<b>SW 302080 S</b>	NORMLine 100, PU film 100 microns
<b>SW 302080 ESDS</b>	ESDLine 100, PU film ESD 100 microns
<b>SW 302080 EC8S</b>	ECOLine, PE film 80 microns
<b>SW 302080 MS</b>	MAXILine 150, PU film 150 microns

Applications: small devices, mechatronics, drives  
Max. product weight: up to 10.0 kg

**Module dimensions  
for pallets!**



SW 303070

Max. product surface : **300 x 300 mm**

### Product data

Overall transport box dimension  
387 x 387 x 338 / 258 / 178 mm  
Fefco 0201 slotted-type box with top and bottom flaps  
and additional crease of 2 x 80 mm,  
Quality BC 2.30  
Scope of delivery = Suspension cushion 2 units,  
Transport box 1 unit

Article-code	Version
<b>SW 303070 S</b>	NORMLine 100, PU film 100 microns
<b>SW 303070 ESDS</b>	ESDLine 100, PU film ESD 100 microns
<b>SW 303070 EC8S</b>	ECOLine, PE film 80 microns
<b>SW 303070 MS</b>	MAXILine 150, PU film 150 microns

Applications: small devices, panels, mechatronics  
Max. product weight: up to 7.0 kg



SW 3433100

Max. product surface : **340 x 330 mm**

### Product data

Overall transport box dimension 506x486x330/240 mm  
Fefco 0201 slotted-type box with top and bottom flaps  
and additional crease of 90 mm,  
Quality BC 2.30  
Scope of delivery = Suspension cushion 2 units,  
Transport box 1 unit

Article-code	Version
<b>SW 3433100 S</b>	NORMLine 100, PU film 100 microns
<b>SW 3433100 ESDS</b>	ESDLine 100, PU film ESD 100 microns
<b>SW 3433100 MS</b>	MAXILine 150, PU film 150 microns

Applications: devices, mechatronics  
Max. product weight: up to 15.0 kg

The indicated max. weights are approximate values and can vary depending on the product to be shipped.



## The suspension packaging



Max. product surface : **400 x 300 mm**

### Product data

Overall transport box dimension 500x400x330/285/240mm  
Fefco 0201 slotted-type box with top and bottom flaps  
and additional crease of 2 x 45 mm,  
Quality BC 2.30  
Scope of delivery = Suspension cushion 2 units,  
Transport box 1 unit

### Article-code

### Version

**SW 4030100 S**

NORMLine 100, PU film 100 microns

**SW 4030100 ESDS**

ESDLine 100, PU film ESD 100 microns

**SW 4030100 MS**

MAXILine 150, PU film 150 microns

Applications: devices, mechatronics  
Max. product weight: up to 15.0 kg



Max. product surface : **450 x 440 mm**

### Product data

Overall transport box dimensions  
597 x 534 x 228 mm  
Fefco 0201 slotted-type box with top and bottom flaps  
Quality BC 2.40  
Scope of delivery = Suspension cushion 2 units,  
Transport box 1 unit

### Article-code

### Version

**SW 454490 S**

NORMLine 100, PU film 100 microns

**SW 454490 ESDS**

ESDLine 100, PU film ESD 100 microns

**SW 454490 MS**

MAXILine, PU film 150 microns

Applications: devices, panels, mechatronics  
Max. product weight: up to 12.0 kg



Max. product surface: **450 x 440 mm**

### Product data

Overall transport box dimension  
597 x 534 x 598 / 498 / 398 mm  
Fefco 0201 slotted-type box with top and bottom flaps  
and additional creases of 2 x 100 mm,  
Quality BC 2.40  
Scope of delivery = Suspension cushion 2 units,  
Transport box 1 unit

### Article-code

### Version

**SW 4544180 S**

NORMLine 100, PU film 100 microns

**SW 4544180 ESDS**

ESDLine 100, PU film ESD 100 microns

**SW 4544180 MS**

MAXILine 150, PU film 150 microns

Applications: 17" CRT monitors, instruments, mechatronics  
Max. product weight: up to 30.0 kg

The indicated max. weights are approximate values and can vary depending on the product to be shipped.



## The suspension packaging



SW 4646150

Max. product surface : **460 x 460 mm**

### Product data

Overall transport box dimensions  
610 x 568 x 328 mm  
Fefco 0201 slotted-type box with top and bottom flaps  
Quality BC 2.30  
Scope of delivery = Suspension cushion 2 units,  
Transport box 1 unit

### Article-code

### Version

**SW 4646150 S**

NORMLine 100, PU film 100 microns

**SW 4646150 ESDS**

ESDLine 100, PU film ESD 100 microns

**SW 4646150 MS**

MAXILine 150, PU film 150 microns

Applications: displays up to 19", instruments  
Max. product weight: up to 20.0 kg



SW 5030120

Max. product surface : **500 x 300 mm**

### Product data

Overall transport box dimension  
644 x 404 x 483 / 433 / 383 / 333 / 283 mm  
Fefco 0201 slotted-type box with top and bottom flaps  
and additional creases of 4 x 50 mm,  
Quality BC 2.40  
Scope of delivery = Suspension cushion 2 units,  
Transport box 1 unit

### Article-code

### Version

**SW 5030120 S**

NORMLine 100, PU film 100 microns

**SW 5030120 ESDS**

ESDLine 100, PU film ESD 100 microns

**SW 5030120 MS**

MAXILine 150, PU film 150 microns

Applications: 19" devices, control panels, instruments  
Max. product weight: up to 20.0 kg



SW 5040160

Max. product surface : **500 x 400 mm**

### Product data

Overall transport box dimension  
648 x 504 x 558 / 508 / 458 / 408 / 358 mm  
Fefco 0201 slotted-type box with top and bottom flaps  
and additional creases of 4 x 50 mm,  
Quality BC 2.40  
Scope of delivery = Suspension cushion 2 units,  
Transport box 1 unit

### Article-code

### Version

**SW 5040160 S**

NORMLine 100, PU film 100 microns

**SW 5040160 ESDS**

ESDLine 100, PU film ESD 100 microns

**SW 5040160 MS**

MAXILine, PU film 150 microns

Applications: 19" devices, instruments  
Max. product weight: up to 25.0 kg

The indicated max. weights are approximate values and can vary depending on the product to be shipped.



SW 5050160

Max. product surface : **500 x 500 mm**

#### Product data

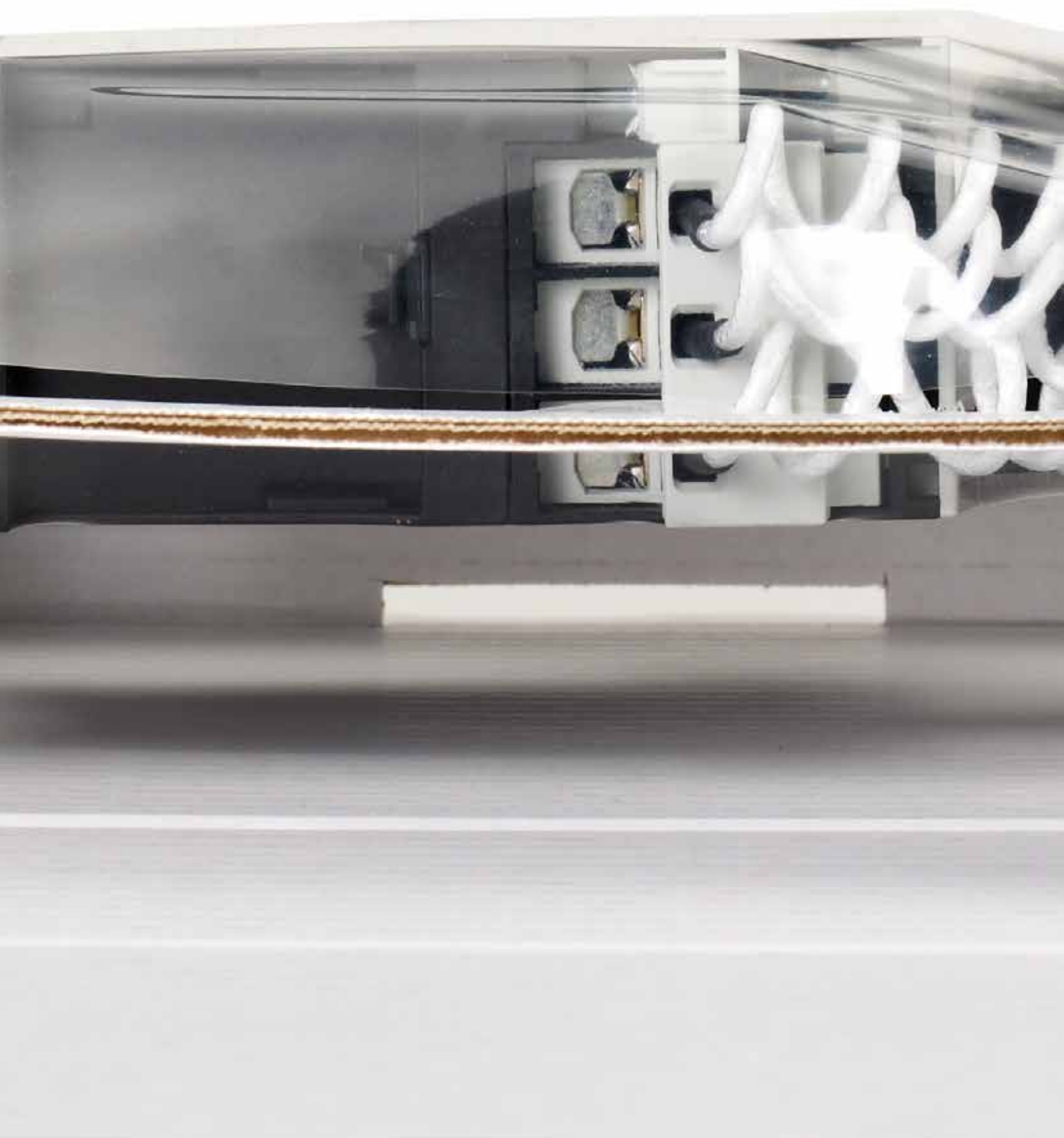
Overall transport box dimension  
648 x 604 x 558 / 508 / 458 / 408 / 358 mm  
Fefco 0201 slotted-type box with top and bottom flaps  
and additional creases of 4 x 50 mm,  
Quality BC 2.50  
Scope of delivery = Suspension cushion 2 units,  
Transport box 1 unit

Article-code	Version
<b>SW 5050160 S</b>	NORMLine 100, PU film 100 microns
<b>SW 5050160 ESDS</b>	ESDLine 100, PU film ESD 100 microns
<b>SW 5050160 MS</b>	MAXILine 150, PU film 150 microns

Applications: 19" to 21" CRT monitors, instruments, mechatronics  
Max. product weight: up to 30.0 kg



Attention: Here comes  
something special !



# Emba-One®

## Different Products - One Solution

### The best from 2 systems combined !

Different Products

hybrid  
fixing  
cushioning  
suspended transport

Emba-One® OneSolution

reusable  
fast, simple packaging  
protection against shocks / vibrations  
reduction of storage costs  
product cushioning / fixing at the same time



# Emba-One<sup>®</sup>

Different Products - One Solution

The best from 2 systems combined !





## **Properties**

- Product cushioning and product fixing at the same time
- Perfectly adapts to various product contours and heights
- Suspended transport
- Only one inner component necessary
- Also with attached transport box possible

## **Benefits**

- Reduction in the variety of packaging
- Replaces expensive cushion systems
- Reusable packaging system
- Offers high protection against shocks and vibrations

## **Uses**

- Reduction of labour costs
- Reduction of storage costs
- A solution for lots of products
- Reduce packaging costs

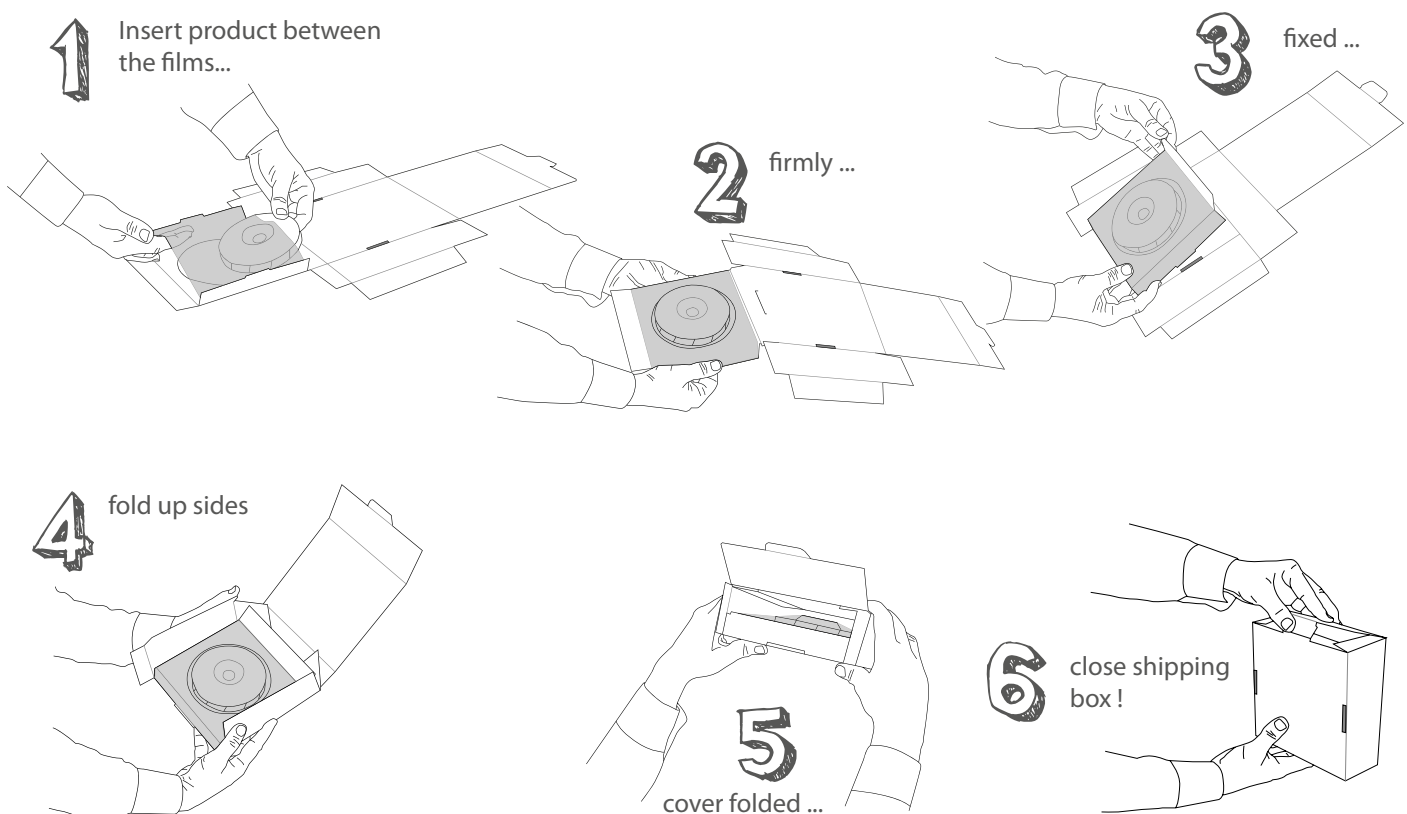
## Different Products – One Solution

German registered design DE 20 2011 109 294

Thanks to **Emba One®**, you can be just as varied as your products themselves. This flexible systems is compact and holds your product firmly in position during transit. With this process, **Emba One®** combines the good properties of product cushioning and product fixing.



**Emba One®** can individually adapt to even the most varied product contours. Due to the „suspended delivery“, there is a very high degree of protection against shocks and vibrations. Thanks to the clever construction, you only need an inner section (standard systems usually require 2-3 parts). The packaging time is considerably reduced. In the process, flat and also greater product dimensions can be sent in the same packaging.



The best from 2 systems combined !

No time-consuming folding as in previous systems is required here. Your product is **quickly** and **simply packaged** so that it is ready for sending.

Reduce your storage volumes as far fewer packaging sizes are needed.

Emba One® means that you can benefit from an **environmentally friendly** and **reusable** packaging system and automatically make a contribution to the environment. **The carbon footprint is considerably less** than in the case of standard packaging (e.g. foam). The packaging can be fed unseparated into the waste paper cycle.



## Properties

- Product cushioning and product fixing at the same time
- Perfectly adapts to various product contours and heights
- Suspended transport
- Only one inner component necessary
- Also with attached transport box possible

## Benefits

- Reduction in the variety of packaging
- Replaces expensive cushion systems
- Reusable packaging system
- Offers high protection against shocks and vibrations

## Uses

- Reduction of labour costs
- Reduction of storage costs
- A solution for lots of products
- Reduce packaging costs



**Version:**  
Single insert.

## The immediate delivery program

Maximum product size (mm)	Article code
120 x 100 x 40 mm	O 121004 Q / ESQ
200 x 100 x 60 mm	O 201006 S / ESDS

## NORM Line

The universal film which covers everything. The material is based on PU and clings perfectly to the different product contours. Depending on the product line this film type comes in different standard material thicknesses.

Features:

- highly flexible
- unprecedented shrink behaviour after stretching
- material based on PU



## MAXI Line

For very flat or heavy products with very high surface weight.

Features:

- film with 100 % higher strength compared to NORM Line
- material based on PU
- higher tensile force to securely hold your product in position



## ECO Line

The better-priced film type for light and flat products.

The use of a special stretch film on a cheaper material basis reduces the total price of this packaging even further.

This low-priced film has a high retention force with very good stretch properties and shrink behaviour after stretching.

Ideally suited for one-way shipping with high throughput volumes.

Features:

- strong film and identical corrugated cardboard of high quality
- material based on PE





## ESD Line

In order to protect your products from short-circuits due to electrostatic discharge we have developed a new film for the most demanding requirements.

Features:

- antistatic film with  $10^8$  to  $10^{11}$  Ohm surface resistance and for voltages of up to 50 Volts.
- for fast elimination of electric current to prevent damage
- Material based on PU
- corrugated cardboard with ESD protection (graphite coated) upon request



## VCI Line

For corrosion protection of your products. When the packaging is closed a fine anti-corrosive vapour builds up on the VCI stretch film.

The vapour then covers the product evenly with an absorption film.

Features:

- special VCI stretch film – developed in cooperation with corrosion protection specialist company EXCOR® Korrosionsforschung GmbH, Dresden, Germany
- corrosion protection feature in accordance with standard TL 8135-0043, Level 3
- reliable protection for various corrosion-sensitive metal products with various contours
- designed for ferrous metals, chrome, nickel, aluminium alloys with silicon, partly galvanised steel, cast iron of types GGL and GGG
- effective period of up to 2 years (in case of proper storage)
- material based on PE



# VCI-retention packaging

the corrosion protection solution

## Features

- Fully integrated packaging system for wide range of corrosion-sensitive products
- Up to two years temporary dry corrosion protection
- With VCI stretch film

## Advantages

- Safe transport and corrosion protection in one product
- Fast packing times
- Reduced variety of packaging materials.
- Smaller storage volumes

## Customer benefits

- No need for additional corrosion protection measures
- Proven Emba-Flex® packaging system
- Extensive cost savings
- More storage area



**VCI**-retention packaging  
for corrosion-sensitive  
metal products



# VCI-retention packaging

## the corrosion protection solution

### The technology

- The special folding mechanism ensures that the VCI stretch film fixes your product firmly to the corrugated board and therefore prevents slipping.
- The highly flexible yet practically non-tear film clings perfectly to the various product contours.
- The corrosion inhibitors on the VCI stretch film create a fine, vaporous corrosion protection in the sealed packing and envelop the product in a uniform absorption film.
- After opening the package the inhibitors evaporate without leaving any residue, so that it is not necessary to clean the product.

### Main features

- Special VCI stretch film – developed in conjunction with EXCOR® Korrosionsforschung GmbH, Dresden
- Corrosion-protection properties in accordance with TL 8135-0043, Stage 3
- Reliable protection for various corrosion-sensitive metal products and contours
- Designed for ferrous metals, chrome, nickel, aluminium alloys with silicon, partially galvanised steels, GGL and GGG cast iron - Other VCI film types available on request
- Lasts up to two years
- Reduces packaging variety by up to 90%
- Lowers process costs (procurement, storage, shipping, cleaning)
- Re-usable
- Economic due to standard range (no tooling costs)

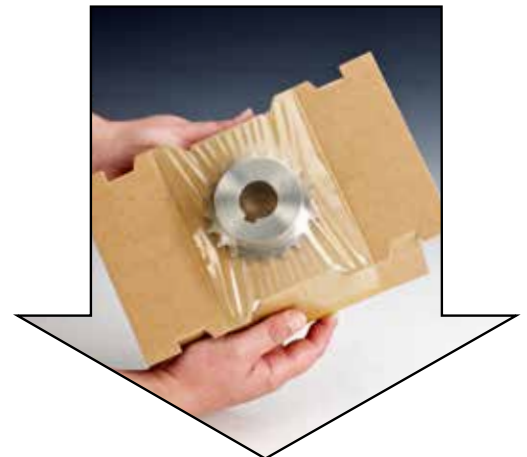
### Already proven / existing packaging solutions:

All standard sizes can be fabricated with VCI stretch film.

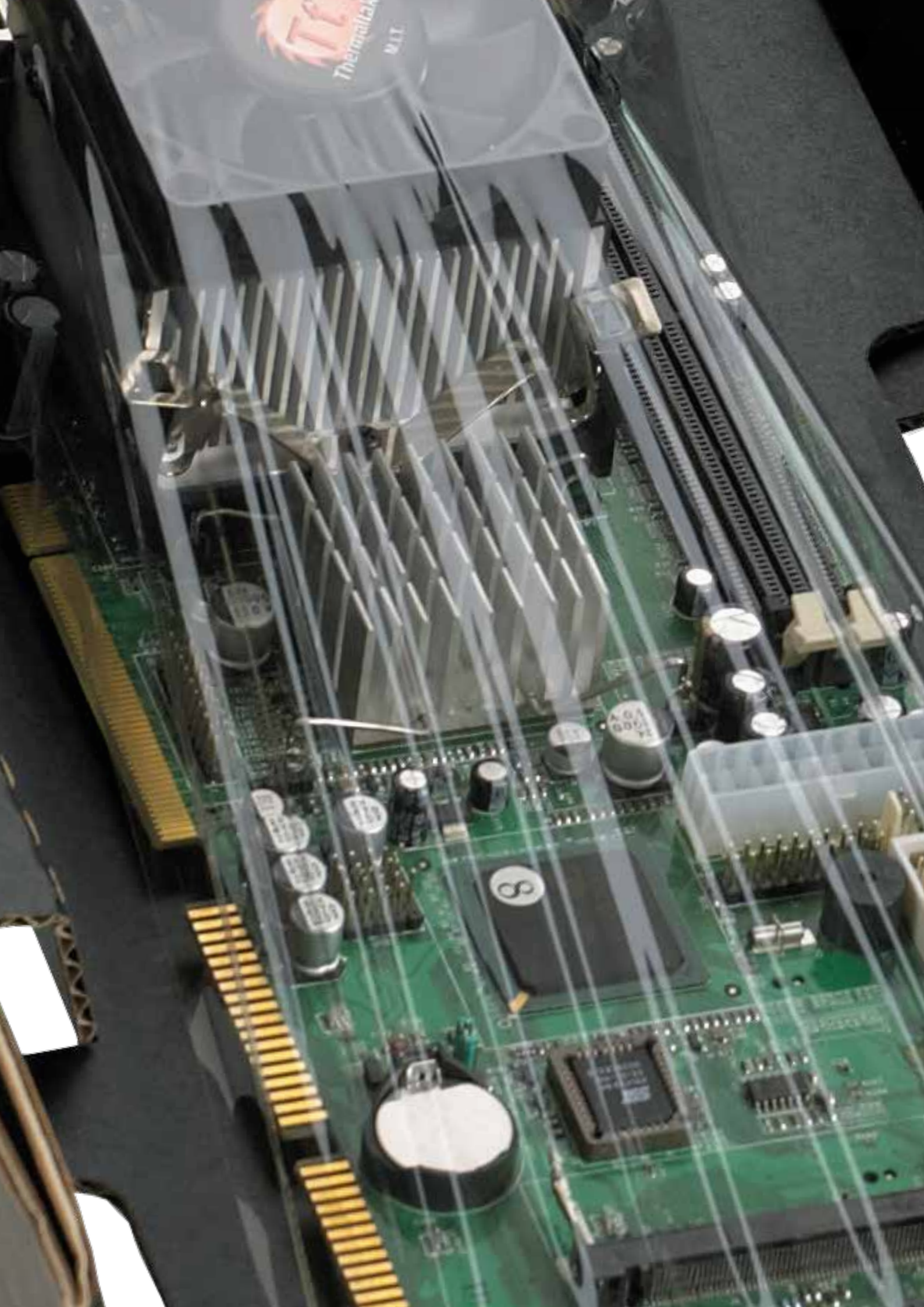
We also develop customised packaging solutions suited to your products.

The cardboard is also available with coated VCI.

We will provide the optimum solution. Just contact us!  
We look forward to receiving your inquiry.







fits perfectly  
fast simple packaging  
economical  
high degree of protection  
**SPECIAL PACKAGING**  
consumer electronics  
Laptops / Tablet-PCs  
TFT / LCD monitors  
printed circuit boards  
embedded systems



# Special packaging

## Consumer electronics



**Application:**

For typical consumer electronics products

**Features:**

Well-matched packaging systems for different fields of application

**Advantages:**

Superior shipping protection for high-quality consumer electronics equipment

The amount of packaging types is reduced



# Special packaging

For Laptops from 10 to 17 inch

## Special packaging for Laptops

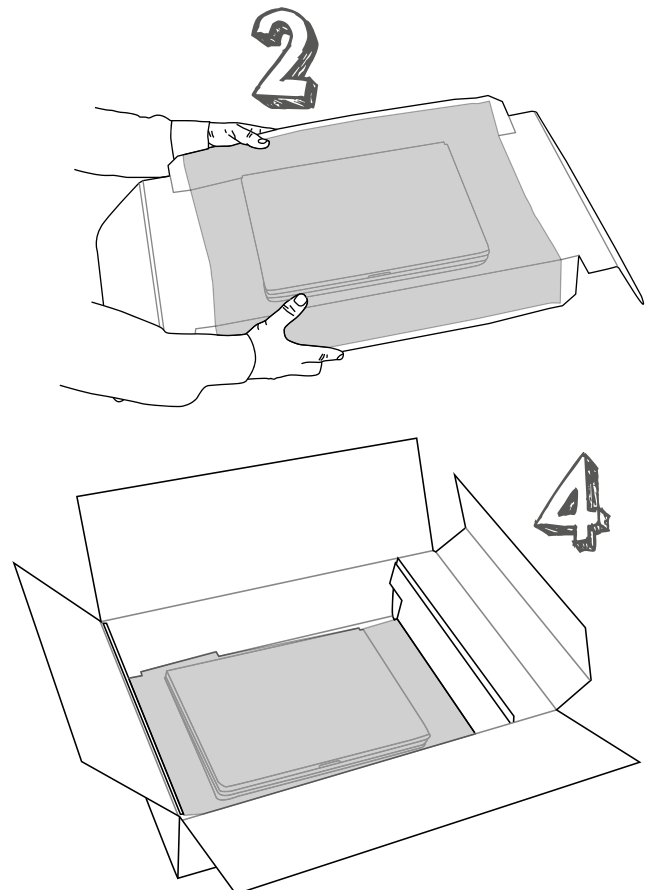
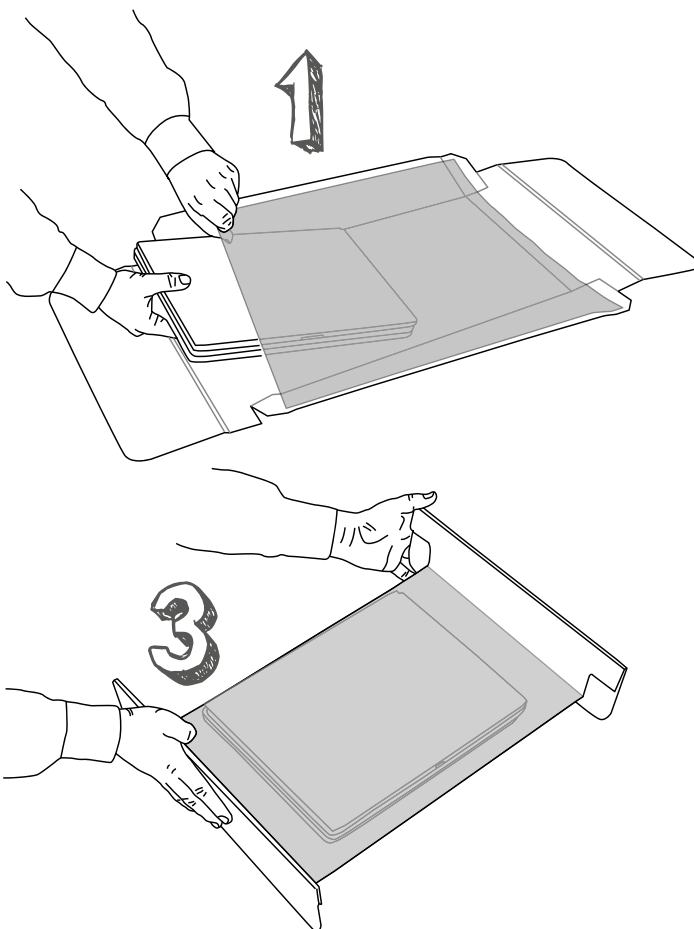
- high degree of protection for various laptops
- drop tested according to UPS and DIN ISO 2248 standards
- reduction of packaging diversity by up to 90%
- quick handling – easy packaging process
- with additional compartment for accessories
- reduction of process costs (procurement, storing, shipment)
- environment-friendly, can be disposed of with waste paper
- reusable
- professional appearance
- economical due to standard program (no tool costs)



## The method

Select the matching standard size according to the dimensions of your laptop. Now, place the laptop on the corrugated board under the retention packaging film. Folding down the flaps on the sides stretches the film and the laptop is clamped onto the corrugated board format. Your device is now held in place

and secured against slipping out. Finally, put up the opposing flaps. Your laptop is safely enwrapped. The hollow bottom ensures that there is a gap between your laptop and the walls on all sides, providing additional protection against any external influences. All that's left to do is put it into the box!



# Special packaging

For Laptops from 10 to 17 inch

## Application examples

With this special packaging based on the Emba-FLEX® retention packaging, you have an all-purpose system for secure and cost effective shipping of your laptops.

In addition, devices with different dimensions and weights can be handed quickly and easily especially if many shipments are planned. Also product accessories are packed professionally and securely in accessory compartments.

In addition to our immediate delivery program listed in the table below we also offer existing special packaging as well as new developments according to your individual needs.



accessory compartment  
for power supply

## The immediate delivery program

Product to be shipped	Article code	Max. product weight	Page
Netbooks 13 Zoll	FL 312104 ECSZ	ca. 2,5 kg	104
Laptops bis 15 Zoll	FL 362604 ECSZ	ca. 3,5 kg	104
Laptops bis 17 Zoll	FL 473005 ECSZ	ca. 4,5 kg	104

Available in sets of 50 and more. Special sizes on request.





# Special packaging

For Laptops from 13 to 17 inch



Maximum product size: **310 x 210 x 40 mm**

## Product data

Overall transport box dimensions 438 x 268 x 96 mm  
Fefco 0201 slotted-type box with top and bottom flaps and accessory compartment,  
Quality B 1.20  
Scope of delivery = Fixing insert 1 unit,  
Transport box 1 unit

**New!**

## Article code

## Version

**FL 312104 ECSZ**

ECOLine 50, PE film 50 microns

You can also get the box without compartment.  
Please use the following article-code:

**FL 312104 ECS**

ECOLine 50, PE film 50 microns

Applications: 13" laptops  
Max. product weight: up to 2500 gr.



Maximum product size: **360 x 260 x 40 mm**

## Product data

Overall transport box dimensions 504 x 318 x 100 mm  
Fefco 0201 slotted-type box with top and bottom flaps and accessory compartment,  
Quality B 1.40  
Scope of delivery = Fixing insert 1 unit,  
Transport box 1 unit

**New!**

## Article code

## Version

**FL 362604 ECSZ**

ECOLine 50, PE film 50 microns

You can also get the box without compartment.  
Please use the following article-code:

**FL 362604 ECS**

ECOLine 50, PE film 50 microns

Applications: 15" laptops  
Max. product weight: up to 3500 gr.



Maximum product size: **470 x 300 x 50 mm**

## Product data

Overall transport box dimensions 646 x 366 x 112 mm  
Fefco 0201 slotted-type box with top and bottom flaps and accessory compartment,  
Quality B 1.40  
Scope of delivery = Fixing insert 1 unit,  
Transport box 1 unit

**New!**

## Article code

## Version

**FL 473005 ECSZ**

ECOLine 50, PE film 50 microns

You can also get the box without compartment.  
Please use the following article-code:

**FL 473005 ECS**

ECOLine 80, PE film 80 microns

Applications: 17" laptops  
Max. product weight: up to 4500 gr.

The indicated max. weights are approximate values and can vary depending on the product to be shipped.

# Special packaging

For Tablet-PCs



FL 191203 Q

Maximum product size: **190 x 120 x 30 mm**

## Product data

Overall dimensions 250 x 151 x 57 mm  
Quality E 1.50  
Scope of delivery = Retention packaging with attached transport box  
1 unit

Article-Code	Version
<b>FL 191203 Q</b>	NORMLine 50, PU film 50 microns
<b>FL 191203 ESQ</b>	ESDLine 50, PU film ESD 50 microns
<b>FL 191203 ECQ</b>	ECOLine 50, PE film 50 microns

Applications: Festplatten, Kleingeräte, Platinen  
Max. product weight: up to 1000 Gramm



FL 231502

Maximum product size: **230 x 150 x 20 mm**

## Product data

Overall dimensions 338 x 211 x 47 mm  
and accessory compartment,  
Quality E1.40  
Scope of delivery = Retention packaging with attached transport box  
1 unit

**including accessory compartment**

Article-Code	Version
<b>FL 231502 S</b>	NORMLine 50, PU film 50 microns
<b>FL 231502 ESDS</b>	ESDLine 50, PU film ESD 50 microns
<b>FL 231502 EC6S</b>	ECOLine 50, PE film 50 microns

Applications: Tablet-PC's, plates  
Max. product weight: up to 1000 Gramm



FL 241801 Q

Maximum product size: **240 x 180 x 10 mm**

## Product data

Overall dimensions 342 x 230 x 44 mm  
Quality E 1.50  
Scope of delivery = Retention packaging with attached transport box  
1 unit

Article-code	Version
<b>FL 241801 Q</b>	NORMLine 50, PU film 50 microns
<b>FL 241801 ESQ</b>	ESDLine 50, PU film ESD 50 microns
<b>FL 241801 ECQ</b>	ECOLine 80, PE film 80 microns

Applications: Tablet-PCs, plates  
Max. product weight: up to 1500 Gramm

The indicated max. weights are approximate values and can vary depending on the product to be shipped.

# Special packaging

## For Smartphones



FL 150702 Q

Maximum product size: **150 x 70 x 20 mm**

### Product data

Overall dimensions 200 x 107 x 49 mm

Quality E 1.50

Scope of delivery = Retention packaging with  
attached transport box  
1 unit

### Article-code

### Ausführung

**FL 150702 Q**

NORMLine 50, PU Folie 50 my

**FL 150702 ESQ**

ESDLine 50, PU Folie ESD 50 my

**FL 150702 ECQ**

ECOLine 50, PE Folie 50 my

Einsatzbereich: Smartphones, Platinen, flache Bauteile  
Max. Produktgewicht: bis ca. 750 Gramm



FL 160801 Q

Maximum product size: **160 x 80 x 10 mm**

### Product data

Overall dimensions 195 x 110 x 50 mm

Quality E 1.40

Scope of delivery = Retention packaging with  
attached transport box  
1 unit

**New!**

### Article-code

### Version

**FL 160801 Q**

NORMLine 50, PU film 50 microns

**FL 160801 ESQ**

ESDLine 50, PU film ESD 50 microns

**FL 160801 ECQ**

ECOLine 80, PE film 80 microns

Applications: Smartphones, circuit boards  
Max. product weight: up to 750 Gramm





# Monitore





# Special packaging

For monitors from 17 to 27 inch

## Monitors

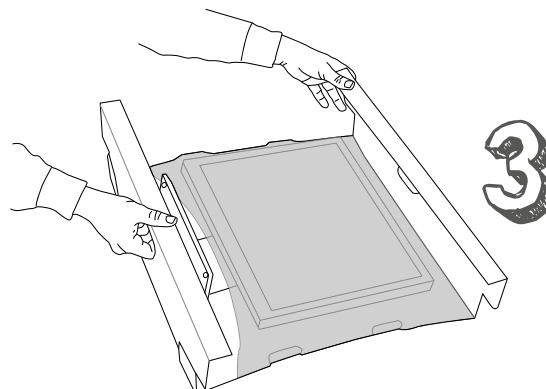
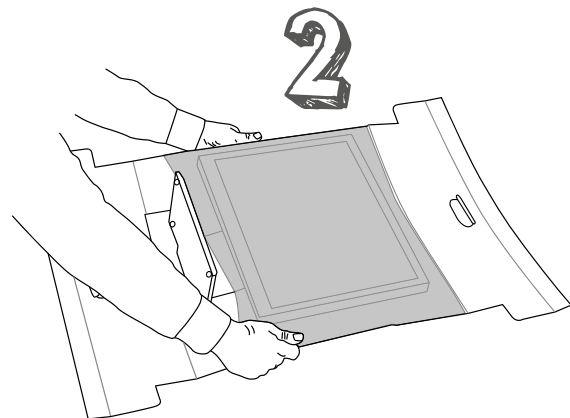
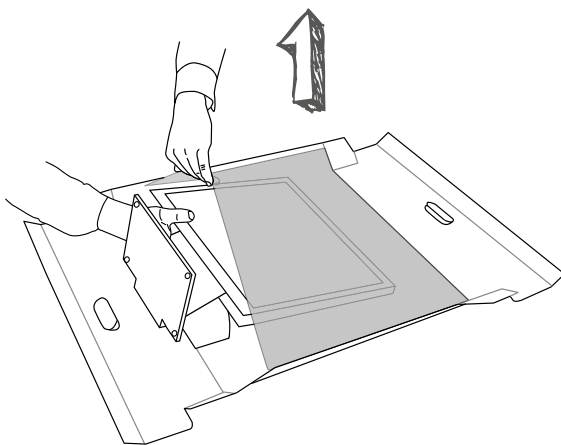
- high degree of protection for various monitors
- reduction of packaging diversity by up to 90%
- quick handling – easy packaging process
- hollow bottom provides storage space for accessories
- reduction of process costs (procurement, storing, shipment)
- environment-friendly, can be disposed of with waste paper
- reusable
- professional appearance
- economical due to standard program (no tool costs)



## The method

Place the monitor on the corrugated board under the retention packaging film. The stand has enough space to fit through the universal opening. Folding down the flaps on the sides stretches the film and the monitor is clamped onto the corrugated board format. Your device is now held in place and secured against slipping out.

Finally, put up the opposing flaps. Your monitor is safely enveloped. The stand fits through the opening. Now place the bottom cushion in the box, then insert the retention packaging. The stand passes through the opening provided in the bottom cushion. All that's left to do is close the box!



# Special packaging

For monitors from 17 to 27 inch

## Application examples

With this special packaging based on the Emba-FLEX® retention packaging, you have an all-purpose system for secure and cost effective shipping of your monitors.

In addition, devices with different dimensions and weights can be handed quickly and easily especially if many shipments are planned. Your product accessories are stored securely and professionally in the hollow bottom. Also the stand fits securely in the opening provided for this purpose.

In addition to our immediate delivery program listed in the table below we also offer existing special packaging as well as new developments according to your individual needs.



## The immediate delivery program

Product to be shipped	Article code	Max. product weight	Page
Monitor up to 19" (multiple-use)	SW 4646150 S **	ca. 10 kg	112
Monitor up to 27" (multiple-use)	FL 625816 TFTS	ca. 10 kg	112

\* Available in sets of 50 and more (1 insert, 1 cushion, 1 box).

\*\* Available in sets of 50 and more (2 cushions, 1 box).

Special sizes on request.



# Special packaging

For monitors from 17 to 27 inch



SW 4646150

Maximum product size: **460 x 460 mm**

## Product data

Overall transport box dimensions 610 x 568 x 328 mm  
Fefco 0201 slotted-type box with top and bottom flaps  
Quality BC 2.30  
Scope of delivery = Membrane cushion 2 units,  
Transport box 1 unit

## Article code

## Version

**SW 4646150 S**

NORMLine 100, PU film 100 microns

## For multiple-use shipping

Applications: 17" to 19" monitors  
Max. product weight: up to 10.0 kg



FL 625816 Tfts

Maximum product size: **460 x 460 x 180 mm**

## Product data

Overall transport box dimensions 769 x 634 x 343 mm  
Fefco 0201 slotted-type box with top and bottom flaps  
Quality BC 2.30  
Scope of delivery = Fixing insert 1 unit,  
Bottom cushion 1 unit,  
Transport box 1 unit

## Article-Code

## Version

**FL 625816 Tfts**

ECOLine 100, PE film 100 my

## for one-way shipping

Application: **22" - 27"** Monitors  
Max. product weight: up to 10 kg



**Doc Emba** recommends:



# Television





## Your advantages:

- highest protection for large-size flat screens of up to 50 kg
- upright transport of screens
- quick handling – easy packaging process
- no expensive foam packaging or wooden boxes necessary
- reduction of process costs (procurement, storing, shipment)
- environment-friendly, can be disposed of with waste paper
- reusable
- economical due to standard program (no tooling costs)



This cushion solution has been designed for large-size flat screens and flat panels with or without a stand. It is tailor-made for 32 to 60-inch diagonal screens. Smaller screen diagonals on request.

## The method

Our special packaging for screens is based on the suspension packaging Emba-Swing®. The corner suspension cushions can accommodate different display formats ranging from 32 to 60 inches. This version is especially useful in cases where a stand is pre-installed.

Due to the 4 cushions no stress is applied to any side of the screen. This system allows to pack screens in various dimensions. The outer box will be designed as an individual telescopic packaging.





### Product data

Quality BC 2.30

Scope of delivery = Suspension cushion 1 unit

Article-Code	Version
<b>SW 2206100 M</b>	MAXILine 150, PU film 150 my

for televisions up to 60 inches

Area of application: Televisions, flat panels  
Max. Product weight: up to approx. 50 kg

The indicated max. weights are approximate values and can vary depending on the product to be shipped.





automatic  
large packaging volumes  
without defined order  
precise process cost estimation

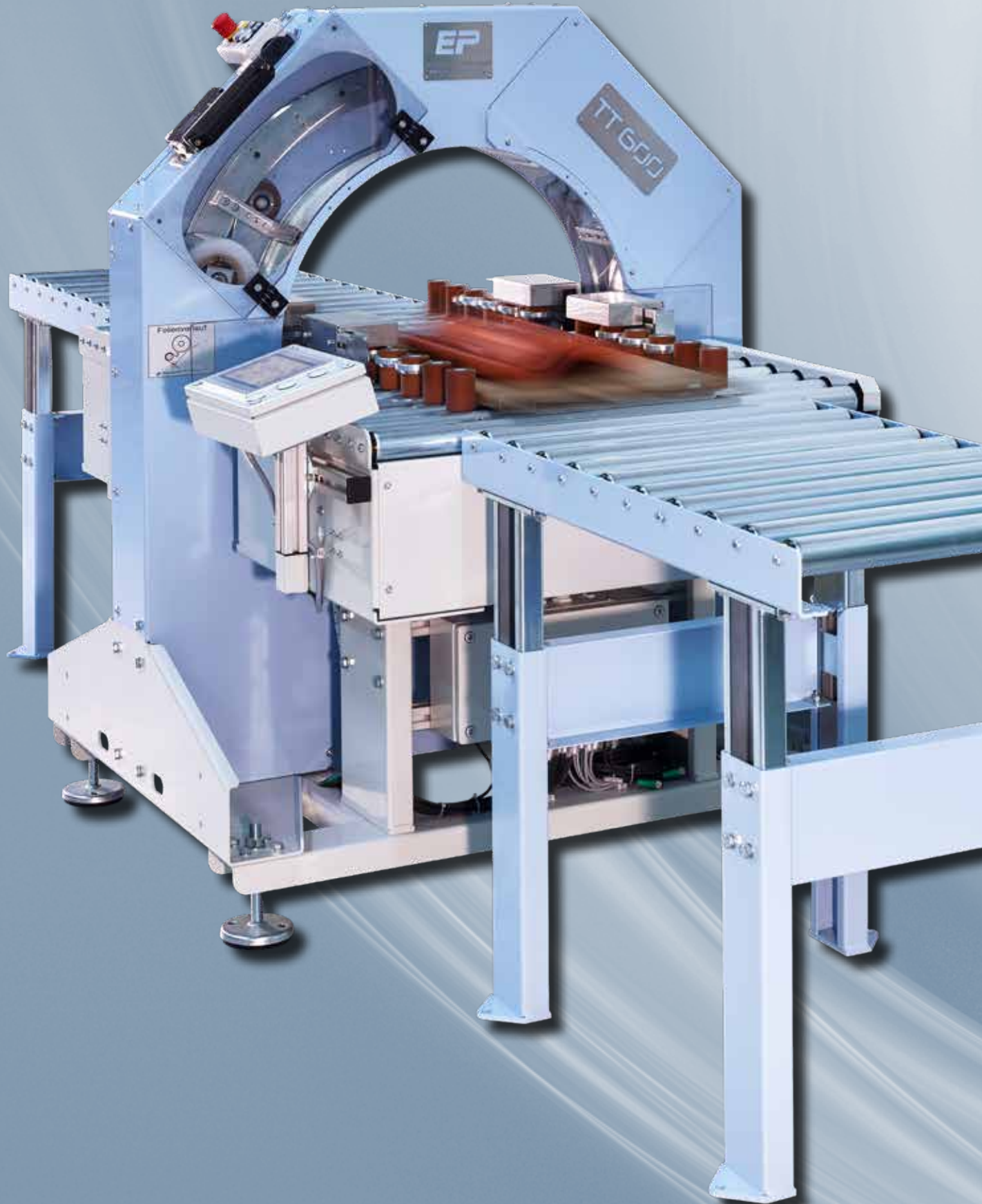
Emba-Protec®

for products with various  
heights and weights  
constant packaging speed  
reducing amount of packaging



# Emba-TrayTec®

## The Automatic Packaging Solution



*If you simply want  
to pack everything!*



### **Application:**

For large packaging volumes.  
For products with various heights and weights.

### **Features:**

Automatic packaging without defined order.

### **Advantages:**

Constant packaging speed.  
Precise process cost estimation.  
The amount of packaging types is reduced to a few sizes.

## The Automatic Packaging Solution

### Emba - TrayTec®

- significant degree of automation for constantly changing types of products, weight: 0.01 - 160 kg
- constant packaging speed
- standardization of packaging types
- significant reduction of packaging costs
- optimal product protection, even in case of packing units of different heights
- no additional filling materials necessary
- very high packaging quality and professional appearance
- very low power consumption, since no thermal processes necessary
- no set-up time
- silent operation of the machine
- small footprint of the machine
- can be seamlessly integrated into existing packaging lines
- immediately ready for use
- automatic tray dispenser available on request



### Our technology

The product is placed onto a defined tray. The shape, the dimensions or the heights of the product do not matter. The important thing is that it fits the size of the provided shipping box.

The automatic feed is used to vertically wrap both - the tray and the product - with the special stretch film. The product is firmly clamped onto the corrugated board format and can be securely shipped in a box.





## The Automatic Packaging Solution

This tray packaging machine ensures perfect product protection, high-speed packaging and low costs. This easy-to-operate machine offers maximum flexibility for small and large product lines. The packaging process still remains the same even for **constantly changing products** with **different heights and weights of up to 160 kg**. And the best of it : You reduce the amount of packaging sizes, storage space and time. Filling and cushioning materials are no longer required.

**Typical shipped goods include gears, pumps, motors, gear wheels, drives, light- and heavy-weight replacement parts of all types, as well as sensitive machine components from the entire field of process measuring and control technology.**

### Application:

For large packaging volumes.

For products with various heights and weights.

### Features:

Automatic packaging without any defined order.

### Advantages:

Constant packaging speed.

Precise process calculation.

The amount of packaging types is reduced to a few sizes.

Also available with ESD and VCI film !



In order to protect your products from short-circuits due to electrostatic discharge we have developed a new film for the most demanding requirements. Antistatic film  $10^8$  to  $10^{11}$  Ohm surface resistance.



For corrosion protection of your products. When the packaging is closed a fine anti-corrosive vapour builds up on the VCI stretch film. The vapour then covers the product evenly with an absorption film. Broadband effect for many metals and alloys.

## The Concept

### How does the concept work?

Our team develops the sizes you require based on your daily packaging tasks. Furthermore, the new standard program without tool costs can be used. Once the packages have been checked and found to be in perfect condition, we're ready to start.

You enter into a supply contract for the quantity you require. Then, Emba-Protec will supply you with the wrapping machine, including detailed instructions. All necessary packaging components (trays, film, shipping cartons) are supplied to you on call off. You only pay a fixed set price per packaging supplied. We, of course, will assist you with any queries and wishes for modification. This is part of our customer service.

### Your advantages

- **Packaging sizes are standardised and immediately available**
- **No tool costs**
- **Significant reduction of packaging times / costs**
- **Packaging in random sequence is possible**
- **For products weighing between 0.1 and 160 kg !**
- **No other filling and cushioning materials are required**
- **Best possible product protection during shipping**
- **Reduction of storage costs due to small on-call batches**

Find the standard size matching your requirements on the following pages. We look forward to advising you!

Example motor



Example 2-DIN radio



Example display



Example head lamp



Example steering shaft



Example pump



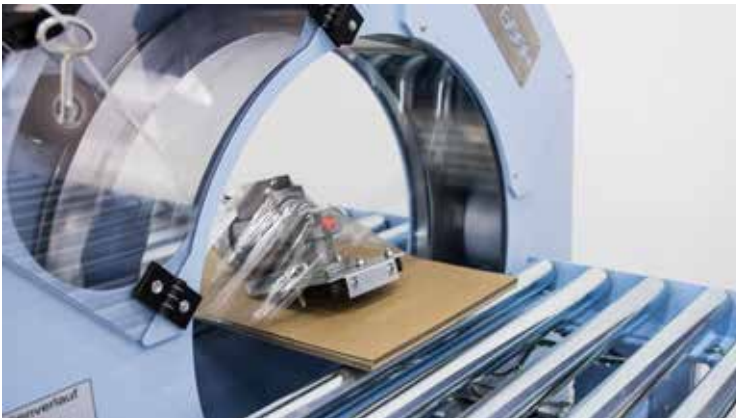
## The Machine Versions

### semi-automatic system



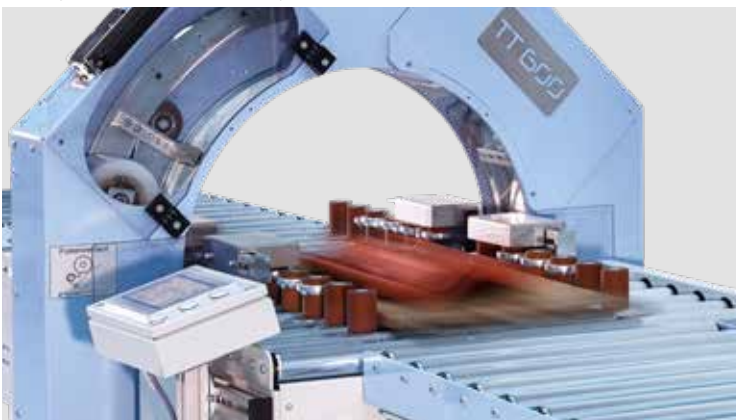
A semi-automatic system with easy handling. For small quantities and few placement options. This system allows for individual wrapping. And your products will always reach their destination safely.

### hybrid version



The hybrid machine covers the gap between the semi-automatic and the fully automatic machine solution, in terms of price and technique.

### fully automatic system



The fully automatic system for high throughput quantities. Up to 6 packing operations per minute are possible! Equipped with many features, e.g. automatic tray detection or a variety of different wrapping programs.

## The Standard Program



Maximum product size: **160 x 130 x 70 mm**

### Product data

Overall transport box dimensions 210 x 170 x 97 mm  
Fefco 0713 with crash-lock base and closing lid  
Quality E 1.40  
Scope of delivery = 1x tray  
1x outer box  
film in rolls

Article-Code	Machine Version
<b>TT 161307 M60</b>	winding ring 600, semi-automatic
<b>TT 161307 H60</b>	winding ring 600, hybrid version
<b>TT 161307 A60</b>	winding ring 600, fully automatic



Maximum product size: **300 x 200 x 100 mm**

### Product data

Overall transport box dimensions 344 x 251 x 148 mm  
Fefco 0713 with crash-lock base and closing lid  
Quality C 1.40  
Scope of delivery = 1x tray  
1x outer box  
film in rolls

Article-Code	Machine Version
<b>TT 302010 M60</b>	winding ring 600, semi-automatic
<b>TT 302010 H60</b>	winding ring 600, hybrid version
<b>TT 302010 A60</b>	winding ring 600, fully automatic



Maximum product size: **350 x 240 x 70 mm**

### Product data

Overall transport box dimensions 400 x 300 x 116 mm  
Fefco 0201 slotted-type box with top and bottom flaps  
Quality C 1.30  
Scope of delivery = 1x tray  
1x outer box  
film in rolls

Article-Code	Machine Version
<b>TT 352407 M60</b>	winding ring 600, semi-automatic
<b>TT 352407 H60</b>	winding ring 600, hybrid version
<b>TT 352407 A60</b>	winding ring 600, fully automatic

Also available with ESD and VCI film !

Special sizes and other machine formats are available on request. We look forward to advising you.

## The Standard Program



TT 352417

Maximum product size: **350 x 240 x 170 mm**

### Product data

Overall transport box dimensions 400 x 300 x 224 mm  
Fefco 0201 slotted-type box with top and bottom flaps  
Quality C 1.30  
Scope of delivery = 1x tray  
1x outer box  
film in rolls

Article-Code	Machine Version
<b>TT 352417 M60</b>	winding ring 600, semi-automatic
<b>TT 352417 H60</b>	winding ring 600, hybrid version
<b>TT 352417 A60</b>	winding ring 600, fully automatic



TT 533216

Maximum product size: **530 x 320 x 160 mm**

### Product data

Overall transport box dimensions 600 x 400 x 238 mm  
Fefco 0201 slotted-type box with top and bottom flaps and additional crease of 100 mm, Quality BC 2.40  
Scope of delivery = 1x tray, 1x outer box  
film in rolls

Article-Code	Machine Version
<b>TT 533216 M60</b>	winding ring 600, semi-automatic
<b>TT 533216 H60</b>	winding ring 600, hybrid version
<b>TT 533216 A60</b>	winding ring 600, fully automatic
<b>TT 5332 V</b>	Reinforcing die cut for heavy products (to be placed on the tray before wrapping)



TT 533226

Maximum product size: **530 x 320 x 260 mm**

### Product data

Overall transport box dimensions 600 x 400 x 338 mm  
Fefco 0201 slotted-type box with top and bottom flaps and additional crease of 100 mm, Quality BC 2.40  
Scope of delivery = 1x tray, 1x outer box  
film in rolls

Article-Code	Machine Version
<b>TT 533226 M60</b>	winding ring 600, semi-automatic
<b>TT 533226 H60</b>	winding ring 600, hybrid version
<b>TT 533226 A60</b>	winding ring 600, fully automatic
<b>TT 5332 V</b>	Reinforcing die cut for heavy products (to be placed on the tray before wrapping)

Also available with ESD and VCI film !





Emba-TrayTec® Plus  
Protective Packaging meets high speed





# Emba-TrayTec Plus

European patent number EP 3 708 518

Until now, shipping sensitive products involved a great deal of effort. There were two key prerequisites to making sensitive, high-quality products ready for shipment: **time** and **costly packaging material**. Emba-Protec has created an innovative packaging solution that solves **both these problems!** You'll already accomplish a great deal by using our cushion-based suspension packaging. **Perfect protection at reasonable costs.** But using and arranging two cushions is time-consuming when you're dealing with larger volumes. Now you can combine the advantages of the Emba-Protec's cushion-based suspension packaging with speedy automation. Emba-TrayTec Plus: one cushion, one packaging process, in far less time. You benefit from all the advantages of the familiar Emba-Swing suspension packaging and the Emba-TrayTec machine system. **You save both time and money, considerably cutting your process costs while you're at it.**



Prepare the tray ...



Put on the product ...



And wrap it ready for shipment !

### Costs:

- 60% cheaper than comparable foam solutions
- 40% cheaper than suspension cushions (you save a cushion)
- Takes up 90% less storage space compared to foam solutions
- 50% faster packaging process

### Environment:

- Single-material solution (film content less than 5%)
- Making it the most eco-friendly packaging
- Can be disposed of together with waste paper
- Eliminates all foam packaging that's harmful to the environment. Absolutely all of it!

### Protection:

- Combines the advantages of two tried-and-tested systems
- Also packages products with complicated contours
- Unbeatable protection – even of products that are very shock-sensitive
- Product placed on a cushion for 'floating' transport

### Speed:

- Faster than ever before !

**Suspension cushion  
at the base,  
fixation from the top**

**=**

**100% Protection**



# Buzz n' Pack<sup>®</sup>

Packing on command







The fastest packaging  
we know!

### **Application:**

Decentralized packaging

E-Commerce

Designed for logistics and contract packaging operations

### **Features:**

Machine packaging at the touch of a button

High protection and cushioning function

### **Advantages:**

Consistent high packing speeds

Always the same packing process

Consistent packaging costs

Easy to use machine

## Packing on command

### The advantages at a glance:

- Up to 4 packaging cycles per minute (!)
- 4 standard sizes covering everything
- Adjustable between sizes in seconds
- No programming involved
- Always consistent packing process, no matter who is packing
- No fluctuations in consumption
- Employee training takes 5 minutes
- Clearly safest product protection due to firm fixation
- Significantly less packaging waste at the end customer
- Dust-free shipping
- Use of recycle film with up to 65% content possible
- Immediately ready for use, no thermal energy heavy current or compressed air is necessary
- Small compact machine that fits everywhere



### The method:

The tray is adjusted on 4 sizes with a hand lever which is in close proximity.

The appropriate tray (S, M, L, XL) is put placed on the machine, the holder fixes the tray automatically. Then the goods to be shipped (several are also possible) are placed on the tray. By pressing a button (buzzer) the packing process is started. Simultaneously the employee can erect the shipping carton or prepare shipping documents. Immediately afterwards, the tray is wrapped and ready to be placed in the shipping carton.

With this machine system, everything is child's play and perfectly packed. The costs are always the same and included in the tray price. The machine system is provided for you, foil included. You have no fluctuations due to more or less filling material. Goods up to 10 kg are no problem. Due to perfectly designed outer cartons and reinforcements, shipping is fast and safe.



Buzz n'Pack 600er



Buzz n'Pack 400er



### Place tray

The tray is placed up to stop.  
After that the tray locks automatically.



### Place product

The goods to be packed are placed on the  
positioned tray (even more than one product  
is possible).



### Press buzzer

The buzzer starts the packing process. The goods  
are wrapped tightly with film (of course with  
recycled content film) onto the tray. During the  
packaging process, the user can prepare other  
activities (e.g. assemble the outer carton). The  
buzzer housing is magnetic and can be placed  
anywhere.



### into the box !

Your product is ready for dispatch.

## The Standard Programm



BNP S

Maximum product size: **200 x 160 x 70 mm**

### Product data S

Overall transport box dimensions 246 x 190 x 112 mm  
Fefco 0703 with crash-lock base and closing lid  
with self-adhesive strip and tear strip  
or as folding box Fefco 0201  
Quality B 1.20

Article-Code	Packing type
<b>BNPS</b>	Tray S
<b>BNPSV</b>	Reinforcement
<b>UK703BNPS</b>	Outer carton with quick release fastener F0703
<b>UK201BNPS</b>	Folding box outer carton F0201



BNP M

Maximum product size: **270 x 200 x 80 mm**

### Product data M

Overall transport box dimensions 316 x 236 x 122 mm  
Fefco 0703 with crash-lock base and closing lid  
with self-adhesive strip and tear strip  
or as folding box Fefco 0201  
Quality B 1.30

Article-Code	Packing type
<b>BNPM</b>	Tray M
<b>BNPMV</b>	Reinforcement
<b>UK703BNPM</b>	Outer carton with quick release fastener F0703
<b>UK201BNPM</b>	Folding box outer carton F0201



BNP L

Maximum product size: **350 x 230 x 220 mm**

### Product data L

Overall transport box dimensions 406 x 266 x 262 mm  
Fefco 0703 with crash-lock base and closing lid  
with self-adhesive strip and tear strip  
or as folding box Fefco 0201  
Quality B 1.40

Article-Code	Packing type
<b>BNPL</b>	Tray L
<b>BNPLV</b>	Reinforcement
<b>UK703BNPL</b>	Outer carton with quick release fastener F0703
<b>UK201BNPL</b>	Folding box outer carton F0201



BNP XL

Maximum product size: **530 x 350 x 250 mm**

### Product data XL

Overall transport box dimensions 602 x 402 x 303 mm  
Fefco 0703 with crash-lock base and closing lid  
with self-adhesive strip and tear strip  
or as folding box Fefco 0201  
Quality EB 2.30

Article-Code	Packing type
<b>BNPXL</b>	Tray XL
<b>BNPXLV</b>	Reinforcement
<b>UK703BNPXL</b>	Outer carton with quick release fastener F0703
<b>UK201BNPXL</b>	Folding box outer carton F0201



## Special Accessories

### Bins



Lockable bins can be ordered separately for the standard trays in sizes **S, M, and L**. **These are especially well-suited for loose goods.**

**Article No.: BNP-SSCH**

**Article No.: BNP-MSCH**

**Article No.: BNP-LSCH**

### Half-height Carton



Our proven outer carton in **size L** is now also available on request in **half-height**.

**Article No.: UK201BNPLH**

**Article No.: UK703BNPLH**

### Emba-Swing



For the standard trays, Emba-Swing is available separately to fit Buzz n' Pack sizes **L** and **XL**. **Especially suitable for sensitive goods that require bottom cushioning.**

With the four standard sizes shown on the left, you can cover all of your packaging contents.

You can choose from 2 different shipping carton types.

Illustrations on the right: Envelope carton with quick release fastener, Fefco 0703, in size M.

Example application



And last but not least:  
boxes, boxes, boxes ... !





off-the-shelf

## You only need transport boxes for the dispatch?

Article code	Quality	Inner dimensions (mm) Length x Width x Height	Out dimensions (mm) Length x Width x Height
UK201BNPS	B 1.20	240 x 184 x 100	245 x 189 x 110
UK703BNPS	B 1.20	240 x 184 x 100	245 x 189 x 112
UK201BNPM	B 1.20	310 x 230 x 110	315 x 235 x 120
UK703BNPM	B 1.20	310 x 230 x 110	315 x 235 x 122
UK201BNPL	B 1.40	400 x 260 x 250	405 x 265 x 260
UK703BNPL	B 1.40	400 x 260 x 250	405 x 265 x 262
UK201BNPXL	EB 2.30	593 x 393 x 285	600 x 400 x 299
UK703BNPXL	EB 2.30	593 x 393 x 285	600 x 400 x 302
UK EV 271206**	E 1.30	345 x 150 x 100	349 x 154 x 108
UK EV 271802*	B 1.30	305 x 270 x 65	330 x 280 x 71
UK EV 291507**	E 1.30	345 x 175 x 120	349 x 179 x 128
UK EV 311209**	B 1.30	350 x 220 x 140	356 x 226 x 152
UK EV 392804*	B 1.40	440 x 400 x 70	465 x 410 x 76
UK EV 402512**	B 1.40	460 x 317 x 180	466 x 326 x 192
UK EV 453105*	B 1.40	500 x 420 x 85	525 x 430 x 91
UK FL 101004	E 1.20	140 x 115 x 60	145 x 120 x 67
UK FL 120804	E 1.40	205 x 165 x 90	210 x 170 x 97
UK FL 120905	B 1.30	151 x 125 x 71	158 x 132 x 82
UK FL 140804	E 1.20	165 x 111 x 60	170 x 116 x 67
UK FL 141004	B 1.30	170 x 170 x 73	176 x 176 x 84
UK FL 151504	B 1.30	192 x 176 x 75	199 x 183 x 86
UK FL 151506	B 1.30	192 x 176 x 98	199 x 183 x 109
UK FL 161002*	E 1.2	230 x 140 x 42	246 x 146 x 46
UK FL 161204*	E 1.20	175 x 149 x 47	182 x 165 x 52
UK FL 161205*	E 1.20	175 x 149 x 72	182 x 165 x 75
UK FL 161210	B 1.30	194 x 160 x 128	200 x 167 x 139
UK FL 180906	B 1.30	189 x 108 x 85	196 x 115 x 96
UK FL 181004	E 1.20	213 x 143 x 69	218 x 148 x 76
UK FL 181006	B 1.30	209 x 151 x 96	214 x 156 x 109
UK FL 191606	B 1.30	218 x 218 x 93	224 x 224 x 104
UK FL 202006	B 1.30	242 x 228 x 88	249 x 235 x 99
UK FL 202008	B 1.30	242 x 228 x 108	249 x 235 x 119
UK FL 221506	B 1.30	248 x 192 x 88	255 x 199 x 99
UK FL 221508	B 1.30	248 x 192 x 108	255 x 199 x 119
UK FL 231502*	E 1.40	324 x 205 x 43	338 x 211 x 47
UK FL 231806	B 1.30	297 x 205 x 76	300 x 210 x 89
UK FL 241004	B 1.30	300 x 147 x 82	306 x 153 x 92
UK FL 252506	C 1.40	292 x 286 x 95	300 x 295 x 108
UK FL 252508	C 1.40	292 x 286 x 125	300 x 295 x 138
UK FL 281607	B 1.30	330 x 227 x 108	335 x 232 x 121
UK FL 281812**	C 1.30	316 x 288 x 162	325 x 297 x 178
UK FL 292606	C1.30	422 x 330 x 92	452 x 339 x 98
UK FL 300905*	B 1.30	330 x 132 x 64	352 x 143 x 72
UK FL 302007	C 1.40	335 x 242 x 105	344 x 251 x 118
UK FL 302010	C 1.40	335 x 242 x 135	344 x 251 x 148

\*Fefco 0427, \*\*Fefco 0201

Pick what you need from this large overview:

Article code	Quality	Inner dimensions (mm) Length x Width x Height	Out dimensions (mm) Length x Width x Height
UK FL 302214**	C 1.30	340 x 330 x 184	349 x 339 x 200
UK FL 303008	C 1.40	392 x 335 x 113	400 x 343 x 126
UK FL 312104	B 1.20	370 x 262 x 84	376 x 268 x 96
UK FL 342012**	C 1.30	380 x 263 x 146	389 x 272 x 162
UK FL 342505	BC 2.30	400 x 332 x 110	414 x 346 x 138
UK FL 352008	C 1.40	385 x 283 x 110	394 x 292 x 123
UK FL 352504*	C 1.40	395 x 302 x 105	435 x 315 x 115
UK FL 362410**	C 1.30	425 x 295 x 155	434 x 304 x 171
UK FL 362604	B 1.40	430 x 312 x 88	436 x 318 x 100
UK FL 382508**	C 1.30	440 x 326 x 125	448 x 334 x 140
UK FL 402010	B 1.40	470 x 265 x 143	477 x 272 x 154
UK FL 402510**	BC 2.30	532 x 320 x 142	547 x 335 x 170
UK FL 403005	BC 2.30	542 x 407 x 140	556 x 421 x 168
UK FL 403006*	B 1.40	530 x 328 x 80	552 x 339 x 88
UK FL 403211**	BC 2.30	510 x 365 x 175	538 x 380 x 190
UK FL 473005	B 1.40	560 x 360 x 100	566 x 366 x 112
UK FL 503215**	BC 2.30	600 x 390 x 200	615 x 395 x 228
UK FL 504010**	BC 2.30	620 x 465 x 160	635 x 480 x 188
UK FL 512305	B 1.40	562 x 300 x 82	592 x 309 x 88
UK FL 513005	B 1.40	562 x 375 x 82	592 x 384 x 88
UK SW 1207**	B 1.30	202 x 152 x 104	208 x 158 x 117
UK SW 1313**	C 1.30	195 x 195 x 90	200 x 200 x 104
SN 161003	E 1.20	235 x 186 x 75	242 x 172 x 78
UK SW 1717**	B 1.30	230 x 220 x 218	236 x 226 x 230
UK SW 191560**	B 1.30	305 x 250 x 175	311 x 256 x 187
UK SW 2010**	C 1.30	278 x 176 x 176	287 x 185 x 190
UK SW 2011**	C 1.30	293 x 193 x 136	300 x 200 x 150
UK SW 2415**	C 1.30	315 x 225 x 178	324 x 234 x 194
UK SW 2518**	C 1.30	332 x 295 x 234	340 x 300 x 246
UK SW 2525**	C 1.30	326 x 326 x 202	334 x 334 x 218
UK SW 2818**	C 1.30	356 x 239 x 240	364 x 247 x 256
UK SW 2823**	BC 2.30	408 x 320 x 260	422 x 334 x 288
UK SW 2927**	BC 2.30	458 x 425 x 370	472 x 439 x 398
SN 300760	B 1.40	146 x 136 x 368	152 x 142 x 380
UK SW 3020**	BC 2.20	389 x 289 x 242	400 x 300 x 270
UK SW 3030**	BC 2.30	372 x 372 x 310	387 x 387 x 338
UK SW 3433**	BC 2.30	492 x 472 x 302	506 x 486 x 330
UK SW 4030**	BC 2.30	489 x 389 x 302	500 x 400 x 330
UK SW 454490**	BC 2.40	583 x 520 x 200	597 x 534 x 228
UK SW 4544180**	BC 2.40	583 x 520 x 570	597 x 534 x 598
UK SW 4646**	BC 2.30	596 x 554 x 300	610 x 568 x 328
UK SW 5030**	BC 2.40	630 x 390 x 455	644 x 404 x 483
UK SW 5040**	BC 2.40	634 x 490 x 530	648 x 504 x 558
UK SW 5050**	BC 2.50	634 x 590 x 530	648 x 604 x 558

Module dimensions for pallets!

Module dimensions for pallets!

Module dimensions for pallets!

Module dimensions for pallets!

Module dimensions for pallets!

\*Fefco 0427, \*\*Fefco 0201, Some „UK SW“ - boxes have extra grooves for different heights.

You can send us a non-binding order using the following questionnaire.  
Or go to [www.emba-protec.de](http://www.emba-protec.de) and do it online!

Company	<input type="text"/>	Contact	<input type="text"/>
Street	<input type="text"/>	Department/Position	<input type="text"/>
ZIP/Postc.	<input type="text"/>	Telephone	<input type="text"/>
Town	<input type="text"/>	Telefax	<input type="text"/>
Branch	<input type="text"/>	E-Mail	<input type="text"/>

## What do you want to pack?

Product name (working title)

Product type

Weight in kgs

Min.  Max.

Min.size  x  x  mm

Max. size  x  x  L/W/H

If ordering more than one product, please  
use the "Max" fields.

## How many items do you want to pack?

per day  per week  per month  per year

How long is the present packaging time per unit?  labour units in minutes

## What kind of packaging do you use at the moment?

## What is your usual shipping method?

☐ Individually packaged ☐ Bulk good on pallet ☐ both

## What are your aims?

- |   |   |
|---|---|
| <input type="checkbox"/> Improved protection                | <input type="checkbox"/> Reduced volume                   |
| <input type="checkbox"/> Reduced diversity                  | <input type="checkbox"/> Increased reusability            |
| <input type="checkbox"/> Reduced packaging time             | <input type="checkbox"/> Environment-friendlier packaging |
| <input type="checkbox"/> Improved appearance/design         | <input type="checkbox"/> Reduced costs                    |
| <input type="checkbox"/> Savings in extra packing materials | <input type="checkbox"/>                                  |

## Do you want a drop test?

- ☐ no    ☐ yes    which

## Which interests you more?

- ☐ Individual solution    ☐ Using standard sizes wherever possible

## Priority

- ☐ 1 week    ☐ 2 weeks    ☐ 4 weeks    ☐ Desired deadline



This image shows a full page of blank graph paper. The grid consists of thin, light gray horizontal and vertical lines that intersect to form small squares across the entire surface. There are no margins, text, or other markings on the paper.



# Doc Emba

## The explaining engineer

**Doc Emba guides you through  
the exciting world of packaging  
of Emba-Protec.**

**Stay curious !  
We will keep you up to date !**

### **Our digital channels:**

For general messages :  
For suggestions and requests  
for improvements :  
For your orders:  
For general information  
about Emba-Protec

[info@emba-protec.de](mailto:info@emba-protec.de)

[geschaeftsleitung@emba-protec.de](mailto:geschaeftsleitung@emba-protec.de)  
[order@emba-protec.de](mailto:order@emba-protec.de)

[www.emba-protec.de](http://www.emba-protec.de)

